



**PRINCE WILLIAM**  
COUNTY

# COVID-19 Operational Update

Brian Misner  
Emergency Management Coordinator

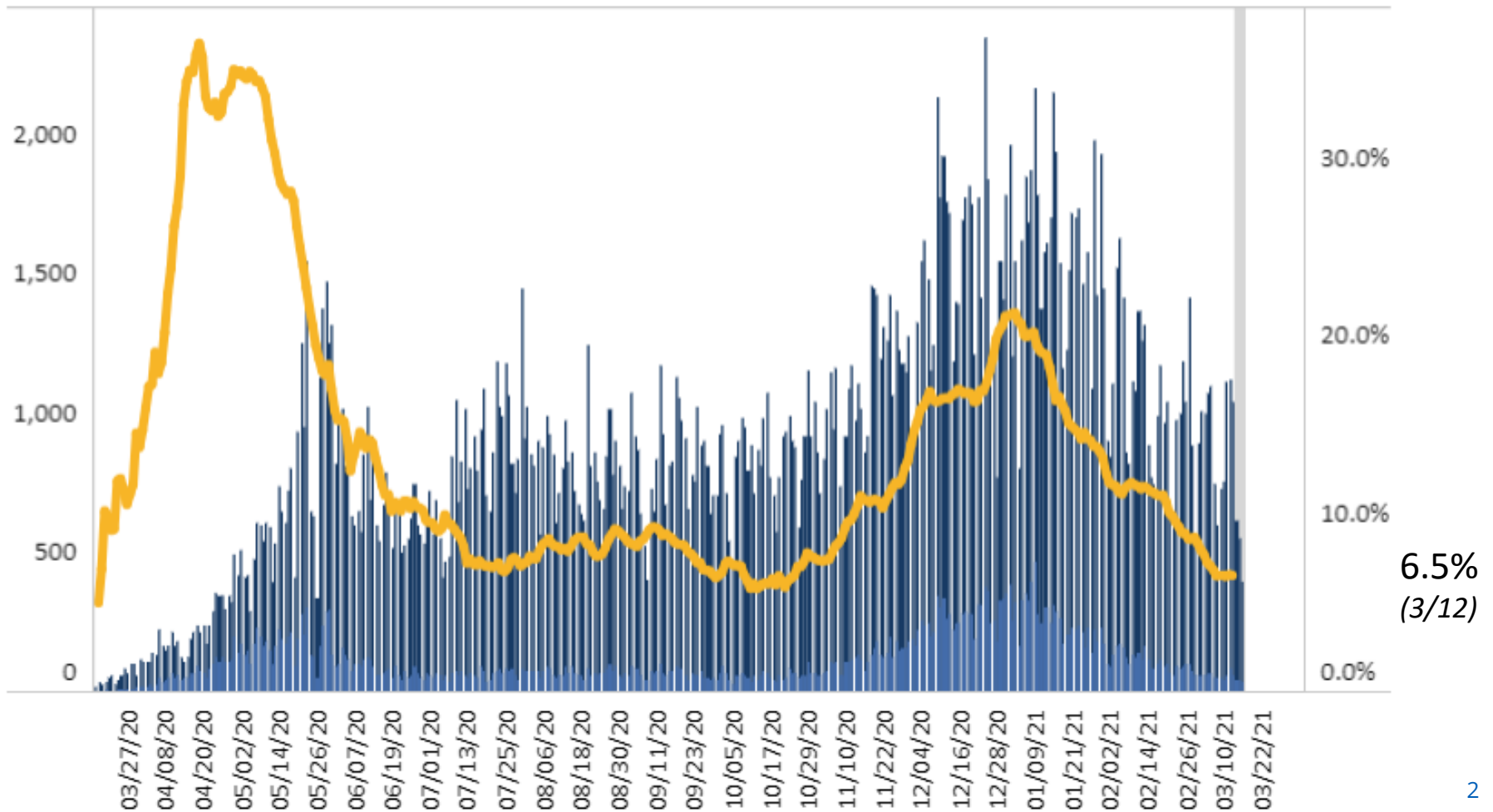
March 16, 2021

# Number of Positive Tests vs. Tests Conducted - Cumulative



Number of Testing Encounters, Number of Positive Testing Encounters, and Percent Positivity\*\* by Lab Report Date - Prince William, PCR Only

- Percent Positivity, 7-Day Moving Average
- Positive Testing Encounters
- Number of Testing Encounters

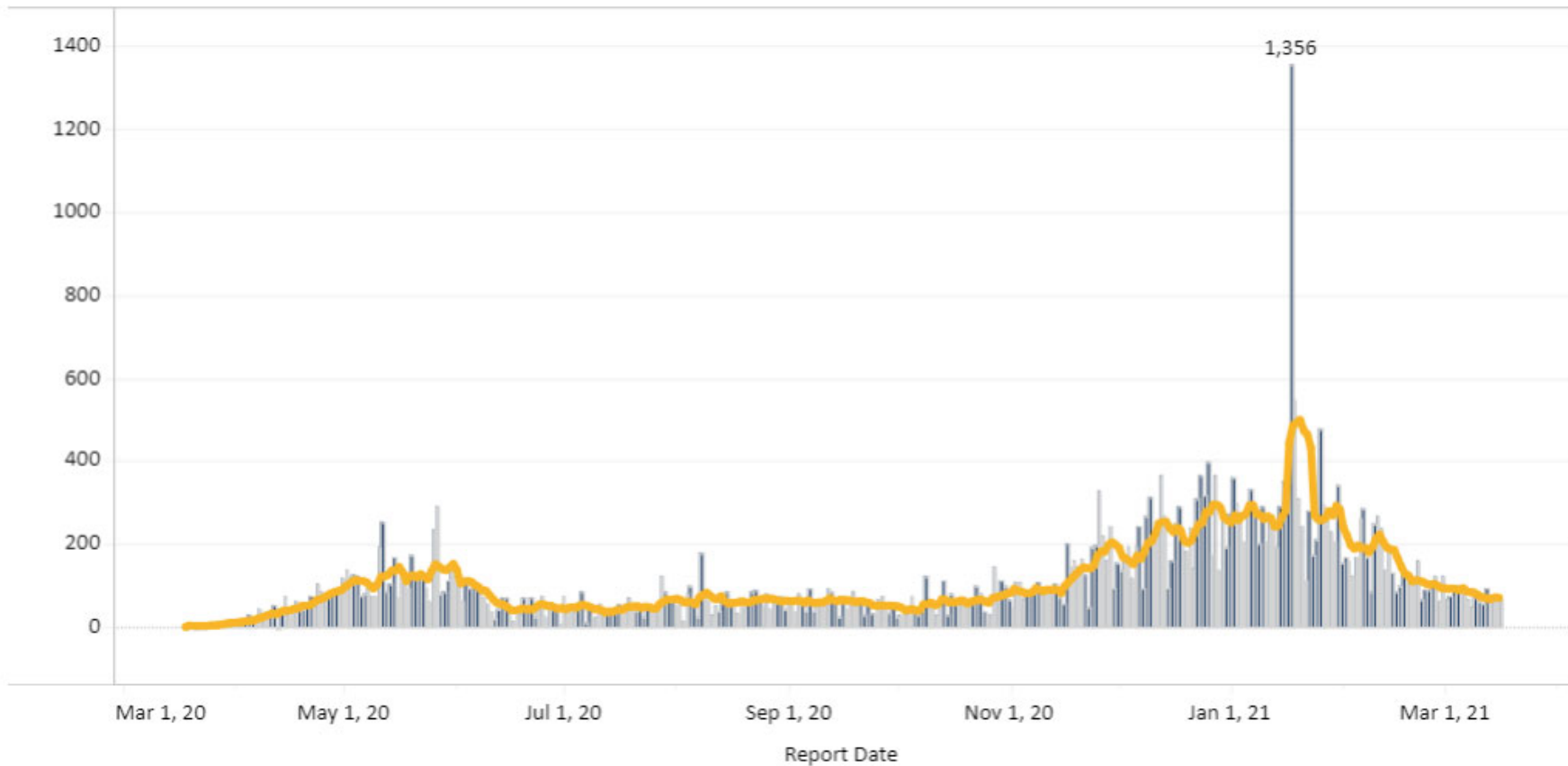


# COVID-19 Cases in PWHD



Number of New Cases Reported <sup>^</sup>	7-Day Average Number of Daily New Cases Reported	7-Day Average Number of New Daily Cases Reported, Rate per 100,000 Population	Total Number of New Cases per 100,000 Population within last 14 days
<b>64</b>	<b>70</b>	<b>15.0</b>	<b>229.7</b>

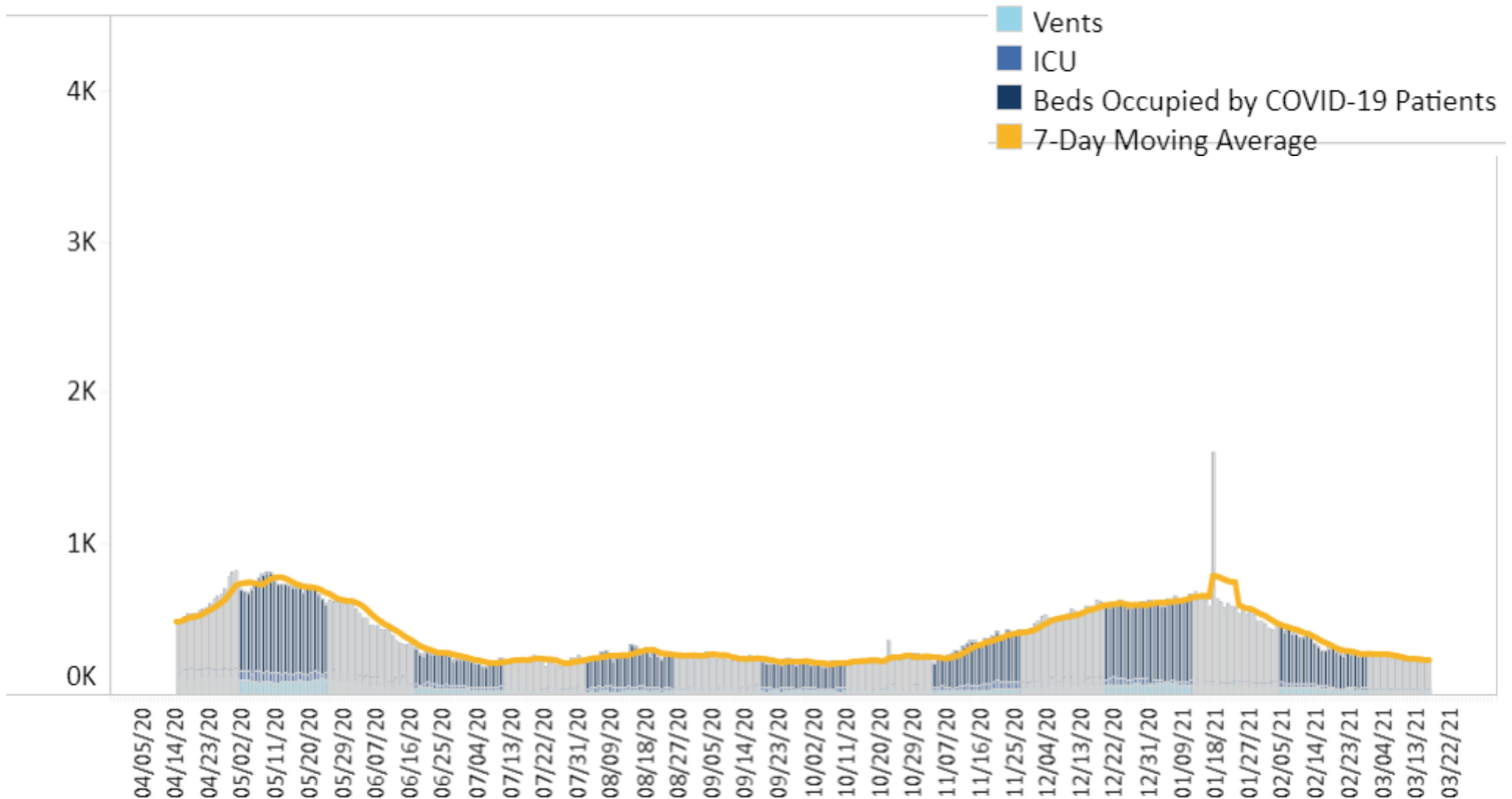
Report Date Daily Cases Counts - Prince William



# COVID-19 Hospitalizations in NOVA



Number of Patients Hospitalized with a Positive or Pending COVID-19 Test - Northern Region



# COVID-19 Hospitalizations in PWHD



Number of New Hospitalizations Reported<sup>^</sup>

**16**

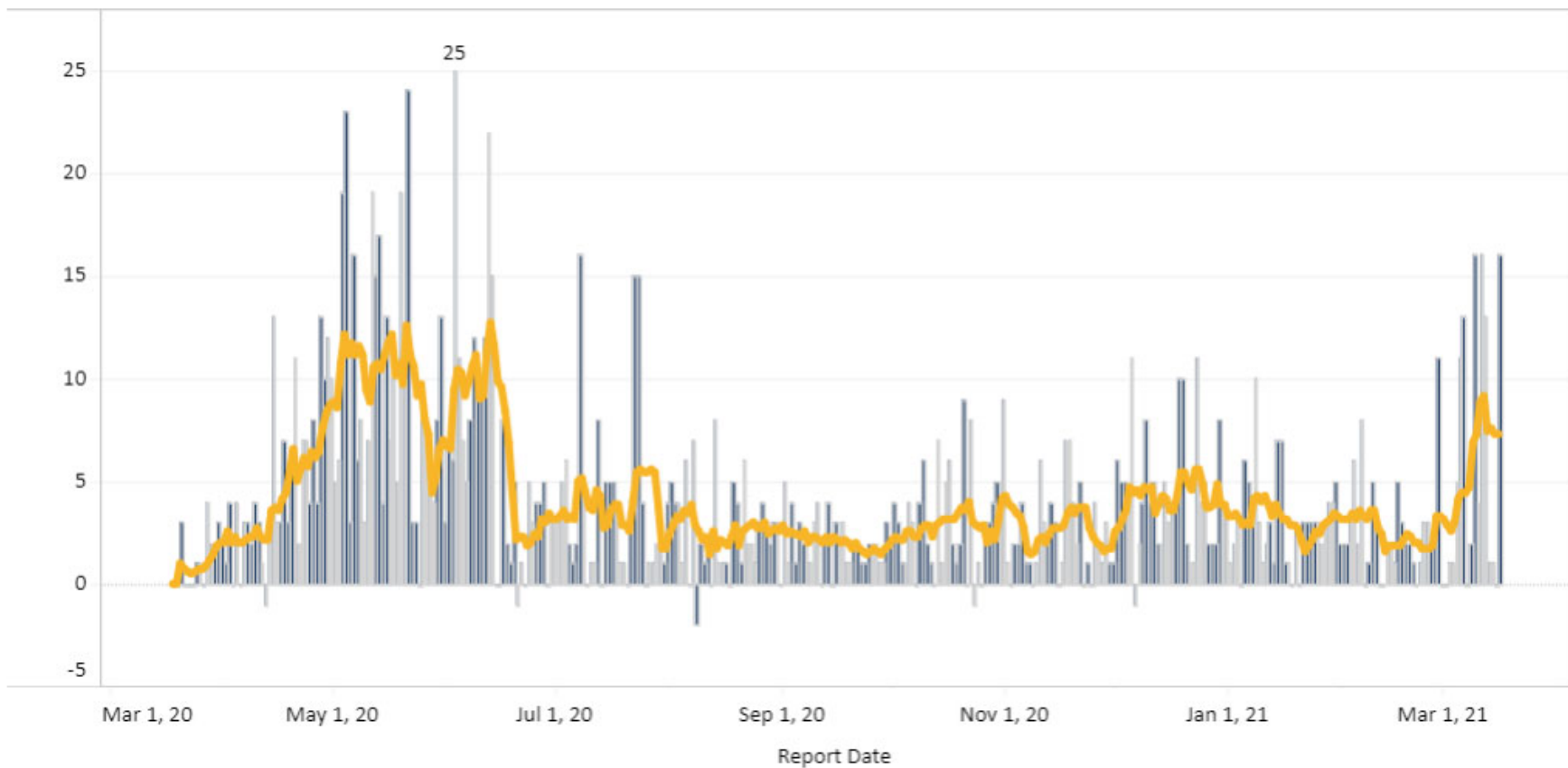
7-Day Average Number of Daily New Hospitalizations Reported

**7**

7-Day Average Number of New Daily Hospitalizations Reported, Rate per 100,000 Population

**1.6**

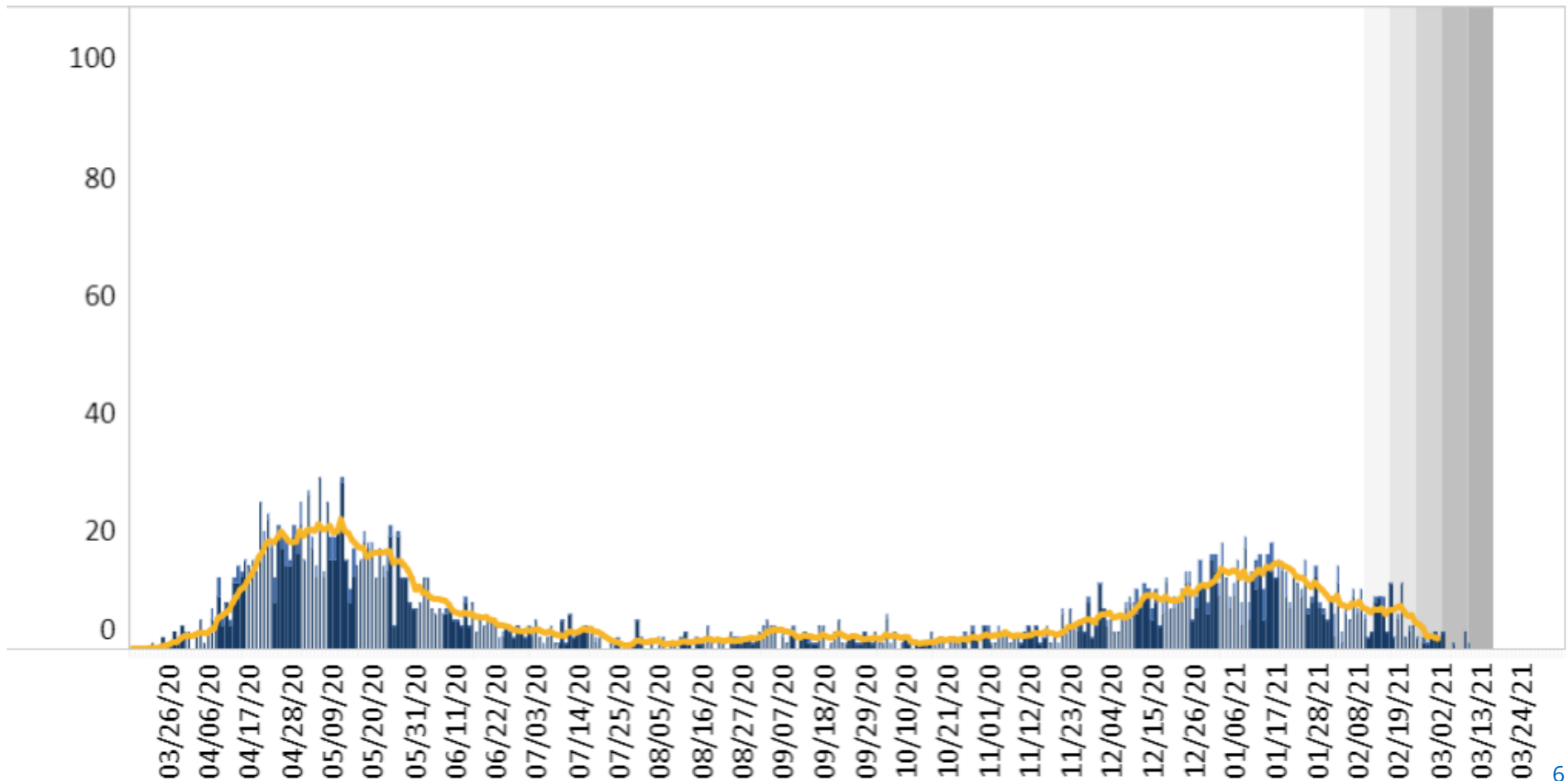
Report Date Daily Hospitalizations Counts - Prince William



# COVID-19 Deaths in NOVA

## Number of Deaths by Date of Death - Northern Region

Number of deaths by the day of death as written on the death certificate



# COVID-19 Deaths in PWHD



Number of New Deaths Reported^

**1**

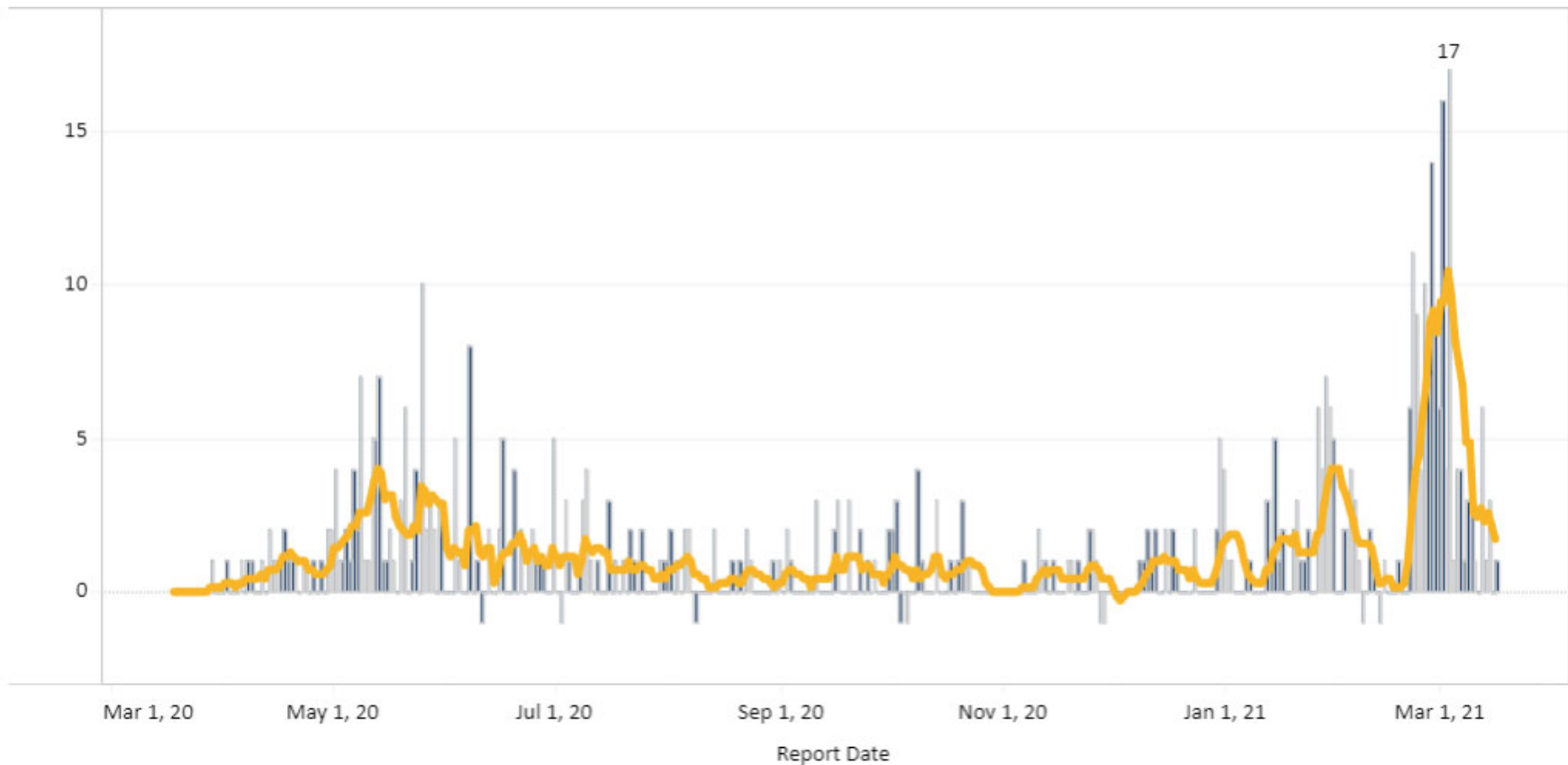
7-Day Average Number of Daily New Deaths Reported

**2**

7-Day Average Number of New Daily Deaths Reported, Rate per 100,000 Population

**0.4**

Report Date Daily Deaths Counts - Prince William



# COVID-19 Testing Update



- We have reduced our mobile test sites from 7 to 6 locations per week.
- Still at the same capacity of 200 tests/day.
- Each of the designated mobile sites are being visited once per week.
- Reasons for change:
  - 70 percent decrease in demand over the last month
  - Weather impacts on staff and logistics
- We are closely monitoring the situation and plan to adjust accordingly.

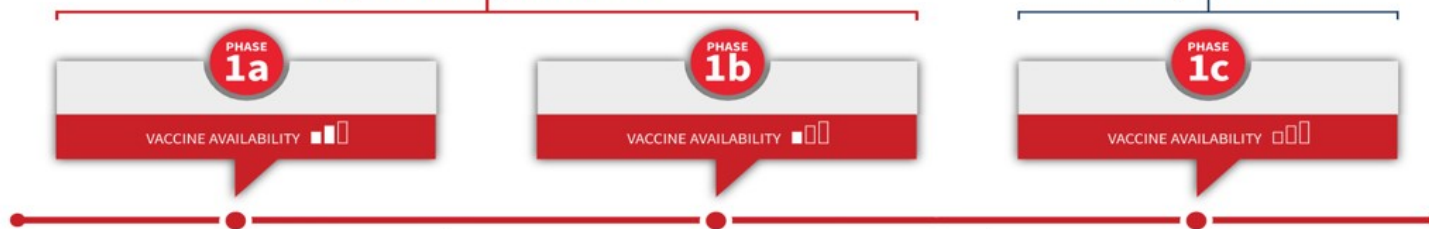


# Vaccine Distribution Phases

## Prince William Health District COVID-19 Vaccination Status | Last Updated 3/8/2021

Virginia is currently in these phases

Future phase to come



Phase 1a		Phase 1b Frontline Essential Workers		Phase 1c Other Essential Workers			
All Categories of Healthcare Workers and Long-Term Care Facilities	<b>In Progress</b>	1. Police, Fire, and Hazmat Workers	<b>In-Progress</b>	1. Energy	<i>Not Yet Eligible</i>		
		2. Corrections and homeless shelter workers	<b>In-Progress</b>	2. Water, wastewater, and waste removal workers	<i>Not Yet Eligible</i>		
		3. Childcare/PreK-12 Teachers/Staff	<b>In-Progress</b>	3. Housing Construction	<i>Not Yet Eligible</i>		
		4. Food and Agriculture (including Veterinarians)	<b>In-Progress</b>	4. Food Service	<i>Not Yet Eligible</i>		
		5. Manufacturing	<b>In-Progress</b>	5. Transportation and Logistics	<i>Not Yet Eligible</i>		
		6. Grocery store workers	<b>In-Progress</b>	6. Institutions of Higher Education Faculty / Staff	<i>Not Yet Eligible</i>		
		7. Public transit workers	<i>Not Yet Eligible</i>	7. Finance	<i>Not Yet Eligible</i>		
		8. Mail carriers (USPS and private)	<i>Not Yet Eligible</i>	8. Information Technology & Communication	<i>Not Yet Eligible</i>		
		9. Officials needed to maintain continuity of government	<i>Not Yet Eligible</i>	9. Media	<i>Not Yet Eligible</i>		
		10. Clergy/Faith Leaders	<i>Not Yet Eligible</i>	10. Legal Services	<i>Not Yet Eligible</i>		
		11. Janitorial/Cleaning Staff	<i>Not Yet Eligible</i>	11. Public Safety (Engineers)	<i>Not Yet Eligible</i>		
		<b>AND</b>		12. Other Public Health Workers	<i>Not Yet Eligible</i>		
		Persons Aged 65 years and Older	<b>In-Progress</b>				
People Living in Correctional Facilities, Homeless Shelters and Migrant Labor Camps.	<b>In-Progress</b>						
People aged 16 - 64 years with a <a href="#">High-Risk Medical Condition or Disability</a>	<b>In-Progress</b>						

# Statewide Vaccine Dashboard

## By Locality of Residence – Rates per 100,000



Total Doses Administered	People Vaccinated with at Least One Dose*	People Fully Vaccinated	% of the Population Vaccinated with at Least One Dose
<b>2,775,063</b>	<b>1,820,261</b>	<b>1,025,332</b>	<b>21.3%</b>

\* Includes people vaccinated with 1 or 2 doses of a 2-dose vaccine, including doses administered through the Federal CDC Pharmacy Partnership for Long Term Care Facilities.

### People Vaccinated by Locality of Residence and Vaccination Status - Rate per 100,000 Population

At Least One Dose Rate per 100,000 Population

- 9005 - 11433
- 11434 - 14517
- 14518 - 18433
- 18434 - 23405
- 23406 - 29718
- 29719 - 37733

**PW Health District – Rate per 100,000**

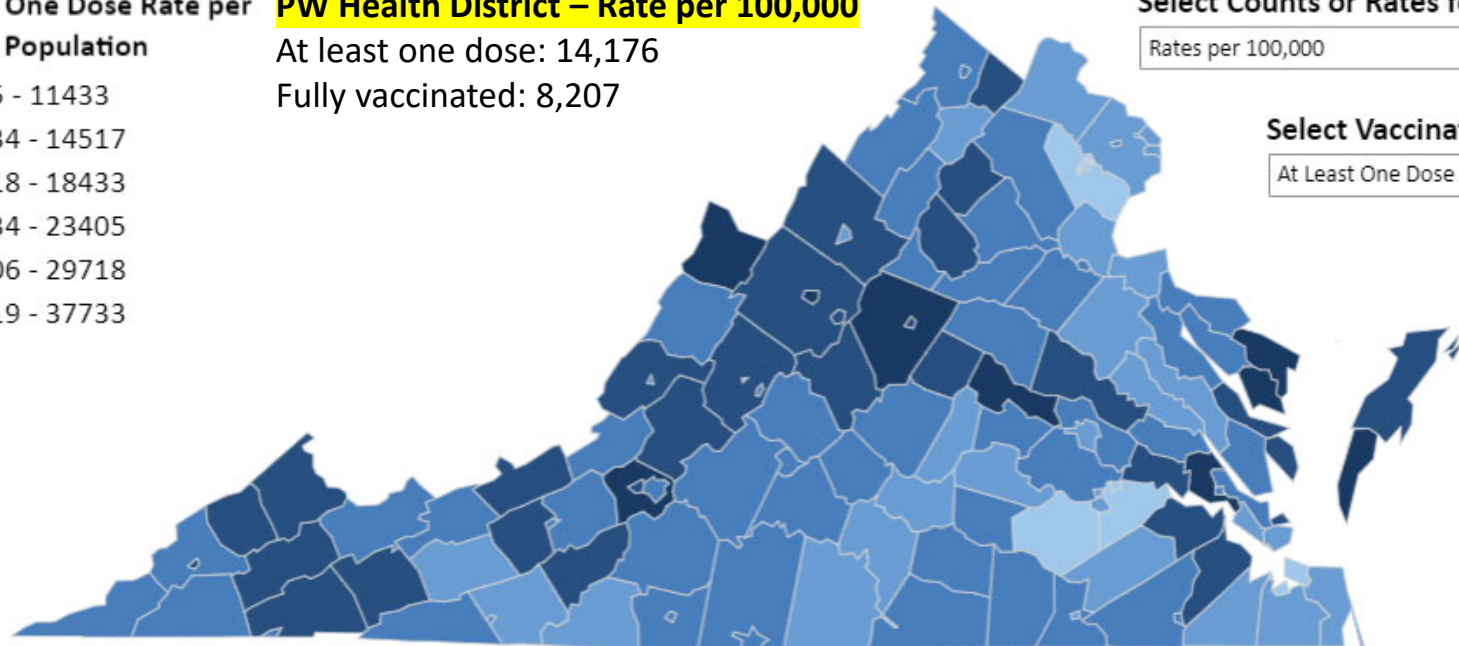
At least one dose: 14,176  
Fully vaccinated: 8,207

Select Counts or Rates for the Map

Rates per 100,000 ▼

Select Vaccination Status

At Least One Dose ▼

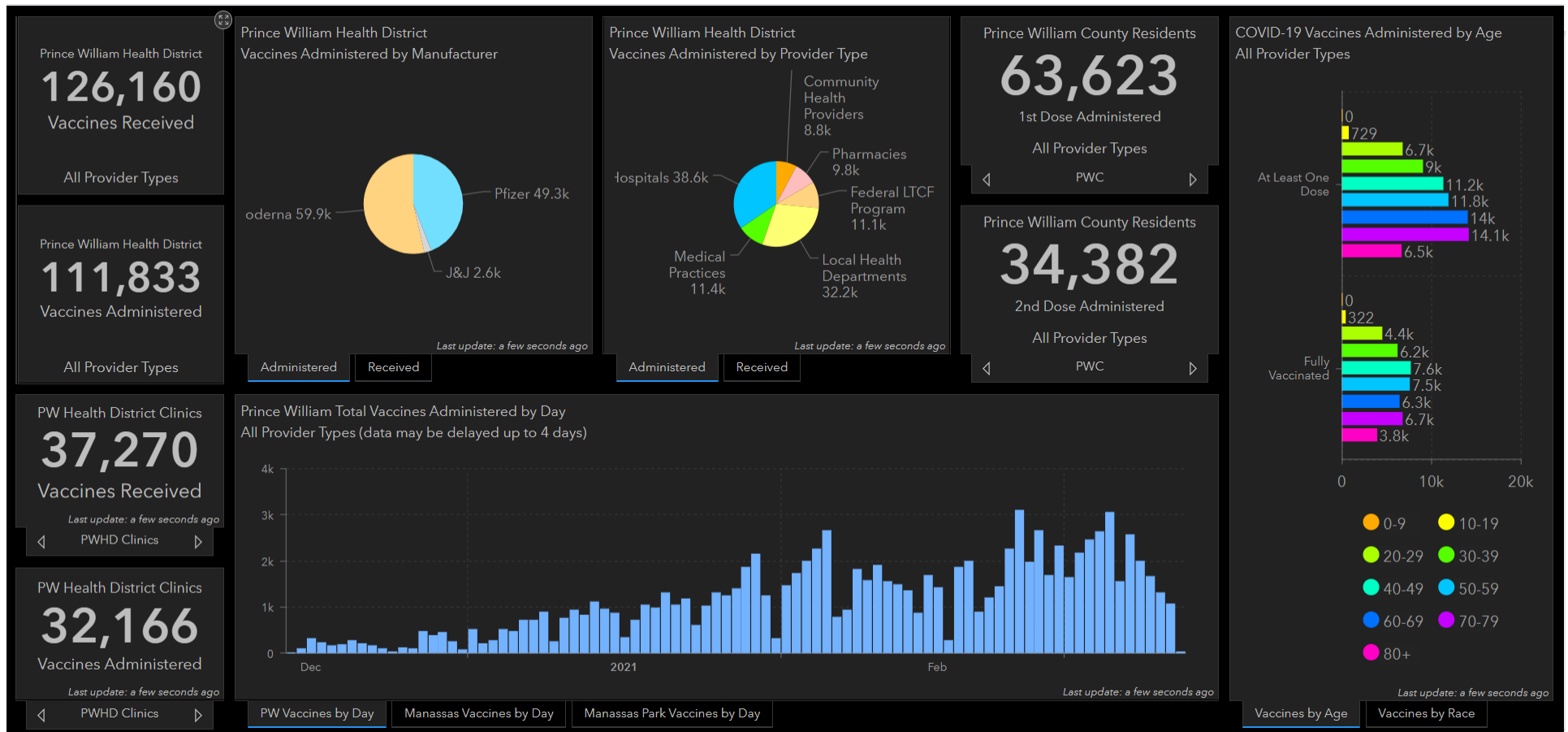


People Not Mapped: 248,029

# PWHD Vaccination Dashboard



- <https://pwcgov.maps.arcgis.com/apps/opstdashboard/index.html#/e39cdc00a66243d896b97a4cbb174d5d>



# Vaccination Clinics Planned for 3/15 – 3/20

- The following vaccination clinics will be in operation this week, Monday through Saturday, all from the pre-registration system.
  - PWHD-Run clinics (Total 5,000):

Date	Location	Hours	Vaccine and Dose	Doses Available
<b>Mon 3/15</b>	Gander Mountain	9 AM – 4 PM	Moderna 1 <sup>st</sup> Dose	1200
<b>Tue 3/16</b>	Beacon Hall	9 AM – 4 PM	Moderna 1 <sup>st</sup> Dose	550
<b>Thu 3/18</b>	Gander Mountain	1 PM – 7 PM	Moderna 2 <sup>nd</sup> Dose	1200
<b>Fri 3/19</b>	Beacon Hall	9 AM – 4 PM	Moderna 2 <sup>nd</sup> Dose	550
<b>Fri 3/19</b>	Manassas Mall	9 AM – 4 PM	Moderna 2 <sup>nd</sup> Dose	750
<b>Sat 3/20</b>	Manassas Mall	9 AM – 4 PM	Moderna 2 <sup>nd</sup> Dose	750

- Safeway at Veteran's Memorial Park: 1,150 Pfizer or J&J
  - 550 first doses and 600 second doses

# Community Vaccination Center coming to PWC

- The Commonwealth will transition the **Gander Mountain** clinic site into a large-scale **Community Vaccination Center (CVC)** over the weekend.
  - Will begin operating as a State-managed CVC next week.
  - Initial capacity of **3,000 doses per day** – constrained by vaccine supply.
  - Once vaccine supply increases, the site is expected to increase to **6,000 doses per day**.
  - Will be scheduling from the State preregistration system, so register today!
- Vaccine allocation comes directly from the State; does not affect the Health District's allocation.
  - Will enable PWHC to increase capacity at Manassas Mall and begin "mobile" events with current resources.

# Pre-Registration System and Call Center Updates

- **Local Call Center:**

- Still handling testing questions.
- Booking appointments for 2<sup>nd</sup> doses for PWHD and assisting those who received automated calls or texts to book their first doses if they don't have access to the internet.
- Assisting booking appointments for Safeway clinics.
- Implementing a plan to reduce library staffing of the call center over the next 3 weeks so that libraries can resume normal service delivery by early April.

- **Waitlist / Pre-Registration System:**

- **Now scheduling all appointments from State Pre-Registration System data.**
- The State pre-registration system does not yet give a "place in line."

# Community Outreach and Engagement

- **Goal:**

- Utilizing community partners and community vulnerability data to ensure everyone who wants a vaccine gets one.

- **Three Focus Areas:**

- Addressing vaccine hesitancy
- Ensuring everyone who wants a vaccine signs up on state waitlist
- Determine mobile vaccine clinic process and opportunities for community leaders
- Customize outreach and engagement strategy based on individual community and population needs and concerns:
  - Identify all critical populations and best ways to reach them
  - Leverage existing relationships, including community leaders and BOCS

# Ongoing Outreach Campaign



## Help Stop COVID-19



**WEAR A MASK  
SOCIAL DISTANCE  
WASH YOUR HANDS  
GET THE VACCINE WHEN IT IS YOUR TURN**  
TO KEEP YOU AND YOUR LOVED ONES SAFE





# Questions

