



PRINCE WILLIAM
COUNTY

COVID-19 Operational Update

Brian Misner
Emergency Management Coordinator

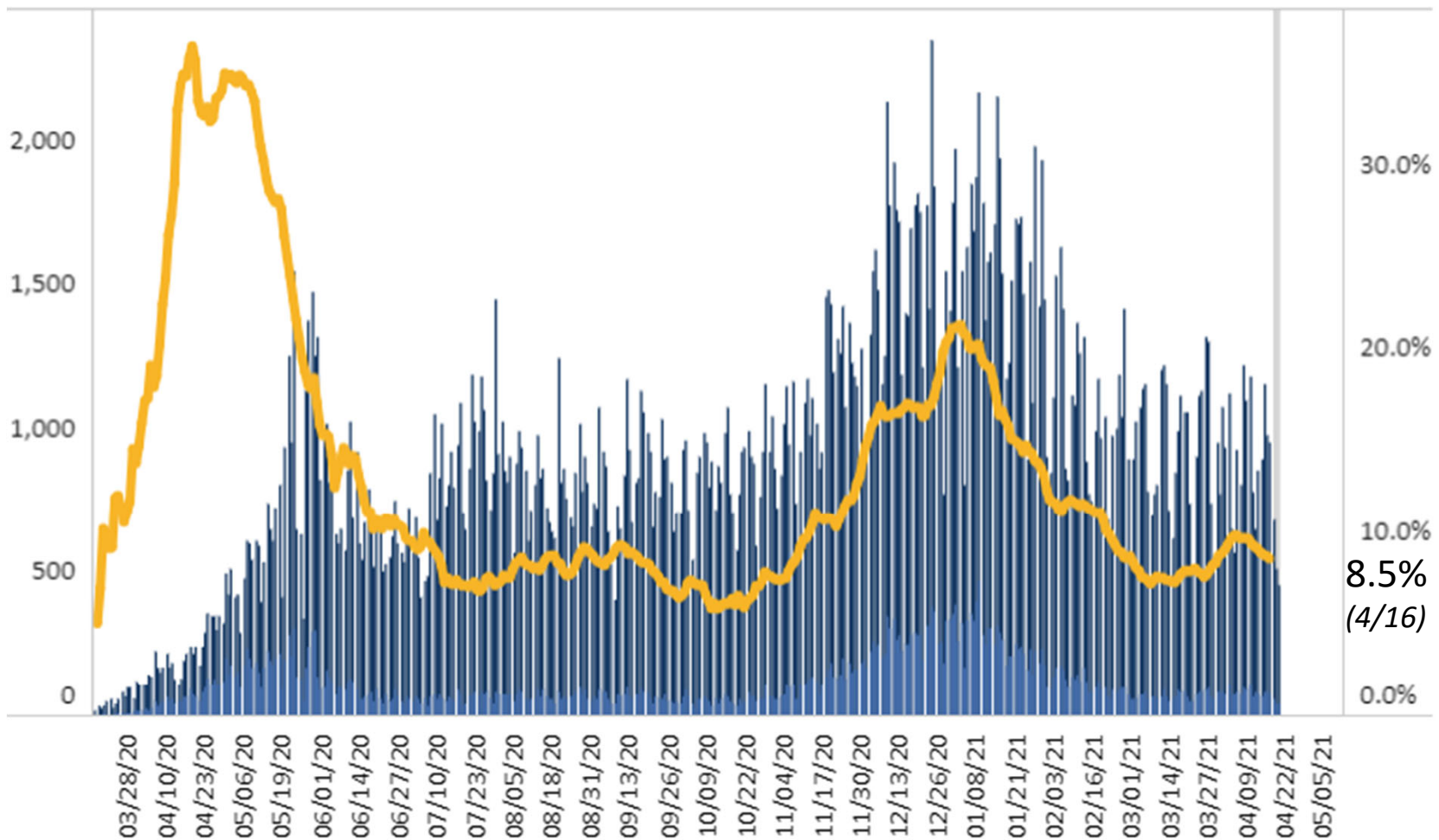
April 20, 2021

Number of Positive Tests vs. Tests Conducted - Cumulative



Number of Testing Encounters, Number of Positive Testing Encounters, and Percent Positivity** by Lab Report Date - Prince William, PCR Only

- Percent Positivity, 7-Day Moving Average
- Positive Testing Encounters
- Number of Testing Encounters



COVID-19 Cases in PWHD



Number of New Cases Reported[^]

67

7-Day Average Number of Daily New Cases Reported

84

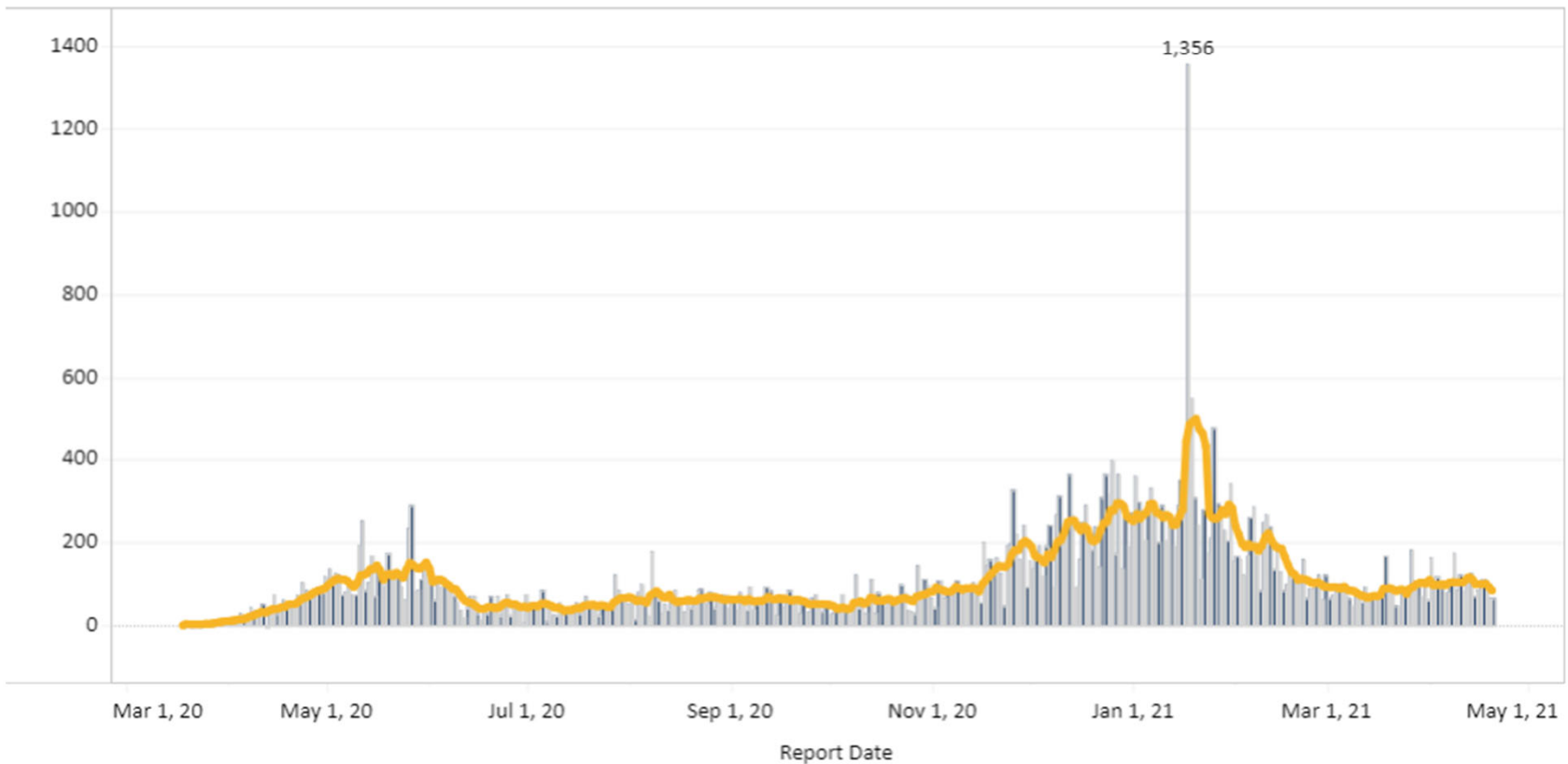
7-Day Average Number of New Daily Cases Reported, Rate per 100,000 Population

18.0

Total Number of New Cases per 100,000 Population within last 14 days

300.2

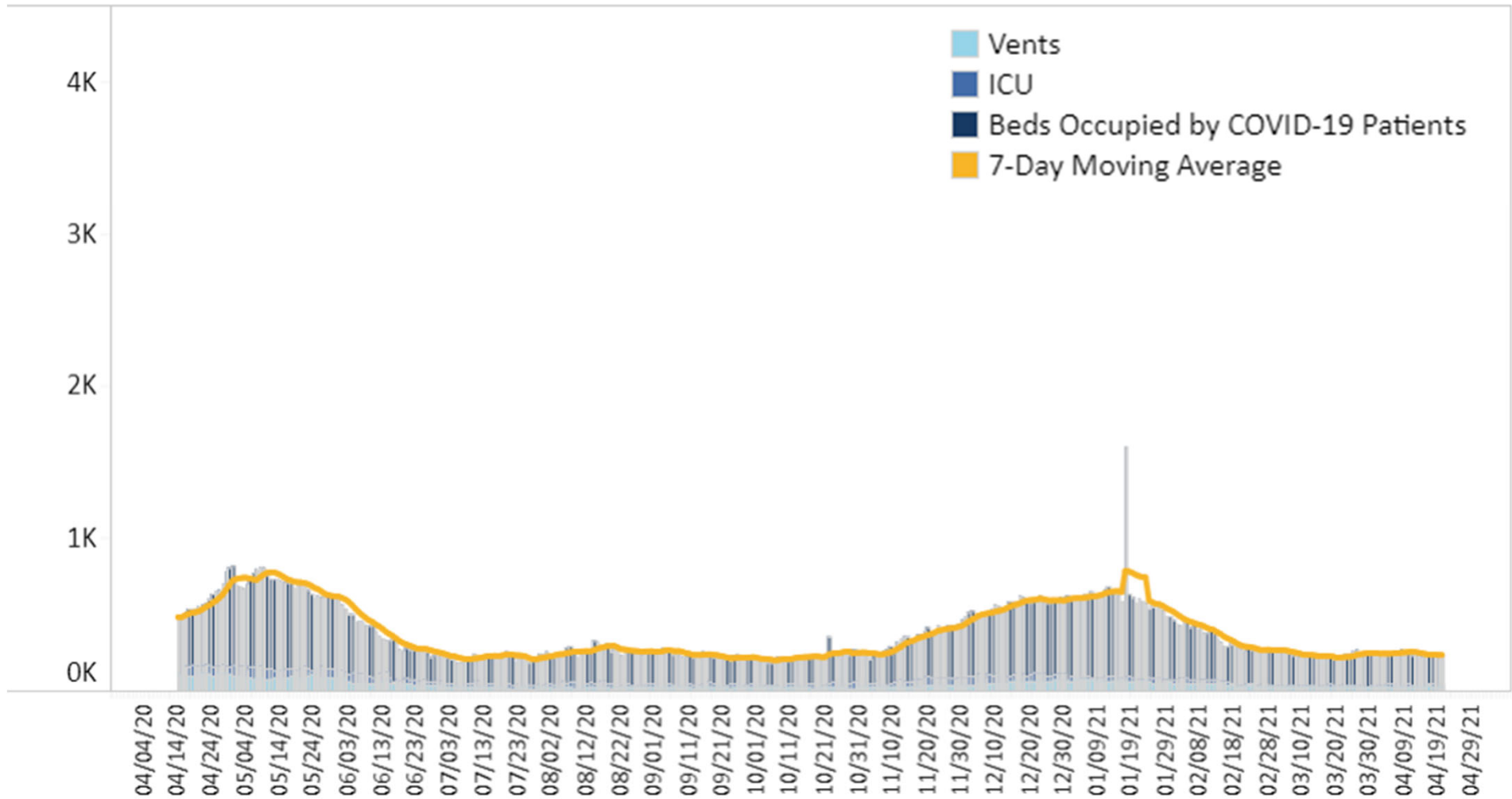
Report Date Daily Cases Counts - Prince William



COVID-19 Hospitalizations in NOVA



Number of Patients Hospitalized with a Positive or Pending COVID-19 Test - Northern Region



COVID-19 Hospitalizations in PWHD



Number of New Hospitalizations Reported^

1

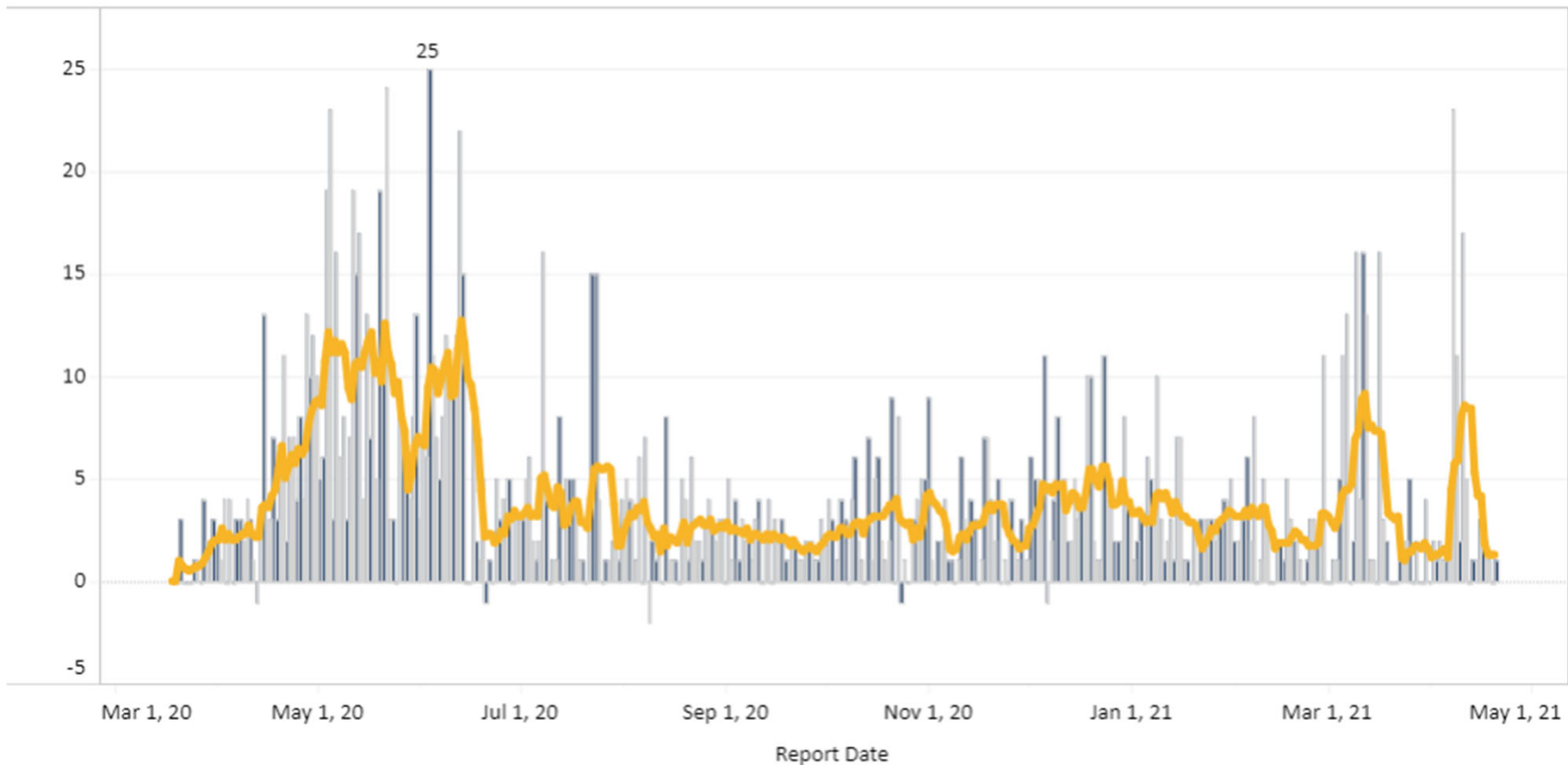
7-Day Average Number of Daily New Hospitalizations Reported

1

7-Day Average Number of New Daily Hospitalizations Reported, Rate per 100,000 Population

0.3

Report Date Daily Hospitalizations Counts - Prince William



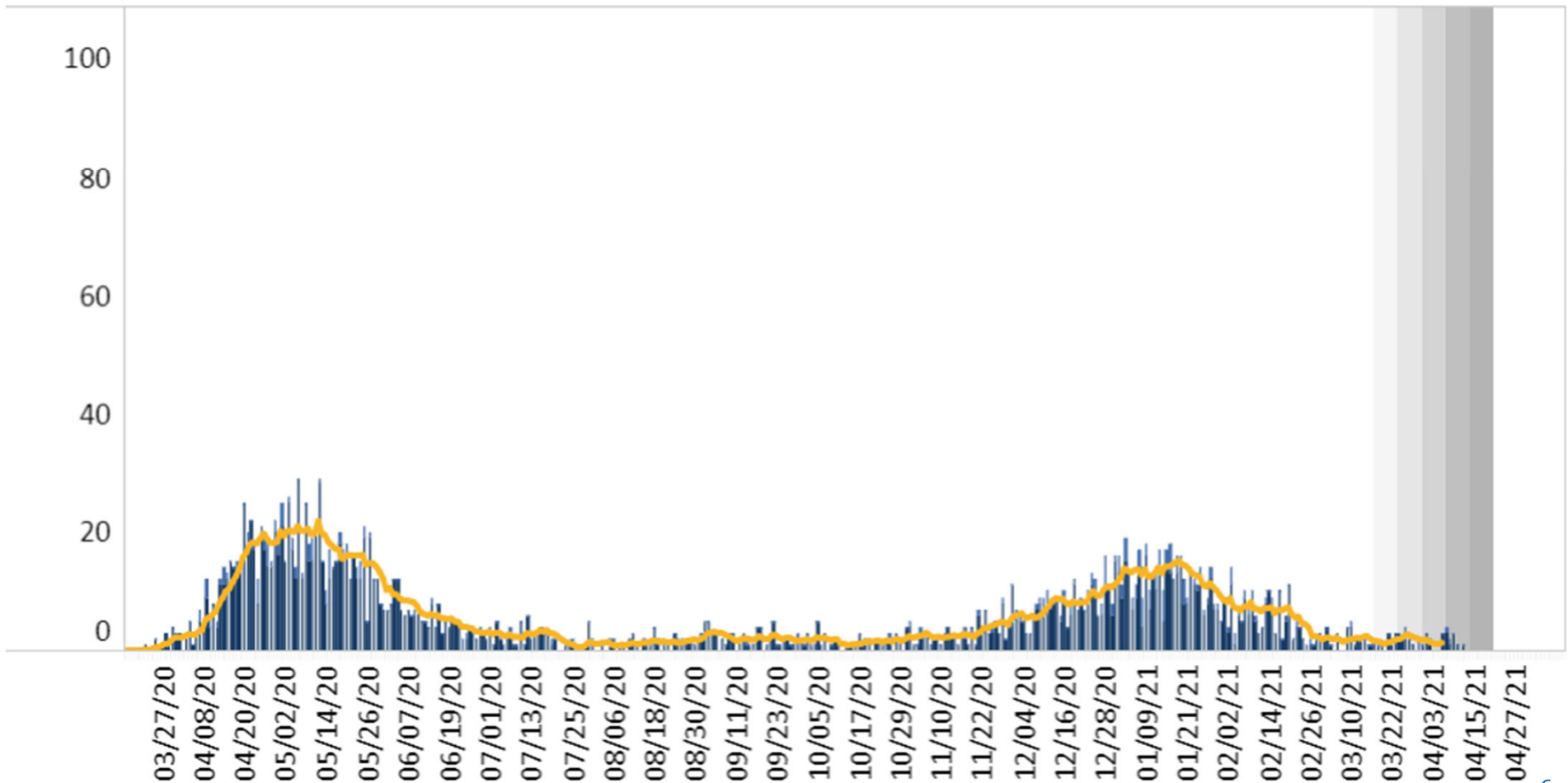
COVID-19 Deaths in NOVA



Number of Deaths by Date of Death - Northern Region

Number of deaths by the day of death as written on the death certificate

- Probable
- Confirmed
- 7-Day Moving Average



COVID-19 Deaths in PWHD



Number of New Deaths Reported^

2

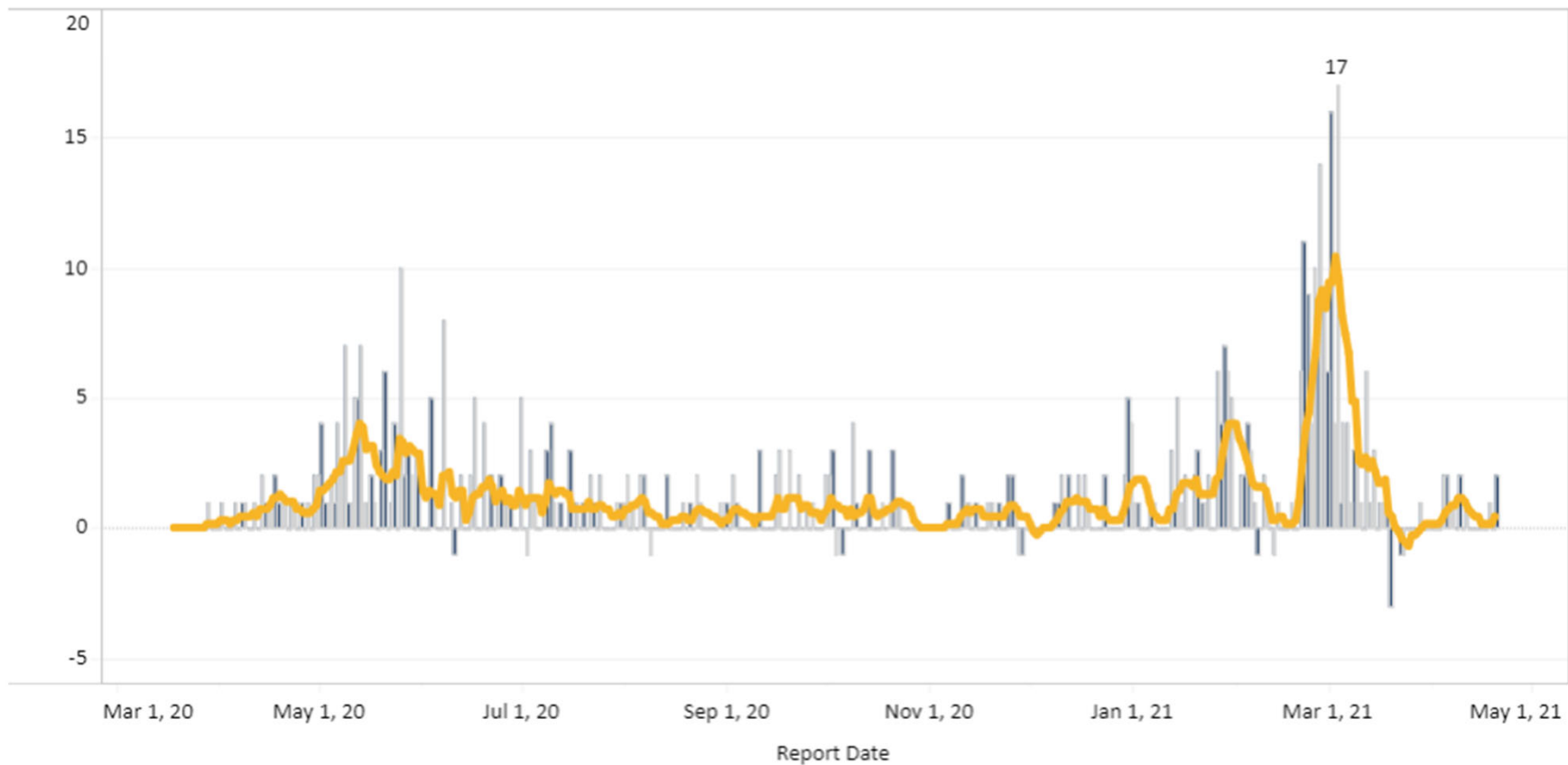
7-Day Average Number of Daily New Deaths Reported

0

7-Day Average Number of New Daily Deaths Reported, Rate per 100,000 Population

0.1

Report Date Daily Deaths Counts - Prince William



COVID-19 Testing Update



- Offering four locations per week; rotating across six locations every two weeks.
- Still offering the same capacity of 200 tests/day.
- Reason for change:
 - On average, between 100-150 tests **per week** in the last two months.
- We are closely monitoring the situation and will make additional adjustments as needed.

Vaccine Distribution Phase 2



<http://vaccinate.virginia.gov> is the main source for appointments

 **Online**



VaccineFinder is a website where you can search for vaccination providers, operated by the U.S. Centers for Disease Control and Prevention (CDC).

 **By phone**

(877) VAX-IN-VA
(877) 829-4682



Video chat for American Sign Language

 **High risk?**

Are you at high risk from COVID-19?

If you are eligible in Phase 1a, 1b, or 1c and you don't find an appointment through [VaccineFinder](#) that meets your needs, you may pre-register for a priority appointment and your local health district will contact you within a week to schedule your appointment.

Pre-register Online



(877) VAX-IN-VA
(877) 829-4682

Phase 1 Eligibility Criteria:

Phase 1 includes anyone who lives in Virginia and:

- Is age 65 or older
- Is a [healthcare worker](#), [frontline essential worker](#), or [other essential worker](#)
- Has a [medical condition or disability](#) that puts them at high risk or severe illness if they get COVID-19
- Lives in a long-term care facility, correctional facility, homeless shelter, or migrant labor camp

Vaccination in VA 

Tips for using VaccineFinder:

Enter your ZIP code to see vaccination providers in your area.

These may include community vaccination or health centers, local health department clinics, pharmacies, hospitals, or physician offices.

Schedule an appointment or pre-register.

Follow the instructions from each provider to find available vaccination appointments using that provider's scheduling system. Some local health districts may require you to pre-register for an appointment rather than letting you schedule one immediately.

Make only one appointment.

Only schedule one appointment, even if the vaccine requires two doses. For the Pfizer-BioNTech or Moderna vaccines, the provider who gives you your first dose will schedule an appointment in the same area for you to receive your second dose. The Johnson & Johnson vaccine only requires one dose.

How we can help:

The call center can help you schedule an appointment if one is available, pre-register for an appointment if required, answer questions about vaccination and other COVID-19 topics, and more.

Available every day

The call center is available seven days a week, from 8 a.m. to 8 p.m.

Help in your language

Assistance is available in English, Spanish, and more than 100 additional languages. Video assistance in American Sign Language is available by clicking the "ASL NOW" button above.

Statewide Vaccine Dashboard By Locality of Residence



Total Doses Administered - 5,410,736

**People Vaccinated
with at Least One
Dose***

3,442,232

**% of the Population
Vaccinated with at
Least One Dose**

40.3%

**People Fully
Vaccinated^**

2,166,158

**% of the Population
Fully Vaccinated**

25.4%

* People vaccinated with one dose of a two-dose vaccine and one dose of a single dose vaccine, including doses administered through the Federal CDC Pharmacy Partnership.

^ People vaccinated with two doses of a two-dose vaccine and one dose of a single dose vaccine, including doses administered through the Federal CDC Pharmacy Partnership.

People Vaccinated by Locality of Residence and Vaccination Status

At Least One Dose Count

- 963 - 2246
- 2247 - 5241
- 5242 - 12230
- 12231 - 28533
- 28534 - 66572
- 66573 - 155320
- 155321+

PWC – Counts

At least one dose: 172,005

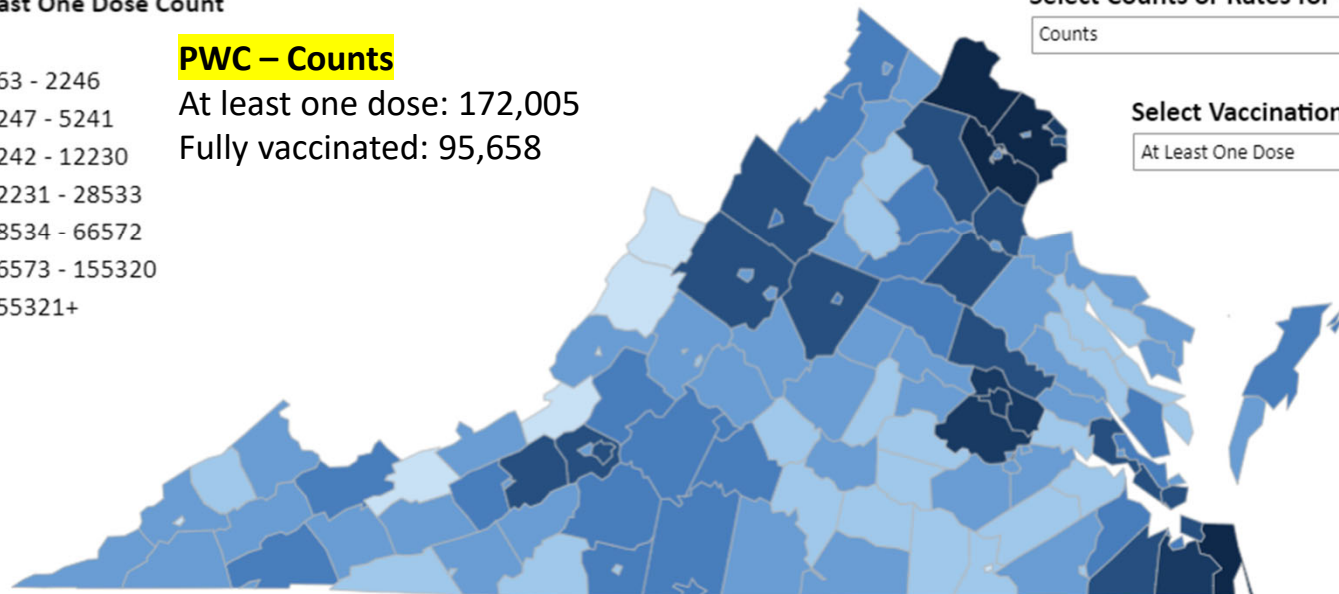
Fully vaccinated: 95,658

Select Counts or Rates for the Map

Counts ▼

Select Vaccination Status

At Least One Dose ▼



People Not Mapped: 428,293

Statewide Vaccine Dashboard

By Locality of Residence – Rates per 100,000



Total Doses Administered - 5,410,736

People Vaccinated with at Least One Dose*	% of the Population Vaccinated with at Least One Dose	People Fully Vaccinated^	% of the Population Fully Vaccinated
3,442,232	40.3%	2,166,158	25.4%

* People vaccinated with one dose of a two-dose vaccine and one dose of a single dose vaccine, including doses administered through the Federal CDC Pharmacy Partnership.

^ People vaccinated with two doses of a two-dose vaccine and one dose of a single dose vaccine, including doses administered through the Federal CDC Pharmacy Partnership.

People Vaccinated by Locality of Residence and Vaccination Status - Rate per 100,000 Population

At Least One Dose Rate per 100,000 Population

- 23643 - 27050
- 27051 - 30948
- 30949 - 35408
- 35409 - 40510
- 40511 - 46348
- 46349 - 53028
- 53029+

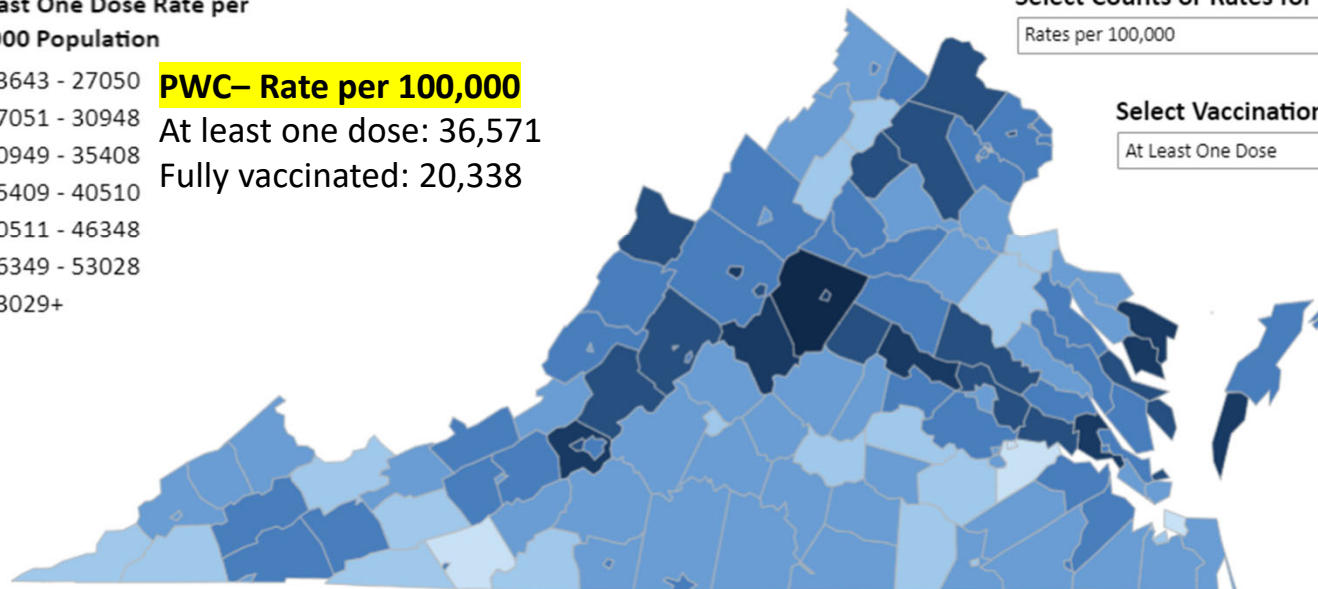
PWC– Rate per 100,000
 At least one dose: 36,571
 Fully vaccinated: 20,338

Select Counts or Rates for the Map

Rates per 100,000

Select Vaccination Status

At Least One Dose

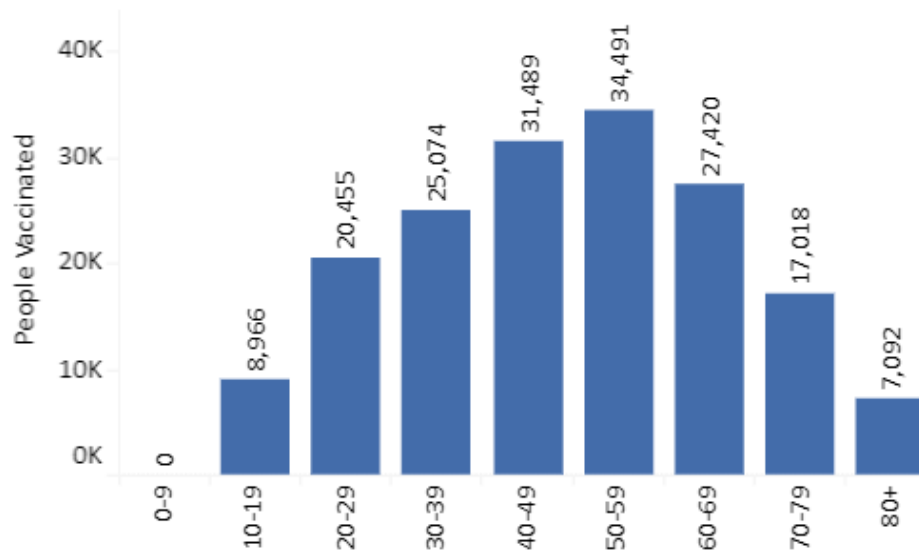


People Not Mapped: 428,293

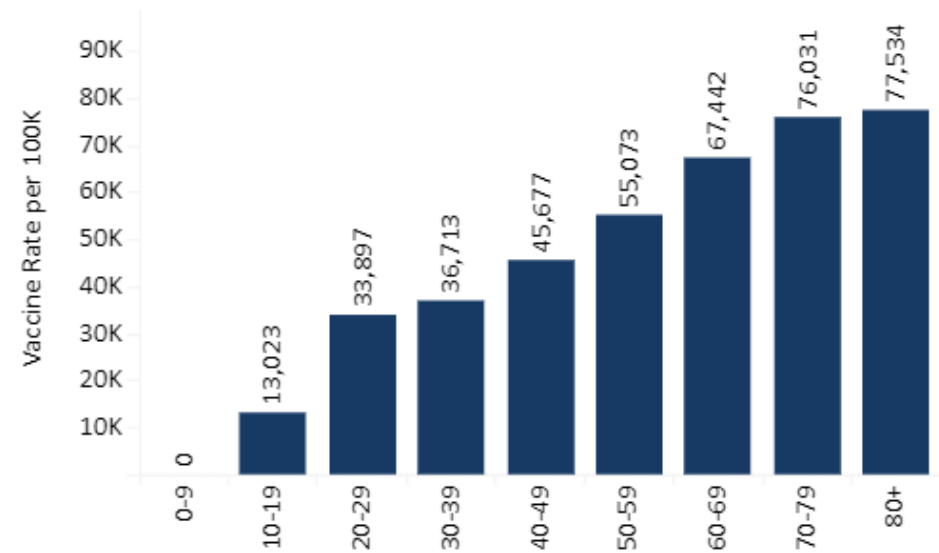
PWHD Vaccine Demographics - Age and Sex



Vaccination Count
By Age Group

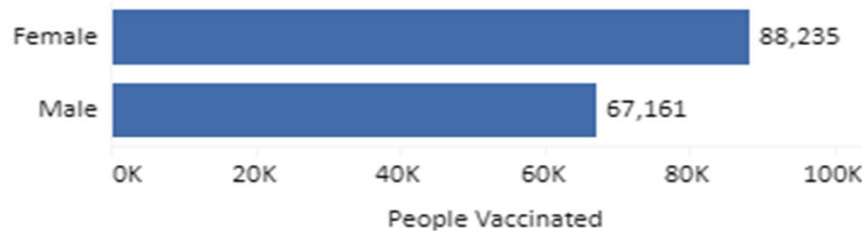


Vaccination Rate per 100,000 Population
By Age Group

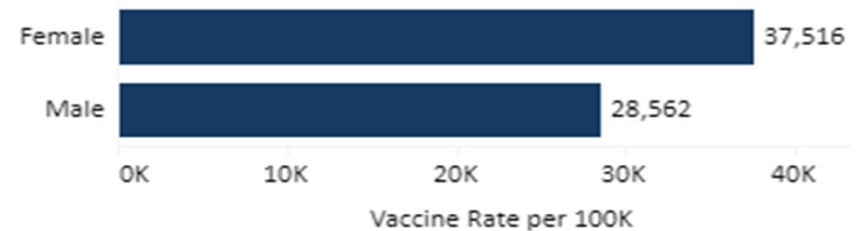


Not Reported: 0

Vaccination Count
By Sex



Vaccination Rate per 100,000 Population
By Sex



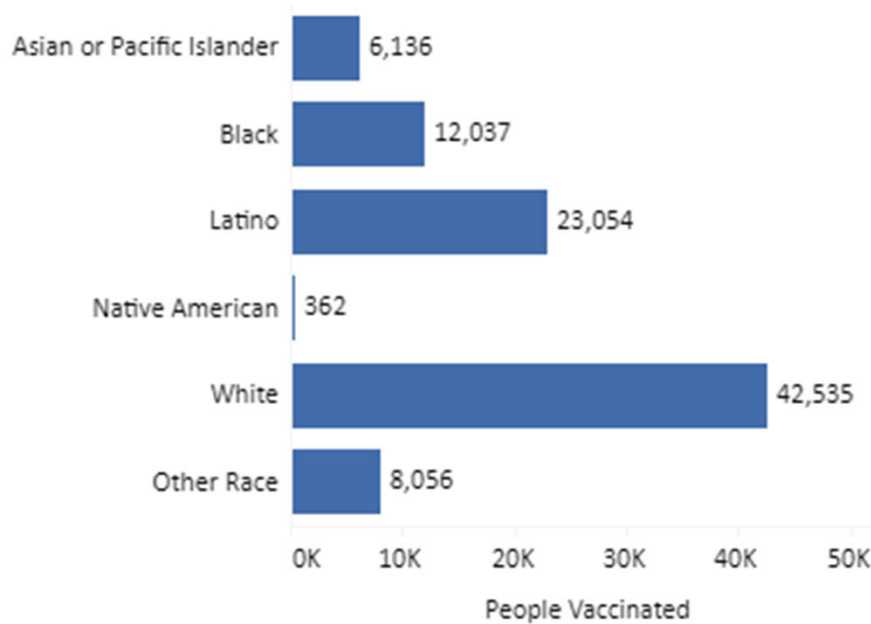
Not Reported: 344

PWHD Vaccine Count by Race



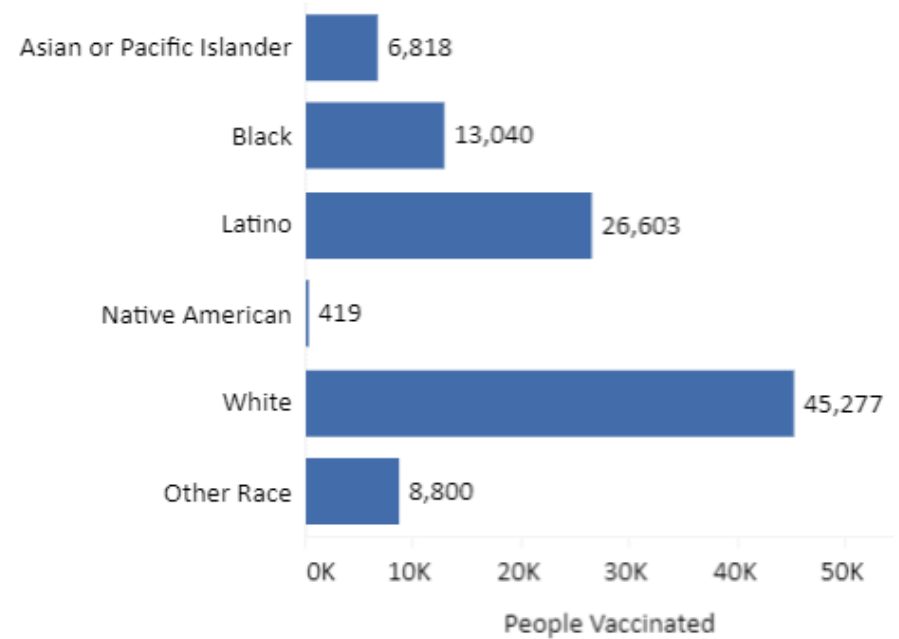
April 13, 2021

Vaccination Count
By Race and Ethnicity



April 20, 2021

Vaccination Count
By Race and Ethnicity



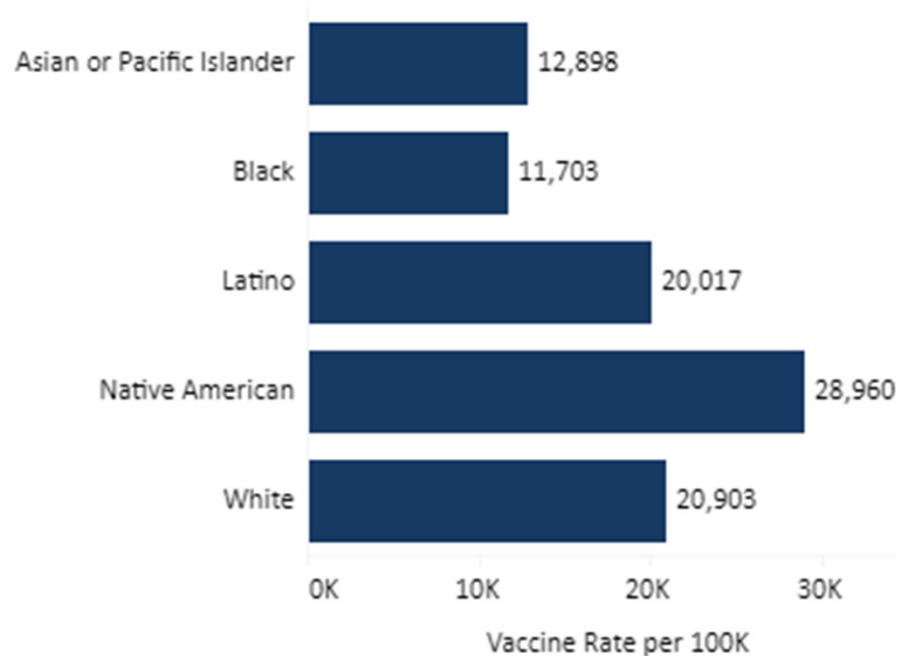
Not Reported: 71,048

PWHD Vaccine Rate per 100,000 by Race & Ethnicity



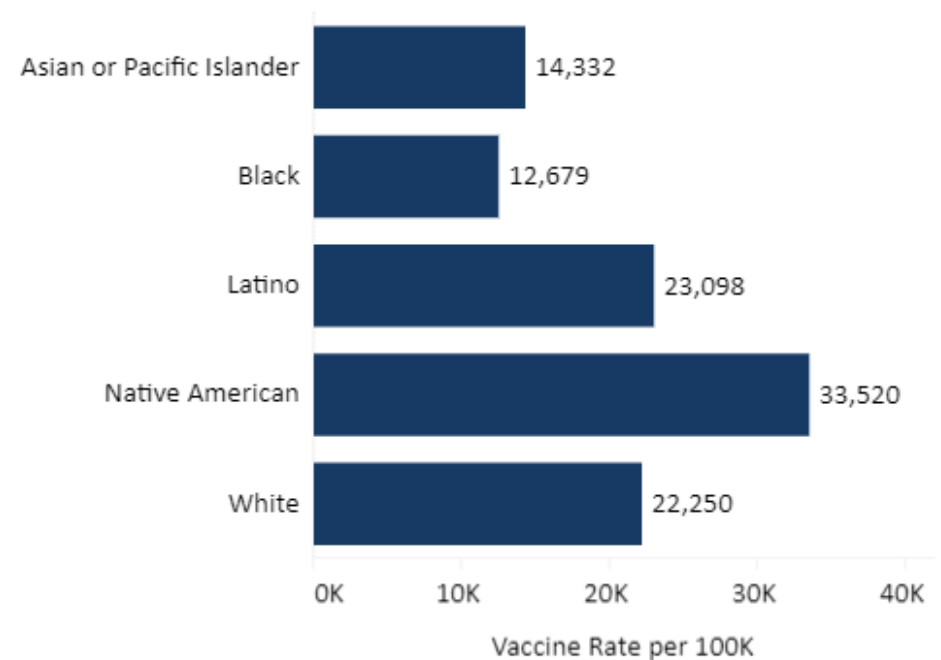
April 13, 2021

Vaccination Rate per 100,000 Population By Race and Ethnicity*



April 20, 2021

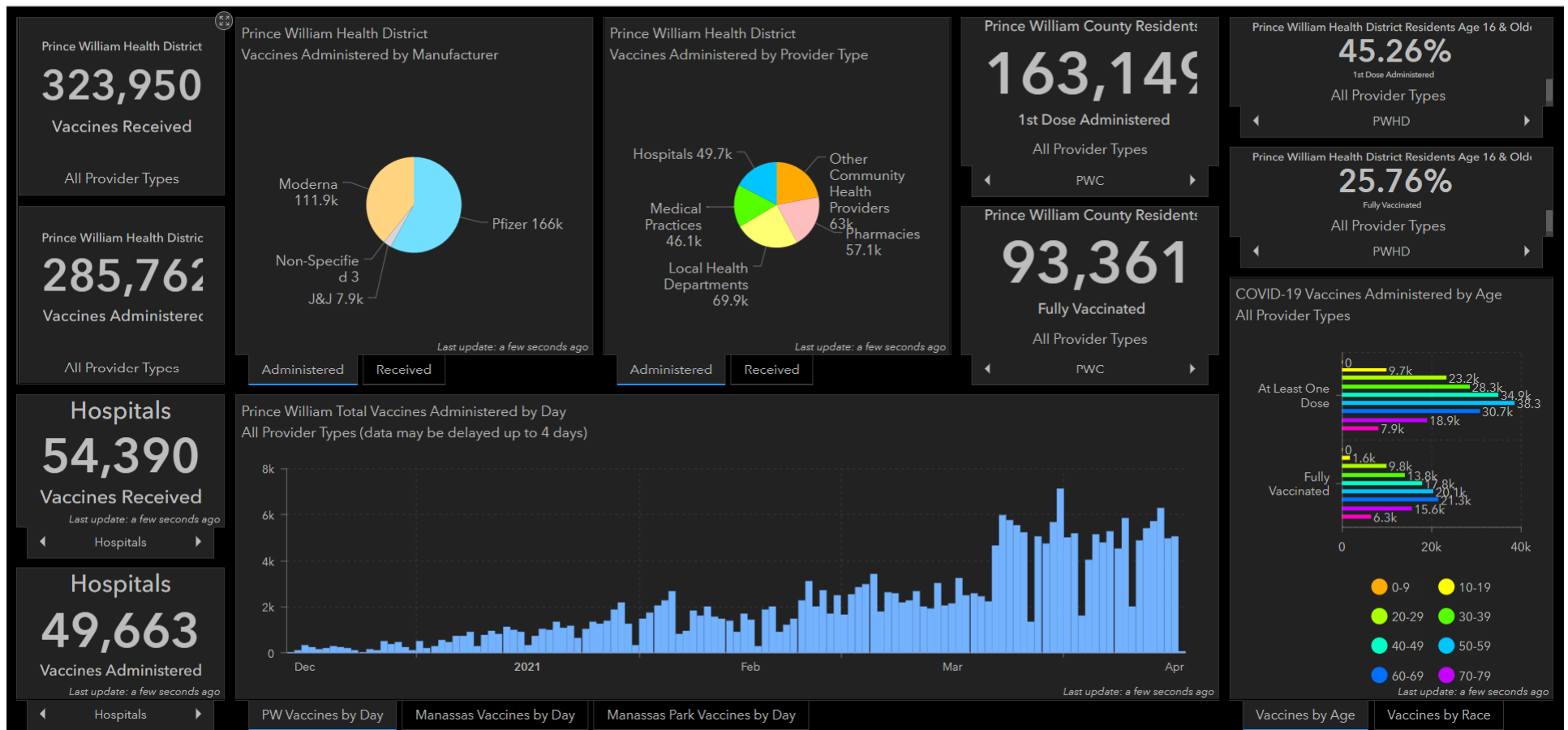
Vaccination Rate per 100,000 Population By Race and Ethnicity*



PWHD Vaccination Dashboard



- <https://pwcgov.maps.arcgis.com/apps/opsdashboard/index.html#/e39cdc00a66243d896b97a4cbb174d5d>



Vaccination Allocation Update

- Due to a reduction in supply from the Federal Government, the State and Prince William Health District will be receiving less vaccine as first doses over the next **3 weeks**.
- Change in Methodology:
 - Percentage allocation based on the population of 16–64-year-old's who are unvaccinated in the district.
 - For PWHD, 6.07% or about 12,000 new first doses per week.
 - Allows a full month of clinic planning.
- Direct State allocation of first doses to the Community Vaccination Center at Gander Mountain ends on 4/23
 - PWHD must supply the CVC from its inventory starting the week of 4/26.
- Second doses will continue to be allocated based on the location the first dose was administered.

Vaccination Clinics Overview

- Nearly 70,000 vaccinations have been conducted by PWHD, Community Vaccination Center, Safeway, Kaiser and Health Equity Sites in the past month.
- PWHD-Run Clinics:
 - Manassas Mall - Monday through Saturday, 1,100 doses per day
- Community Vaccination Center – Gander Mountain Site
 - 3,000 second doses per day Monday through Saturday
 - Up to 1,000 first doses per day through 4/22
- Safeway at Veteran’s Memorial Park: approx. 1,000 Pfizer first doses and 600 second doses
- Kaiser Haymarket – 1,170 Pfizer – Saturdays and Sundays

Community Health Equity Vaccine Clinics and Outreach Events



Events conducted last week:

- 3 pop-up booths + daily booth at Manassas Mall
- Scheduled over 170 appointments

This week's events include:

- Daily: booth at Manassas Mall
- Tuesday: pop-up booth at Prince William Parkway / US-1
- Wednesday – Thursday: canvassing North Woodbridge neighborhoods
- Wednesday – Friday: pop-up booth at Mother of Mercy clinic
- Thursday – Saturday: vaccine clinic at Mother of Mercy clinic (Woodbridge) in partnership with Sentara Healthcare.
- All sites will distribute tickets for upcoming vaccine clinics to eligible individuals

Call Center and Registration System Updates

- **Local Call Center** staffing ends this Friday 4/23 4:30 PM.
 - PWHD call center number will be updated as follows:
 - Testing calls handled by two temporary contractors
 - General info calls forwarded to PWHD admin offices
 - All vaccine scheduling-related questions forwarded to the State Call Center.
- **Scheduling:**
 - Transition of scheduling appointments to the VDH Vaccine Appointment Scheduling Engine (VASE) for PWHD and partner clinics complete.
 - Planned transition to VASE+ (replaces PrepMod) on 4/21.
 - VASE+ representatives from VDH will be on-site at Manassas Mall assisting with the transition.

Ongoing Outreach Campaign



Help Stop COVID-19



**WEAR A MASK
SOCIAL DISTANCE
WASH YOUR HANDS
GET THE VACCINE WHEN IT IS YOUR TURN
TO KEEP YOU AND YOUR LOVED ONES SAFE**



Questions

