

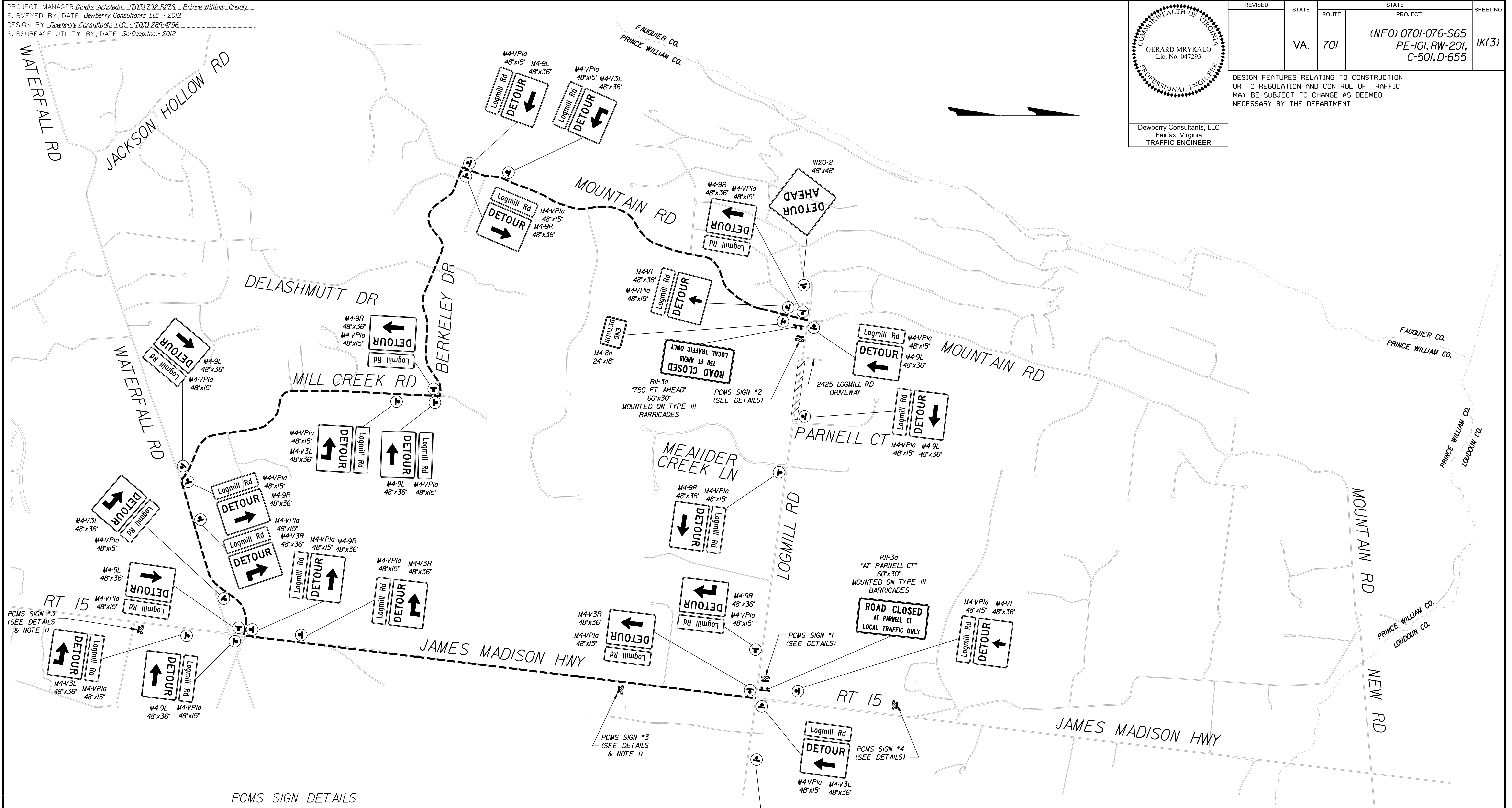
PROJECT MANAGER Gladis Acobedo - (703) 792-5276 - Prince William County  
SURVEYED BY, DATE Dewberry Consultants, LLC - 2012  
DESIGN BY Dewberry Consultants, LLC - (703) 289-4796  
SUBSURFACE UTILITY BY, DATE So-Deep, Inc. - 2012

GERARD MRYKALO  
Lic. No. 047293  
PROFESSIONAL ENGINEER

Dewberry Consultants, LLC  
Fairfax, Virginia  
TRAFFIC ENGINEER

REVISED	STATE	ROUTE	STATE PROJECT	SHEET NO.
	VA.	701	(INFO) 0701-076-S65 PE-101, RW-201, C-501, D-655	1K(3)

DESIGN FEATURES RELATING TO CONSTRUCTION OR TO REGULATION AND CONTROL OF TRAFFIC MAY BE SUBJECT TO CHANGE AS DEEMED NECESSARY BY THE DEPARTMENT



PCMS SIGN DETAILS

SIGNS #1 & #2		SIGNS #3 & #4	
1	2	1	2
A	LOGMILL ROAD TO CLOSE	LOGMILL RD WEST TO CLOSE	LOGMILL RD WEST CLOSED
B	STARTING XXX XX/XXXX	STARTING XXX XX/XXXX	FOLLOW DETOUR

LEGEND  
FOLLOW DETOUR

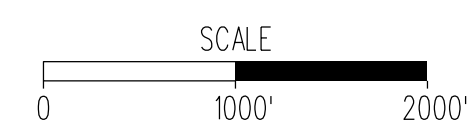
DISPLAY PCMS MESSAGES 1A AND 1B 2 WEEKS PRIOR TO CLOSURE.  
DISPLAY PCMS MESSAGES 2A AND 2B FROM THE TIME OF CLOSURE TO 7 DAYS AFTER TIME OF CLOSURE.  
XXX = DAY (EX. "MONDAY")  
XX = MONTH (EX. "09")  
XXXX = DATE (EX. "24TH")

NOTE 1 -  
PCMS #3 ON NB ROUTE 15 TO BE RELOCATED FROM JUST SOUTH OF LOGMILL ROAD TO JUST SOUTH OF WATERFALL ROAD AT THE TIME OF CLOSURE.

TEMPORARY TRAFFIC CONTROL - STAGE I

LEGEND

- LOGMILL RD DETOUR SOUTHERN ROUTE
- ▨ AREA CLOSED TO ALL TRAFFIC



TEMPORARY TRAFFIC CONTROL - STAGE I

PROJECT	SHEET NO.
(INFO) 0701-076-S65	1K(3)