

Map of Prince William County



467,900

Population

Attractions



Parks, Concerts, & Dining

- Manassas National Battlefield
- Virginia Gateway and Cabela's
- Hylton Performing Arts Center
- Jiffy Lube Live
- Ben Lomond Historic Site
- SplashDown Waterpark
- Farm Brew LIVE

30 Miles



Washington, DC

- Suburbs of Washington, DC



8 Members

Board of County Supervisors (BOCS)

- Elected Officials
- 4-year BOCS Member Term
- 1 Chair and 1 Vice-Chair
- 1-Year Vice Chair Term
- 7 Districts



County Executive

Appointed by the BOCS



Attractions

Parks, Shopping, Museum

- National Museum of the Marine Corps
- Historic Occoquan
- Leesylvania State Park
- Prince William Forest Park
- Kayaking, Boating and Watersports
- Potomac Mills and IKEA



History of Prince William County

Regional Perspective

Prince William County (PWC) is located in Northern Virginia, approximately 35 miles southwest of Washington, D.C. The County encompasses an area of 348 square miles, 18.8% of which is federally owned land.

Prince William's location in the Metropolitan Washington, D.C. area and the availability of excellent transportation in the region is a catalyst for growth in the County which continues to provide numerous economic advantages. Interstate 95 and U.S. Highway 1 connect the County with Washington, D. C. to the north and Richmond, Virginia to the south. Interstate 66 connects the western portion of the County with Washington, D.C. to the east and Interstate 81 to the west. The Route 234 Bypass links Interstate 66 in the west with 7,000 acres designated for industrial and commercial growth. Prince William Parkway includes a new interchange on Interstate 95 and prime development locations through the eastern portion of the County.

The County has a number of freight and passenger rail service alternatives available to its citizens and businesses. CSX and Norfolk Southern Railway provide freight service to the County. Amtrak passenger trains provide inter-city service to points up and down the Eastern seaboard from stations in the Town of Quantico and the City of Manassas. The Virginia Railway Express provides passenger service to and from the District of Columbia from four stations within the County.

Dulles International Airport, Reagan National Airport, and Manassas Regional Airport provide air transportation within easy access of PWC.



Map provided by Prince William County Office of Tourism; Department of Parks, Recreation & Tourism

History of Prince William County

Local Government

PWC Government has exercised local governing powers granted by the Virginia General Assembly in 1730. Since 1972, PWC has had the County Executive form of government. Under this form of government, an eight member Board of County Supervisors (BOCS) has full power to determine the policies covering the financial and business affairs of the County government. The BOCS appoints a County Executive to act as the County government's chief administrative officer and to execute the BOCS policies. The BOCS also appoints a County Attorney and several separate Boards and Authorities to administer the operations of certain services. The County provides a full range of local government services including police, fire and rescue, court services, education, development administration, library, water and sewer services, park and recreational services, health and social services, public improvements, planning, and general administration.

History



Captain John Smith first discovered PWC during an expedition up the Potomac River in 1608. Smith found the region inhabited by Anacostan, Doeg, Iroquois, and Piscataway Indians. The first known colonial settlement was founded in 1722. In 1730, the Virginia General Assembly carved out an area approximately 2,000 square miles in size and named it PWC, after the third son of England's King George II. At that time PWC comprised all of "Northern Virginia" but by 1759, the General Assembly substantially reduced the County's size. Fairfax County was formed in 1742 and Fauquier County was formed in 1759, both from the original PWC area.

In 1730, the Dumfries area was prominent in the County and may have been the location of an official Tobacco Inspection Station due to its close proximity to the Potomac River. This is important because the Potomac River was a major regional route used to export tobacco to England, which was profitable for the southern colonial regions. The Tobacco Inspection law, passed in Virginia in 1730, required all exported tobacco shipments to bear an inspection certificate. Dumfries officially became a town in 1749 and in 1763 it reached an economic milestone by exporting more tobacco tonnage than the colony of New York.

Economic and political displeasure with the British government reached the breaking point for Prince William colonists in 1773. Pro-colony groups such as the Prince William Resolvers voiced protest against the erosion of colonial liberties. As England had ordered all colonial governors to cease granting lands, except to veterans of the French and Indian War, further financial strains were wrought against the colonies through taxation, including the infamous Tea Act and Stamp Act. In 1774, under ever-mounting pressure, the Virginia Convention adopted resolves against the importation of British goods and the importation of slaves. The Virginia Convention also required each county to form a volunteer company of cavalry or infantry. Prince William had already formed a volunteer unit a year before. The Independent Company of Prince William, under the leadership of Captains William Grayson and Philip Richard Francis Lee, was a volunteer unit comprised of 40 plus infantrymen. Many troops from the Independent Company of Prince William joined others from around the state to form two Colony regiments sanctioned by the third Virginia Convention in 1775. After the start of the Revolutionary War in 1776, the remaining troops of the "Company" became known as the Prince William District Battalion. In June of that year, Captain Grayson was appointed Assistant Secretary to General George Washington.

History of Prince William County

The war ended and news of the ratification of the Treaty of Paris between the United States and Great Britain reached Virginia on February 3, 1784. PWC soldiers from the Virginia regiments returned home to their families. Before the War Between the States, the population of PWC reached 11,000 and the African American population was 43.4%. Many African Americans in Virginia at this time were free from slavery and indentured servitude. Virginia legislators passed a law in 1782 permitting the freeing of slaves; however, colonies further south did not participate in similar legislation. Haymarket emerged as a large population center in 1799, with Occoquan following in 1804, and Brentsville in 1822.

The County thrived through the early and mid-1800s. The railroad era began in Virginia around 1811 and in 1851 the railroad reached Manassas. Manassas Junction brought a new form of shipping and travel to the area. It also became a crucial stratagem for cutting off supplies to either side throughout the War Between the States. The first threat to the railroad junction was the Battle at Blackburn's Ford after Virginia seceded from the Union in 1861. Although the Battle at Blackburn's Ford was short-lived, it was a prelude to the First Manassas battle three days later in July 1861. First Manassas was the first major land battle of the Union and Confederate armies in Virginia after the Confederate takeover of Fort Sumter in South Carolina. The Union objective was to seize the Manassas Junction Railroad. Late in the battle while attempting to rally his men, Confederate General Bee used General Thomas J. (Stonewall) Jackson's newly arrived brigade as an anchor in the Confederate line. Pointing to Jackson, Bee shouted, "There stands Jackson like a stone wall! Rally behind the Virginians!" earning Jackson his sobriquet.

Other lesser-known battles were also fought in the County; they include Cockpit Point and Chapman's Mill. Cockpit Point, a stretch of shoreline along the Occoquan River, is where the Confederate army formed a blockade at the Potomac River to cut off supplies to Washington D.C.

The second major engagement between Union and Confederate forces in the County was Second Manassas in August 1862. In a prelude to the battle Confederate forces seized the Union supply depot at Manassas Junction destroying everything they could not carry with them. Two days later Union General Pope believing he had Stonewall Jackson's corps isolated attacked unaware that General Longstreet's Confederate corps was also on the field. Longstreet's 28,000 men counter-attacked in the largest simultaneous mass assault of the war driving the federals back to Bull Run. Only effective rear guard action prevented a replay of the First Manassas disaster.

The last battle fought in PWC was at Bristoe Station in 1863. A Confederate corps happened upon a retreating Union army at Bristoe Station and attacked. Other Union soldiers in the area countered the small corps and captured a Confederate battery of artillery. Although there was heavy troop movement through the County during the war from all sides, it escaped the massive destruction leveled against Richmond.

Manassas became a town in 1873. In 1892 Manassas became the County Seat for Prince William. Rebuilding the area to its former glory was almost an impossible task for locals. Grand manors and local businesses blighted during the War were replaced by modern inventions and post war architecture. The railroad was reconstructed and expanded westward. Education became more important and schools sprung up almost overnight. Ironically, a former Union Army Officer, George Carr Round, relocated to Manassas and helped to build its first public school. He later served on the Town Council and was a member of the Virginia General Assembly. Many schools and colleges opened in the County including the Manassas Industrial School for Colored Youth and Eastern College. The Manassas Industrial School for Colored Youth was founded by Jennie Dean in 1894. The purpose of the school was to improve the moral and intellectual condition of the youth placed under its care. Eastern College attracted students from over 22 states and 2 foreign countries. Eastern was transformed into a military academy and later closed in 1935. Other academies and military schools opened in the area in the early 1900s. The ultimate military training academy was founded on a peninsula



History of Prince William County

southwest of the Town of Occoquan, on the Quantico River in 1917. The Quantico Marine Base became an official training facility for the Navy before World War I, and was one of the first Marine training centers not housed on a naval base. The Town of Quantico, surrounded by the Marine base, was incorporated in 1927.

PWC was the birthplace or home of many notable personalities including George Mason II, Henry Lee III (the father of General Robert E. Lee), William Grayson, John Ballendine, Parson Mason Locke Weems, Benita Fitzgerald, the Chinn Family, Simon Kenton, Jennie Dean, James Robinson, Wilmer McLean, and many more. From pre-colonial times to modern day, PWC was and continues to be a dynamic community.

Statistical & Background Information

Statistical Information

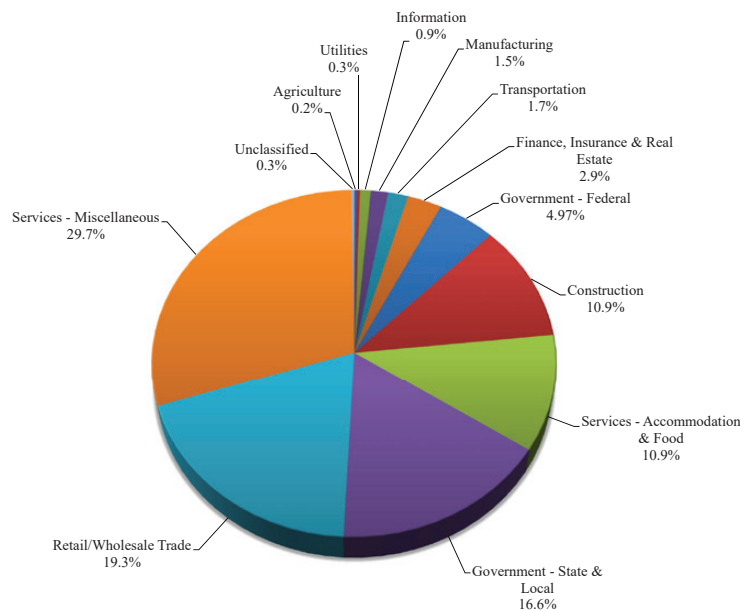
Employment

PWC February 2019 unemployment rate was 2.9%. The unemployment rate continues to remain below national and state averages. The average annual unemployment rate in Virginia, as of February 2019, was 3.2%. In the United States, the April 2019 unemployment rate was 3.6%.

The services, government, and retail sectors reflect the greatest sources of employment within PWC.

Source: [PWC Geographic Information Systems – Select Economic Stats](#); [National rate data](#); [Virginia Employment Commission](#)

Employment By Industry



Unemployment Rates

Year	Prince William County	Virginia	United States
2006	2.4%	3.1%	4.6%
2007	2.5%	3.0%	4.6%
2008	3.3%	3.9%	5.8%
2009	5.4%	6.7%	9.3%
2010	6.1%	7.1%	9.6%
2011	5.7%	6.6%	8.9%
2012	5.3%	6.0%	8.1%
2013	5.2%	5.7%	7.4%
2014	4.9%	5.2%	6.2%
2015	4.1%	4.4%	5.3%
2016	3.3%	3.8%	4.4%
2017	3.0%	3.4%	3.9%
2018	2.7%	3.0%	3.9%

Source: [PWC Geographic Information System – Average Annual Unemployment Rates](#)

Source: [Bureau of Labor Statistics – Labor Force Statistics from the Current Population](#)

Employment by Industry											
Industries	2018	2017	2016	2015	2014	2013	2012	2011	2010	2009	2008
Agriculture	0.20%	0.17%	0.14%	0.13%	0.12%	0.13%	0.14%	0.12%	0.12%	0.12%	0.10%
Construction	10.90%	10.76%	10.56%	11.08%	10.59%	10.66%	10.23%	9.71%	9.81%	9.62%	11.40%
Finance, Insurance & Real Estate	2.90%	3.00%	3.03%	3.10%	2.98%	2.99%	3.03%	2.93%	3.00%	2.95%	2.98%
Government - Federal	4.97%	4.95%	5.01%	5.34%	5.73%	5.99%	21.62%	23.53%	23.71%	23.45%	21.35%
Government - State & Local	16.60%	16.55%	16.34%	16.92%	16.68%	15.69%					
Information	0.91%	0.96%	0.85%	1.18%	1.16%	1.17%	1.16%	1.10%	1.21%	1.28%	1.33%
Manufacturing	1.46%	1.57%	1.59%	1.53%	1.58%	1.64%	1.89%	1.94%	1.67%	1.68%	1.92%
Retail/Wholesale Trade	19.27%	19.81%	20.52%	21.64%	21.07%	20.68%	20.64%	21.23%	21.43%	21.70%	21.59%
Services - Miscellaneous	29.68%	29.26%	28.85%	25.89%	27.62%	27.83%	39.19%	37.19%	36.61%	36.81%	37.01%
Services - Accommodation & Food	10.87%	10.80%	10.92%	11.02%	10.53%	11.17%					
Transportation	1.70%	1.60%	1.65%	1.73%	1.65%	1.72%	1.77%	1.87%	2.06%	2.00%	1.81%
Unclassified	0.25%	0.27%	0.26%	0.15%	0.00%	0.00%	0.00%	0.00%	0.00%	0.00%	0.10%
Utilities	0.29%	0.31%	0.28%	0.29%	0.30%	0.32%	0.33%	0.36%	0.38%	0.40%	0.41%
Total Employment		100.00%	100.00%	100.00%	100.00%	100.00%	100.00%	99.98%	100.00%	100.00%	100.00%

Note (2013): Services category includes: Professional, Scientific, and Technical Services; Management of Companies and Enterprises; Educational Services; Health Care and Social Assistance; Arts, Entertainment, and Recreation; Other Services (except Public Administration).

Source: [2018 Virginia Employment Commission](#)

Statistical & Background Information

Principal Employers			
Rank	Taxpayer	Ownership	Number of Employees
1	Prince William County School Board	Local Government	1,000 and over
2	County of Prince William	Local Government	1,000 and over
3	U.S. Department of Defense	Federal Government	1,000 and over
4	Wal Mart	Private	1,000 and over
5	Morale Welfare and Recreation	Federal Government	1,000 and over
6	Sentara Healthcare/Potomac Hospital Corporation	Private	1,000 and over
7	Wegmans Store #07	Private	500 to 999
8	Northern Virginia Community College	State Government	500 to 999
9	Target Corporation	Private	500 to 999
10	M J Morgan Group	Private	500 to 999

Source: Prince William County, 2018 CAFR – Table 17 – Principal Employers

Real Estate Tax Base

- Total real estate assessments – \$61.1 billion in tax year 2018, an increase of 5.9% from the prior year.
- In 2018, the top ten principal real property tax payers constituted 4.56% of the total County taxable assessed value.
- The FY20 real estate rate per \$100 of assessed value real estate tax is \$1.125; as adopted by the BOCS, the same rate as FY19.
- Each penny on the rate generates approximately \$6.157 million in real estate revenue in FY20.

Source: Prince William County, Real Estate Assessments Office 2018 Annual Report; 2018 CAFR – Table 7, Table 9

2014-2018 Tax Year Comparisons					
	2014	2015	2016	2017	2018
	FY2015	FY2016	FY2017	FY2018	FY2019
Commercial Property as a % of Total Real Estate Tax Base	13.58%	13.33%	13.28%	14.14%	15.14%
Average Assessed Value of All Residential Property	\$312,100	\$332,600	\$340,200	\$346,700	\$359,100
Tax Rate per \$100 of assessed value	\$1.148	\$1.122	\$1.122	\$1.125	\$1.125
Change in Residential Property Value	7.62%	6.18%	1.79%	1.78%	3.28%
Change in Commercial Property Value	2.22%	4.74%	1.47%	7.93%	3.89%
Tax Exempt Property as Percentage of Total Assessed Value	6.83%	6.47%	6.49%	6.58%	6.56%

Source: Prince William County Real Estate Assessments Office 2018 Annual Report

Statistical & Background Information

Top Ten Principal Real Property Taxpayers			
Rank	Taxpayer	Taxable Assessed Value	Percentage of Total County Taxable Assessed Value
1	VA Electric & Power Company	\$885,355,000	1.53%
2	Mall at Potomac Mills, LLC	\$505,752,000	0.87%
3	Northern Virginia Electric Co-op	\$324,481,000	0.56%
4	Verizon South, Inc.	\$159,398,000	0.28%
5	Porpoise Ventures, LLC	\$145,130,000	0.25%
6	Washington Gas Light Company	\$140,508,000	0.24%
7	Powerloft @ Innovation I LLC	\$134,863,000	0.23%
8	JBG/Woodbridge Retail LLC	\$126,017,000	0.22%
9	Rolling Brook Windsor LLC	\$117,766,000	0.20%
10	KIR Smoketown Station LP	\$106,994,000	0.18%

Source: Prince William County [CAFR 2018 Table 9 Principal Real Property Tax Payers](#):

Housing Characteristics

- 154,821 housing units in PWC:
 - 84,527 (54.60%) are one unit, detached (single – family and mobile homes).
 - 38,426 (24.82%) are townhouses/attached.
 - 31,868 (20.58%) are units in multi-family structures.
- Median value of owner occupied housing units:
 - PWC, \$358,300
 - Virginia, \$255,800
 - United States, \$193,500

Source: [PWC Geographic Information Systems – Quarterly Estimates](#); [US Census Bureau – QuickFacts](#)

Housing Units		
Year	Housing Unit	Growth Over Past Decade
1950	5,755	62.3%
1960	13,207	129.5%
1970	29,885	126.3%
1980	46,490	55.6%
1990	74,759	60.8%
2000	98,052	31.2%
2010	137,115	39.8%

Source: [U.S. Department of Commerce, Bureau of The Census 1950 – Census 2020](#)

Statistical & Background Information

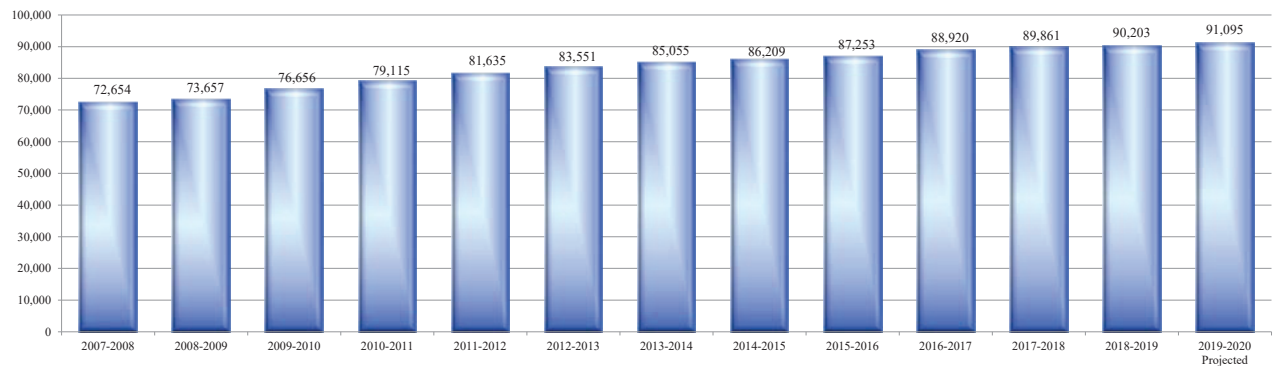
Population Growth

The County has experienced one of the most rapid population growths in the nation for the last quarter century.

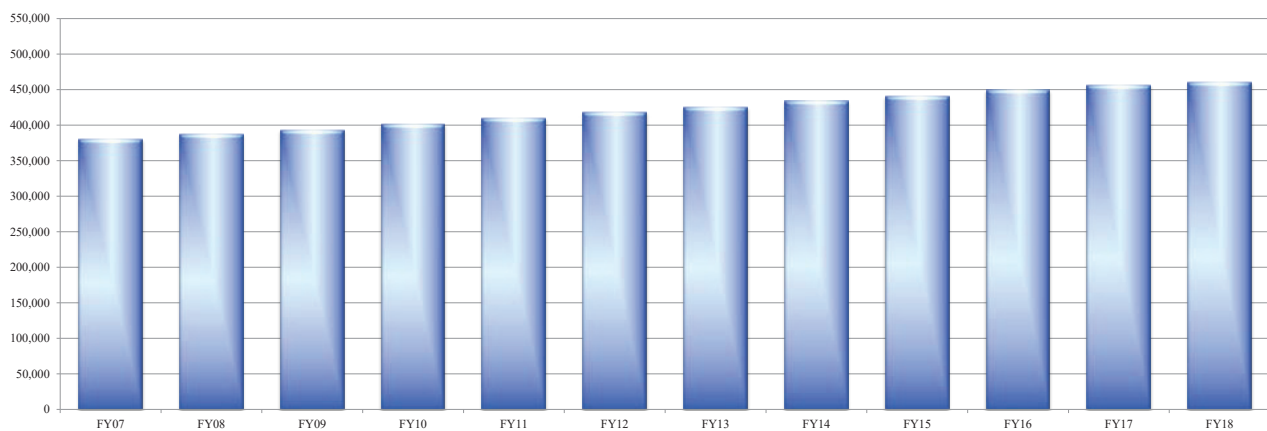
- Demographic facts about the population in PWC:
 - Population distribution, 49.9% male and 50.1% female.
 - 27.7% of population is under 18 years of age.
 - 55.4% of population is Hispanic, Black or other race.
- Education of County residents 25 years or older:
 - 39.8% hold a Bachelor’s degree or higher.
 - 88.8% have a high school diploma or higher.
- Students registered in Prince William County Schools (PWCS):
 - 91,095 students are projected to be enrolled in the 2019–2020 school year.

Sources: PWC Geographic Information Systems – Fast Facts; US Census Bureau – QuickFacts; PWC Public Schools – Executive Summary of Proposed Budget

Number of Registered Students by School Year



Annual Population of Prince William County



Statistical & Background Information

Median Income

The median household income in the County increased slightly from FY19 to FY20 by \$2,513.

- The County median household income has increased 53.2% from 2000–2017:
 - PWC, \$101,059
 - Virginia, \$68,766

Median Household Income		
Year	Amount	Growth
1990	\$49,370	—
2000	\$65,960	33.6%
2010	\$91,098	38.1%
2017	\$101,059	10.9%

Source: U. S. Census Bureau – Quick Facts

Trends in Selected Financial Indicators

- **Debt Service Ratio:** County policies require that the amount of debt service not exceed 10.0% of annual savings.
- **Unassigned Fund Balance:** Unexpended funds available to finance future operating or to provide for unforeseen expenditures.
- **Actual Revenues as Percent of Estimates:** Highlights the accuracy of the County revenue estimates, accurate estimates enable better planning of expenditures and service delivery.
- **Bond Rating:** The rating is a reflection of the commercial financial marketplace’s perception of the economic, administrative, and character strengths of the County.

More detailed financial information is available in the Comprehensive Annual Financial Report (CAFR) and the FITNIS, or Financial Trends Report, available online at the County’s website, www.pwcgov.org/finance.

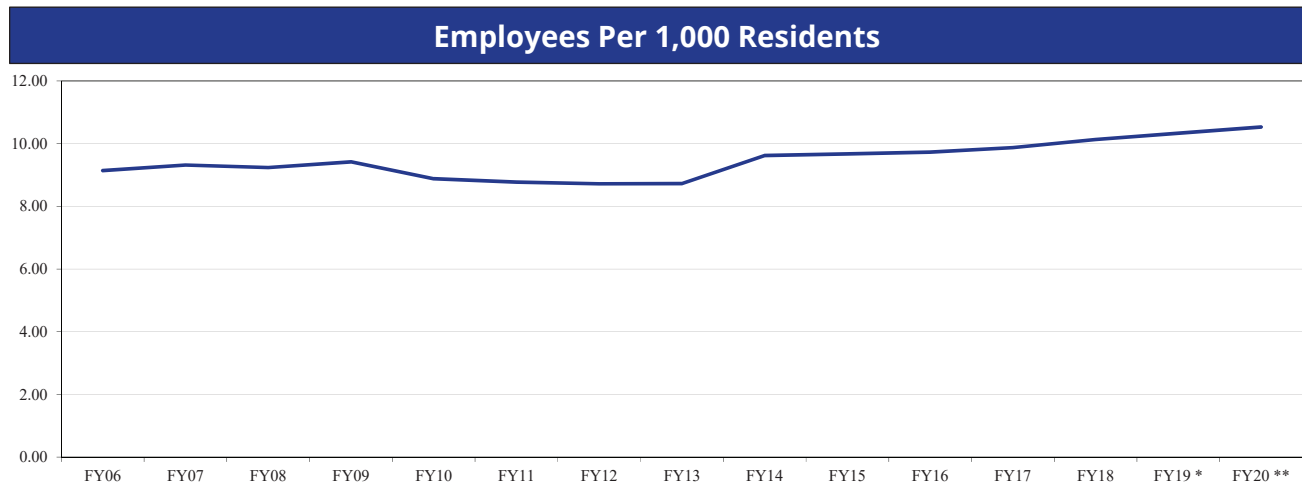
Trends in Selected Financial Indicators				
Fiscal Year	Ratio of Debt Service to Revenues ¹	Unassigned Fund Balances as a Percent of Revenue ²	Actual Revenues as a Percent of Revenue Estimate ³	Bond Rating (Fitch and S&P / Moody's) ⁴
FY04	6.30%	7.00%	103.00%	AA+/Aa1
FY05	6.40%	7.30%	104.80%	AAA/Aa1
FY06	6.80%	7.50%	101.60%	AAA/Aa1
FY07	6.60%	7.50%	98.90%	AAA/Aa1
FY08	7.30%	7.50%	98.40%	AAA/Aa1
FY09	7.10%	7.50%	102.20%	AAA/Aa1
FY10	9.70%	7.50%	100.50%	AAA/Aaa
FY11	7.60%	7.50%	102.50%	AAA/Aaa
FY12	8.10%	7.50%	99.70%	AAA/Aaa
FY13	7.50%	7.50%	98.91%	AAA/Aaa
FY14	7.10%	7.50%	100.30%	AAA/Aaa
FY15	7.40%	7.50%	99.20%	AAA/Aaa
FY16	8.30%	7.50%	103.70%	AAA/Aaa
FY17	8.20%	7.50%	104.08%	AAA/Aaa
FY18	7.90%	7.50%	102.75%	AAA/Aaa

Source: Prince William County, 2018 CAFR (1) Table 14; (2) Exhibit 3 & 5; (3) Schedule 1; (4) Bond Ratings, Page 33pdf

Statistical & Background Information

General County Government Staffing

PWC has 10.53 employees per 1,000 residents for FY20, reflecting an increase of 0.20. The majority of the staffing increase is attributable to the addition of 62 public safety personnel and 14 general government positions.



Local Government Staffing		
Year	Staffing	Employees Per 1,000 Residents
FY06	3,393	9.14
FY07	3,552	9.32
FY08	3,586	9.24
FY09	3,701	9.42
FY10	3,570	8.88
FY11	3,601	8.77
FY12	3,645	8.72
FY13	3,714	8.73
FY14	4,172	9.62
FY15	4,272	9.67
FY16	4,378	9.73
FY17	4,503	9.87
FY18	4,665	10.13
FY19*	4,808	10.33
FY20**	4,954	10.53

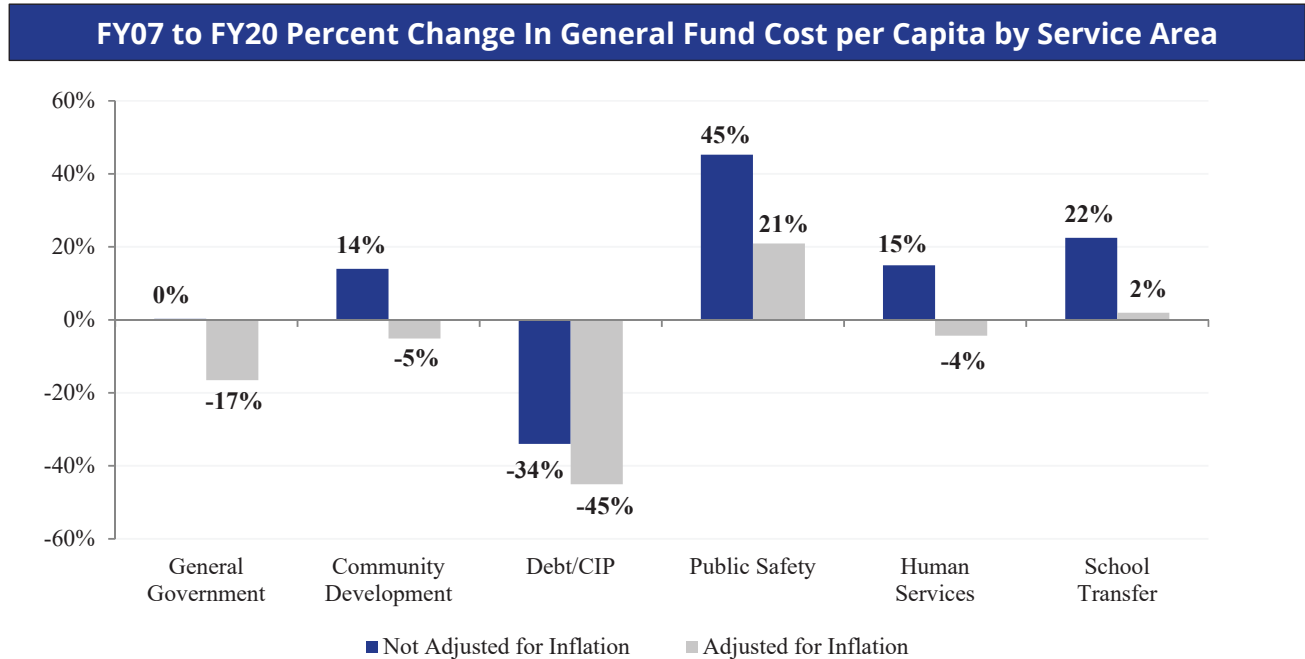
* Population is the PWC GIS Division in DoIT, Quarter 1, 2019 of 465,372.

** Population is the 2020 COG Projection of 470,400.

Statistical & Background Information

Cost Per Capita

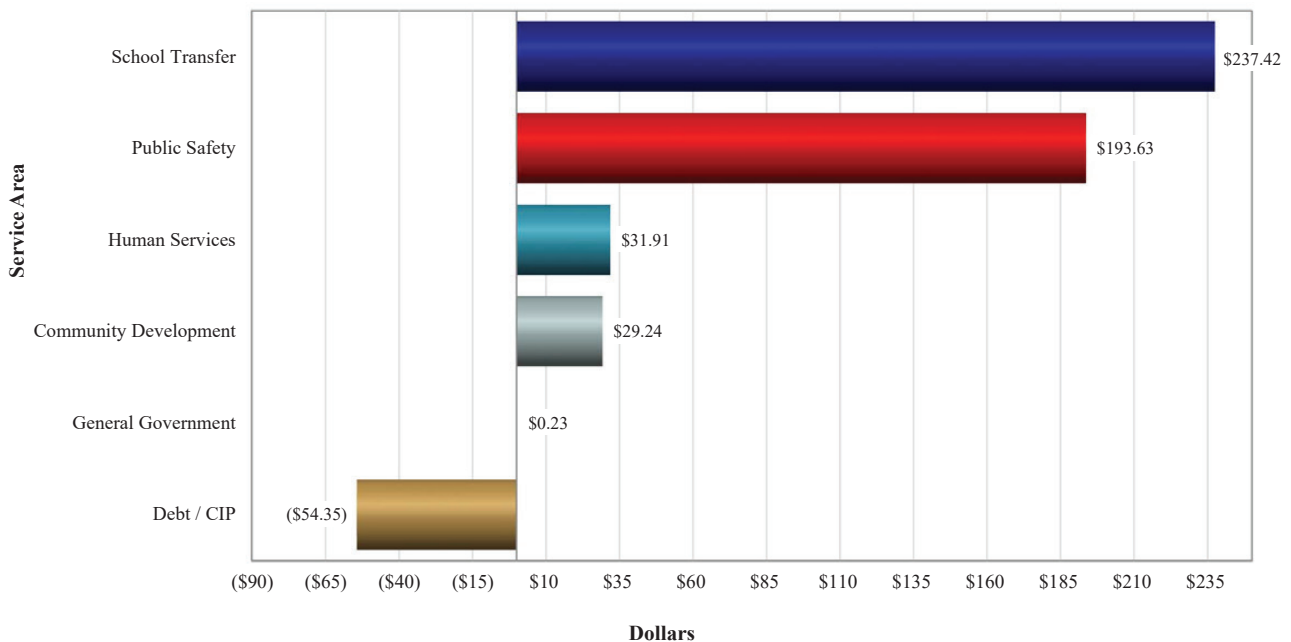
The following graph shows the percentage change in cost per capita of the general fund budget between the FY08 and FY20 budgets by County service area. The graph shows the percentage change for each service area not adjusted for inflation as well as adjusted for inflation.



The following graph shows the budget change by County service area from FY08 through the FY20 adopted budget. These figures are not adjusted for inflation. The largest growth areas (School Transfer, Public Safety, and Human Services) correspond directly with the County’s adopted strategic goals.

FY07 to FY20 Dollar Change In Cost Per Capita by Service Area

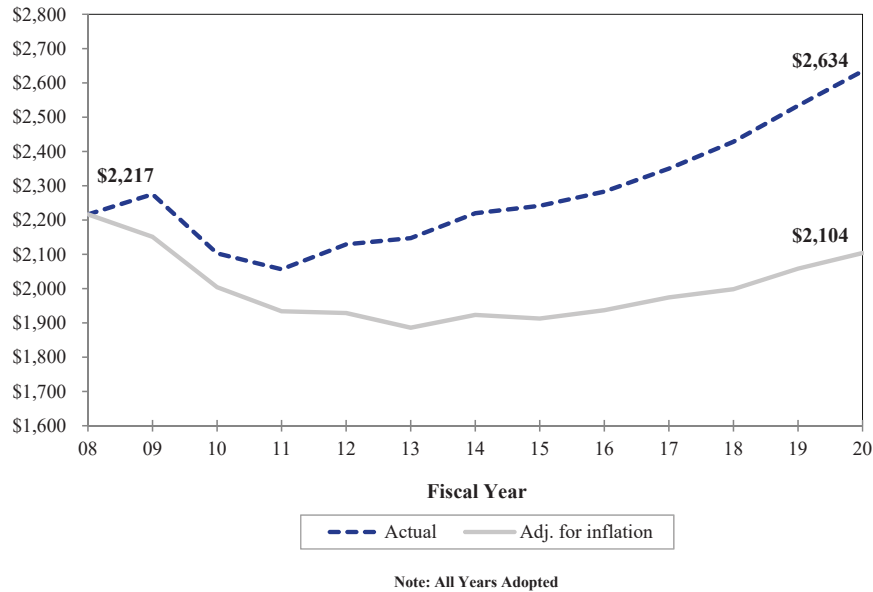
(Not Adjusted for Inflation)



Statistical & Background Information

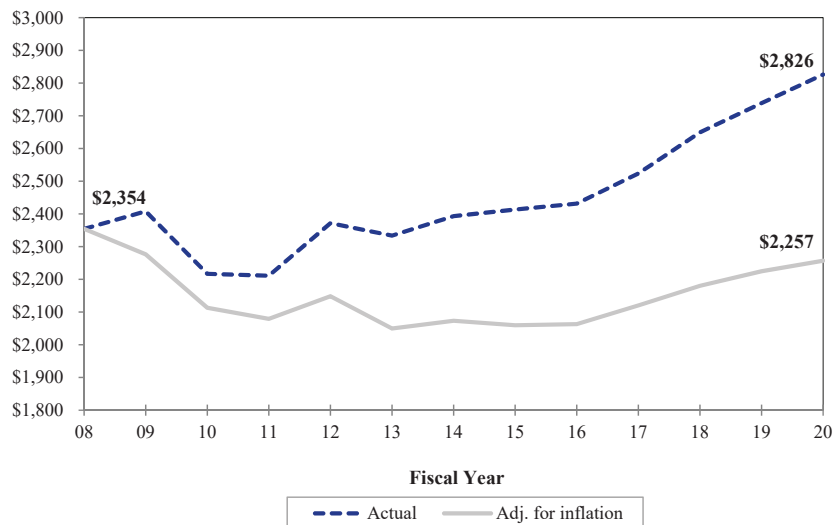
The following graph shows that the cost per capita of the general fund budget for FY20 when adjusted for inflation is 5.1% less than the cost per capita in FY08. The population for FY20 is based on the Council of Governments projection of 470,400.

Cost Per Capita of General Fund Budgets



The following graph shows the cost per capita of selected County budgets (general fund, fire levy, solid waste enterprise fund, stormwater special revenue fund, and mosquito and forest pest management special revenue fund) for FY20 when adjusted for inflation is 4.14% less than the cost per capita in FY08.

Cost Per Capita of Selected County Budgets*



* All Years Adopted; Includes General Fund, Fire Levy, Solid Waste, Stormwater, and Mosquito & Forest Pest Mgmt.

Glossary

Account: Detailed classification established to budget and account for the purchase of specific goods and services and the receipt of revenues from specific sources; also known as line item.

Accrual Basis of Accounting: Under the accrual basis of accounting, revenues are recognized when service is delivered and expenses are recognized when the benefit is received. All County proprietary funds use the accrual basis of accounting.

Activity: A specific and distinguishable line of work performed within a program; the most basic component of service delivery for each County agency and its budget.

Adopted Budget: The initial budget for the fiscal year approved by the Board of County Supervisors as a result of the annual budget process. Adopted differs from appropriated in the budget document's financial summaries in that appropriated includes all budget revisions subsequent to the initial adopted budget such as off-cycle budget adjustments, budget transfers and prior year appropriations.

Agency: A separate organizational unit of County government established to deliver services to citizens.

Appropriation: An amount of money in the budget, authorized by the Board of County Supervisors, for expenditure by departments for specific purposes. For example, general fund appropriations are for operating and general purposes while Capital Improvement Project Fund appropriations are for major improvements such as roads and public facilities.

Ascend: Financial management system used by the County to manage financial activity and prepare the annual budget beginning in FY17.

Assess: To place a value on property for tax purposes.

Assessed Valuation: The value of property within the boundaries of Prince William County for purposes of taxation.

Assets: Resources owned or held by Prince William County that have monetary value.

Assigned Fund Balance: Amounts that are constrained by the government's intent to be used for specific purposes, but are neither restricted nor committed.

Audit: To examine (accounts, records, etc.) for purposes of verification, appropriateness, risk, and/or efficiency.

Auditor of Public Accounts: A state agency that oversees accounting, financial reporting, and audit requirements for units of local government in the state of Virginia.

Balanced Budget: A budget that has its funding sources (revenues plus other resources) equal to its funding uses (expenditures plus other allocations). All local governments in Virginia must adopt a balanced budget as a requirement of state law.

Glossary

Base Budget: The same level of agency funding as in the current year adopted budget with adjustments for: one-time costs; agency revenue reductions; current fiscal year merit pay roll-forward adjustments; current year personnel actions; benefit cost changes; full year funding for partial year funded positions approved for the current fiscal year; approved budget shifts; Board of County Supervisors actions approved during the current fiscal year; and any related outcome and service level target revisions.

Base Budget Review: A process that evaluates departmental base budgets in order to determine if an activity should continue to be funded at the current level.

Board Audit Committee: A committee of the Board of County Supervisors (BOCS), supported by the internal audit function, established to assist the BOCS in its governance and oversight responsibilities. All members of the BOCS comprise the BAC, which consists of three regular voting members and five alternate members. The internal audit function reports to the BOCS, through the BAC.

Bond Rating: The rating of bonds is a statement of a locality's economic, financial, and managerial condition. It represents the business community's assessment of the investment quality of a local government. Highly rated bonds attract more competition in the marketplace, thereby lowering interest costs paid by the County government and its taxpayers.

Bonds: Instruments used to borrow money for the debt financing of long-term capital improvements.

Business Professional and Occupational License Tax: A tax that is levied upon the privilege of doing business or engaging in a profession, trade, or occupation in the County. The tax base includes all phases of the business, profession, trade, or occupation, whether conducted in the County or not.

Budget: An itemized allotment of revenues and expenditures for a specific time period, tied to specific activities.

Budget Amendment: Any change to the adopted budget that may occur throughout the course of the fiscal year as needed for County government operations.

Budget Authority: Ability to enter into transactions that will result in the receipt or disbursement of County funds.

Budget Initiatives: Changes to the base budget recommended by the County Executive as part of the Proposed Budget. Supplemental budget increases and decreases approved by the Board of County Supervisors are shown as Budget Initiatives in the agency detail section of the (Adopted) Budget document.

Budget Transfers: Budget transfers shift previously budgeted funds from one line item of expenditure to another. Transfers may occur throughout the course of the fiscal year as needed for County government operations.

Budgeted Agency Savings: A negative account line added to agency budgets due to expected operational savings during the fiscal year similar to budgeted salary lapse.

Glossary

Budgeted Salary Lapse: A budgeted reduction in estimated salary and fringe benefit expenditures due to estimated position vacancy savings anticipated for the fiscal year.

Capital Expenditures: Expenditures incurred for the acquisition or construction of major capital assets (e.g. land, roads, buildings).

Capital Projects Fund: This fund is used to account for financial resources used for the acquisition or construction of major capital facilities (other than those financed by Proprietary Fund Types). The Capital Projects Fund accounts for construction projects including improvements to schools, roads, and other projects.

Catchment: An area served by a hospital, social service agency.

Committed Fund Balance: Amounts that can only be used for specific purposes pursuant to constraints imposed by formal action of the government's highest level of decision-making authority.

Community Outcomes: Key outcomes with targets that demonstrate how the community or individual will benefit or change based on achieving the goal. Community outcomes are adopted by the Board of County Supervisors in the Strategic Plan, taken from the biennial community telephone survey results, or developed by agencies based on their mission and goals.

Community Partner: A nonprofit 501(c)(3) organization that provides specific services and has been in existence for at least three years, unless an ad hoc group is formed to address a specific issue and will disband at the end of the project (i.e. one-time funding); has an identifiable Executive Director; and has an identifiable Board of Directors. Community Partners receive County funding through the annual budget process.

Component Unit: An element of the Comprehensive Annual Financial Report (CAFR) that identifies affiliated organizations for which financial activity must be reported separately. For example, the Adult Detention Center and Schools are component units in the Prince William County CAFR.

Comprehensive Annual Financial Report: Annual financial statements comprising the financial report of Prince William County and its component units required by the Code of Virginia in conformity with Generally Accepted Accounting Principles (GAAP).

Comprehensive Plan: State mandated plan that guides the coordinated, adjusted, and harmonious land development that best promotes the health, safety, and general welfare of County citizens. It contains long-range recommendations for land use, transportation systems, community services, historic resources, environmental resources, and other facilities, services, and resources.

Comprehensive Services Act (for At-Risk Youth and Families): The state law governing the funding and provision of services to youth and families who require foster care or special education services, or who are involved with the Juvenile and Domestic Relations Court.

Contingency: Contingency is an amount of funding maintained in the general fund to cover unanticipated expenditures and/or shortfalls in revenues collected. The Board of County Supervisors must authorize any use of the Contingency.

Glossary

Co-op Budget: The state-administered budget for the Public Health District that is comprised of funding from the state, County, and cities of Manassas and Manassas Park, as well as fees for services, federal funding, and private sector grants.

Cost Recovery: A cost recovery budget is charged back to user agencies. When a cost recovery budget is set up, a negative expenditure budget amount is established equal to the positive expenditure budget amount, resulting in a net expenditure budget of zero.

Council of Governments: A regional organization of units of local government in the Washington, D.C. metropolitan area.

Debt: An obligation resulting from the borrowing of money.

Debt Service: Payment of interest and principal amounts on loans to the County such as bonds.

Depreciation: The process of allocating the cost of a capital asset to the periods during which the asset is used.

Directives: Board of County Supervisors' requests, made during Supervisors Time at a Board of County Supervisors meeting, for County staff to provide information and/or take action.

Effectiveness: A measurable relationship of resources required to achieve intended results.

Efficiency: A measurable relationship of resources required to goods and services produced, such as cost per unit of service.

Electronic Monitoring: A system that uses technology and staff supervision to detain persons in their home in lieu of incarceration in a secure facility.

Employee Benefits: Services and opportunities afforded employees because they work for Prince William County. These benefits include medical and dental insurance, health insurance credit program, flexible benefit account program, Virginia Retirement System, 401(a) money purchase plan, 457 deferred compensation plan, supplemental police and fire retirement plan, group life insurance, optional life insurance, long term care insurance, employee assistance program, holiday leave, sick and annual leave, well days, sick leave bank, other leave, credit union, direct deposit, employee advisory committee, and grievance procedure.

Encumbrances: Obligations incurred in the form of purchase orders, contracts, and similar items that will become payable when goods are delivered or services rendered.

Glossary

Enterprise Funds: These funds are used to account for operations (a) that are financed and operated in a manner similar to private business enterprises where the intent of the Board of County Supervisors is that the costs (expenses, including depreciation) of providing goods or services to the general public on a continuing basis be financed or recovered primarily through user charges, or (b) where the Board of County Supervisors has decided that periodic determination of revenues earned, expenses incurred, and/or net income is appropriate for capital maintenance, public policy, management control, accountability, or other purposes. The following are Enterprise Funds: Prince William County Parks, Recreation & Tourism (which provides recreational services), the Prince William County Landfill (which provides solid waste disposal services), and Innovation Park which is County owned land being marketed for re-sale to targeted industries.

Exemption: A grant of immunity from a specific program, policy, or action.

Expenditure: An amount of money disbursed for the purchase of goods and services.

Family Access to Medical Insurance Security: The state's health insurance program for uninsured and underinsured citizens.

Family Assessment and Planning Team: A group of community representatives, including human services professionals and parents, who develop service plans for at-risk youth and families.

Farm-outs: Inmates incarcerated at other local and regional jails because of a lack of bed space at the Adult Detention Center.

Feasibility: Capability of accomplishment or completion.

Five-Year Plan: The County's projected expenditures and revenues for the next five fiscal years beginning with the adopted budget fiscal year. The Board of County Supervisors adopts the Five-Year Plan each year in concert with the adopted budget. The first year of each Five-Year Plan is synonymous with the adopted budget.

Fund: A financial entity to account for money or other resources, such as taxes, charges and fees, established for conducting specified operations for attaining certain objectives, frequently under specific limitations.

Fund Balance: The difference between assets and liabilities in a governmental fund.

Fund Balance Components: The classifications that segregate fund balance by constraints on purposes for which amounts can be spent. There are five classifications: Nonspendable Fund Balance, Restricted Fund Balance, Committed Fund Balance, Assigned Fund Balance, and Unassigned Fund Balance.

Fund Balance Reserve: The sum total of reservations placed against a fund balance for encumbrances, future year designations and other purposes including grants and special projects, non-current receivables, inventory, and debt service reserves.

Fiscal Year: The time frame to which the budget applies. Prince William County's fiscal year begins on July 1 and ends on June 30.

Glossary

General Debt: Principal and interest payments on outstanding debt repaid from the general fund.

General Fund: Fund used to account for all financial transactions and resources except those required to be accounted for in another fund. Revenues are derived primarily from property and other local taxes, state and federal distributions, licenses, permits, charges for services, and interest income. A significant part of the general fund's revenues is transferred to other funds to finance the operations of the County Public Schools and the Regional Adult Detention Center.

General Obligation Bond: A municipal bond secured by the taxing and borrowing power of the municipality issuing it.

Goal: General statements of public policy, purpose, and intent.

Governmental Fund Types: Most of the County's governmental functions are accounted for in Governmental Funds. These funds measure changes in financial position, rather than net income. Governmental fund types include the General Fund, Special Revenue Funds, and the Capital Projects Fund.

Grant: A payment by one entity to another entity, or a foundation to a non-profit organization intended to support a specified function such as health care, housing, street repair, or construction. Governmental units, foundations, nonprofit organizations, and individuals can all award grants and/or be awarded grants.

Homeless Prevention Center: A County owned homeless shelter.

Host Agency: A department or agency that manages the relationship between a community organization and the County to include proposed donation levels and budget, performance measures, and financial reporting; also, a department that supports, through internal services, any of the business application activities in the Department of Information Technology.

Interstate highway 66: Runs across the western end of the County.

Interstate highway 95: Runs across the eastern end of the County.

Institutional Network: A state-of-the-art communications network for County government, police, fire, library, and school facilities.

Internal Service Funds: Funds used to account for goods or services provided by one department or agency to other departments or agencies of the County, or to other governments, on an allocated cost recovery basis. Internal Service Funds have been established for information technology, vehicle maintenance, road construction, and self-insurance.

Invitation for Bid (IFB): A formal invitation document that is released to the public requesting bids for defined goods and services needed by a public body, to be provided in accordance with provisions defined in the IFB. This method of procurement is used when the requirements can be clearly defined, negotiations are not necessary, price is the major determining factor for award selection, and where required by law. An award is made to the responsible bidder submitting the lowest responsive bid.

Glossary

Joint County/School Capital Process Team: Collaboration between Prince William County School Board and Prince William Board of County Supervisors to establish more frequent contact in order to discuss capital needs, enhance efficiency in planning processes, and improve service outcomes to the community. The joint process includes two different groups, the Joint Board Committee for Capital (Committee), made up of three elected members from each Board, and the Joint Staff Work Group for Capital (Work Group). The Committee constitutes the decision-making body and the Work Group is responsible for supporting the Committee's goals and objectives.

Liabilities: Obligations incurred in past or current transactions requiring present or future settlement.

License and Permit Fees: Fees paid by citizens or businesses in exchange for legal permission to engage in specific activities. Examples include building permits and swimming pool licenses.

Line Item: Detailed classification established to budget and account for the purchase of specific goods and services and the receipt of revenues from specific sources; also known as object level.

Line of Duty Act (LODA): The Virginia Retirement System Line of Duty Act is established by Section 9.1-400 of the Virginia Code. LODA provides benefits to public safety first responders and their survivors who lose their life or become disabled in the line of duty.

Local Match: County cash or in-kind resources required to be expended simultaneously with state, federal, other locality, or private sector funding, usually according to a minimum percentage or ratio.

Mandate: A state or federal action that places a requirement on local governments.

Memorandum of Understanding: A written agreement between the County and a community partner specifying the amount and type of County donations provided and the services and outcomes accounted for by the community partner.

Mission Statement: A brief description of the purpose and functions of an agency.

Modified Accrual: Under the modified accrual basis of accounting, revenues are recognized when measurable and available as current assets. Expenditures are generally recognized when the related services or goods are received, and the liability is incurred. All County governmental and fiduciary funds use the modified accrual basis of accounting.

Municipal Separate Storm Sewer System (MS4) Permit: Discharges from municipal separate storm sewer systems are regulated under the Virginia Stormwater Management Act, the Virginia Stormwater Management Program (VSMP) Permit regulations, and the Clean Water Act as point source discharges. Stormwater discharges from Phase I (large and medium) municipal separate storm sewer systems are authorized under individual permits. Under these permits, the MS4 owner/operator must implement a collective series of programs to reduce the discharge of pollutants from the given storm sewer system to the maximum extent practicable in a manner that protects the water quality of nearby streams, rivers, wetlands and bays.

Non-departmental: Budgeted funds not directly associated with, or controlled by, a specific County department.

Glossary

Non-spendable Fund Balance: Amounts that cannot be spent because they are either (a) not in spendable form or (b) legally or contractually required to be maintained intact.

Northern Virginia Family Service: A community-based non-profit human services agency.

Northern Virginia Regional Commission (formerly Northern Virginia Planning District Commission): A regional organization comprised of units of local government in the Northern Virginia area.

Northern Virginia Transportation Authority (NVTA): The Northern Virginia Transportation Authority is a regional governmental entity established to plan, prioritize, and fund regional transportation programs. The NVTA covers Arlington, Fairfax, Loudoun, and Prince William counties and the cities of Alexandria, Fairfax, Falls Church, Manassas, and Manassas Park.

Northern Virginia Transportation Commission (NVTC): A multi-jurisdictional agency representing Arlington, Fairfax, and Loudoun Counties and the Cities of Alexandria, Fairfax, and Falls Church. NVTC provides a policy forum and allocates up to \$200 million in state, regional, and federal transit assistance each year among its member jurisdictions. NVTC also appoints one principal and two alternate members to the Board of Directors of The Washington Metropolitan Area Transit Authority.

Obligation: A future expenditure requirement incurred by voluntary agreement or legal action.

Off-Cycle: A term that characterizes budget adjustments approved by the Board of County Supervisors outside of the annual budget process.

OmniRide Express: Operated by the Potomac and Rappahannock Transportation Commission (PRTC), OmniRide Express provides commuter bus service from eastern Prince William County and the Manassas area to points in Northern Virginia and the District of Columbia.

OmniRide Local: Operated by the Potomac and Rappahannock Transportation Commission (PRTC), OmniRide Local provides local bus service to the communities of Dale City, Dumfries (including Quantico), Manassas/Manassas Park, and Woodbridge/Lake Ridge.

Ordinance: A law or regulation enacted by the Board of County Supervisors.

Outcome Trends: Multi-year trend information for community and program outcome measures.

Output: Unit of goods or services produced by an agency activity.

Performance: Computer software program previously used to prepare the annual budget and manage County government financial activity. This software was replaced by the Ascend financial management system in FY17.

Glossary

Performance Audit: An independent review of a program, activity, function, operation, management system, or procedure of a government to assess whether the government is achieving economy, efficiency, and effectiveness in the employment of available resources. The examination is objective and systematic, generally using structured and professionally adopted methodologies.

Performance Measures: Quantitative characterization of an agency's success in achieving their stated mission.

Personal Property: An item of property other than real estate to include Personal effects, moveable property, goods, and chattel.

Policy: A definite course or method of action selected from among alternatives and in light of given conditions to guide and determine present and future decisions.

Potomac and Rappahannock Transportation Commission (PRTC): A multi-jurisdictional agency representing Prince William, Stafford, and Spotsylvania Counties and the Cities of Manassas, Manassas Park, and Fredericksburg. PRTC provides commuter bus services (OmniRide Express) and local bus services in Prince William County and the Cities of Manassas and Manassas Park (OmniRide Local).

Principles of Sound Financial Management: Guidelines approved by the Board of County Supervisors to foster the County government's financial strength and stability and the achievement of the organization's financial goals.

Proffers: Contributions of land, capital improvements, and funding collected from developers to address the demand for community services created by new development.

Program: One or more related agency activities that work together for a purpose and function for which the County is responsible.

Program Outcomes: Key measures that demonstrate how the community or individual will benefit or change based on achieving the goal, but are more specific to each individual agency and program than community outcomes.

Property Tax Rate: The rate of taxes levied against real or personal property expressed as dollars per \$100 of equalized assessed valuation of the property taxed.

Proprietary Fund Types: Proprietary Funds account for County activities that are similar to private sector businesses. These funds measure net income, financial position, and changes in financial position. Proprietary fund types include enterprise and internal service funds.

Real Property: Land, buildings, and all other permanent improvements on the land.

Resolution: The official position or will of a legislative body.

Glossary

Resource Shift: The transfer of an expenditure budget from one purpose to another. A resource shift is a common and preferred technique for funding budget increases without the allocation of increased outside revenue or County tax support.

Resources: The actual assets of a governmental unit, such as cash, taxes, receivables, land, buildings, estimated revenues applying to the current fiscal year, and bonds authorized and un-issued.

Restricted Fund Balance: Includes amounts that are restricted to specific purposes as follows:

- a. Externally imposed by creditors (such as through debt covenants), grantors, contributors, or laws or regulations of other governments; or
- b. Imposed by law through constitutional provisions or enabling legislation.

Retained Earnings: See Total Net Assets.

Revenue: Income generated by taxes, notes, bonds, investment income, land rental, user charges, and federal and state grants.

Revenue Bonds: A bond issued by a municipality for a specific project that is supported by the revenue from that project.

Risk Management: The practice of identifying potential risks in advance, analyzing them, and taking precautionary steps to reduce and/or curb the risk, and in turn reduce the County's exposure to financial loss.

Seat Management: Personal computer support services including customer service assistance, desktop and laptop desk side services, software refreshment, and equipment disposal.

Self-Insurance Pool: A cash reserve used to provide stable and cost-effective loss funding on a self-insured basis rather than using a private insurance company.

Service Levels: Quantified measures of the goods and services (outputs) produced by agency activities, the relationship of resources required to outputs produced (efficiency) and the degree of excellence characterizing the outputs (service quality).

Service Quality: The measurable degree of excellence with which goods and services are produced or provided, including customer satisfaction.

Special Revenue Funds: Funds used to account for the proceeds of specific revenue sources (other than expendable trusts or major capital projects) that are legally restricted to expenditures for specified purposes. These funds are used to account for volunteer fire and rescue levies, school operations, the Regional Adult Detention Center, and the Office of Housing and Community Development.

Statute: A law enacted by a legislative body.

Glossary

Strategic Plan: A four-year plan adopted by the Board of County Supervisors which establishes a County government mission statement, a limited number of high priority strategic goals, and measurable community outcomes which indicate success in accomplishing these goals.

Tax Base: The part of the economy against which a tax is levied.

Taxes: Mandatory charge levied by a governmental unit for the purpose of financing services performed for the common benefit.

Technology Improvement Plan: That portion of the Capital Improvement Program that is dedicated to the upgrade, replacement, or addition of technology systems that support various programs and activities throughout County agencies. Project examples include, but are not limited to, upgrades to email, replacement of the financial reporting system (Performance to Ascend), and disaster recovery.

Temporary Assistance to Needy Families: A federal and state public assistance program.

Total Net Assets: The difference between assets and liabilities in a proprietary fund. This term has replaced Retained Earnings.

Tracker: Board of County Supervisors, County Executive or Deputy County Executive's request for action by County staff. Progress on the item is tracked by the County Executive's Office until its successful completion.

Transfer: A shift of resources from one program or activity to another.

Trust and Agency Funds: Funds used to account for assets held by the County in a trustee capacity or as an agent for individuals, private organizations, other governments, and/or other funds. The County has established Agency and Expendable Trust Funds to account for library donations, special welfare, and certain other activities. Agency funds are custodial in nature (assets equal liabilities) and do not involve measurement of results of operations. Expendable Trust Funds are accounted for in essentially the same manner as Governmental Funds.

Unassigned Fund Balance: The total fund balance in the general fund in excess of nonspendable, restricted, committed, and assigned fund balance.

User Fees: User fees are charges for services, such as the use of public property and parking, paid by those benefiting from the service.

Virginia Railway Express (VRE): A transportation partnership of the Northern Virginia and Potomac and Rappahannock Transportation Commissions, the Counties of Fairfax, Prince William, Stafford, Spotsylvania, and Arlington and the Cities of Manassas, Manassas Park, Fredericksburg, and Alexandria. VRE provides commuter rail service from the Northern Virginia suburbs to Alexandria, Crystal City, and downtown Washington D.C.

Watershed: A region or area bounded peripherally by water parting and draining ultimately to a particular watercourse or body of water.

Abbreviation

AAA: Triple A Bond rating, the highest possible rating	BOD: Ballot on Demand
AALL: American Association of Law Libraries	BPOL Tax: Business Professional and Occupational License Tax
ACTS: Action in the Community Through Service	BWC: Body-Worn Camera
ADC: Adult Detention Center	CAB: Citizen Advisory Board
Admin: Administrative	CAC: Crisis Assessment Center
ADP: Average Daily Population	CAD: Computer Assisted Dispatch or Computer-Aided Design system (cannot be both simultaneously)
AED: Automatic External Defibrillator	CAFR: Comprehensive Annual Financial Report
AFIS: Automated Fingerprint Identification System	CALEA: Commission on Accreditation for Law Enforcement Agencies
ALS: Advanced Life Support	CCJB: Community Criminal Justice Board
Approp: Appropriated	CDA: Community Development Authorities
APS: Adult Protective Services	CDBG: Community Development Block Grant
ARYFS: At-Risk Youth and Family Services	CFH: Catholics for Housing
ATCC: American Type Culture Collection	CHDO: Community Housing Development Organization
B&A: Budget and Appropriate	CID: Communications & Infrastructure Division
B&G: Buildings and Grounds	CIP: Capital Improvement Program
B&GC: Boys & Girls Club	CISD: Critical Incident Stress Debriefing
BAB: Build America Bonds	CIT: Crisis Intervention Training
BAC: Board Audit Committee	CMAQ: Congestion Mitigation and Air Quality
BARN: Benedictine Aid and Relief to Neighbors	CMP: Cyclical Maintenance Plan
BECC: Benefits, Employment & Child Care	COG: Council of Governments
BEST Lawn: Building Environmentally Sustainable Turf Lawn	COLA: Cost of Living Adjustment
BLS: Basic Life Support	CP&D: Community Preservation & Development
BMP: Best Management Practices	CPA: Comprehensive Plan Amendment
Board: Board of County Supervisors	
BOCS: Board of County Supervisors	

Abbreviation

CPI: Consumer Price Index	EBT: Electronic Benefits Transfer
CPS: Child Protective Services	EDMS: Electronic Document Management System
CSA: Comprehensive Services Act	EEOC: Equal Employment Opportunity Commission
CSB: Community Services Board	EIAP: Early Intervention Alternative Program
CSW: Community Service Work	EM: Electronic Monitoring
CVB: Convention and Visitors Bureau	EMS: Emergency Medical Services
CXO: County Executive	ENR: Environmental and Natural Resources
CY: Calendar Year	ERP: Enterprise Resource Program
DART: Days Away Restricted or Transferred	ESG: Emergency Shelter Grant
DCJS: Department of Criminal Justice Services	ESI: Engineers and Surveyors Institute
DCSM: Design and Construction Standards Manual	ESOL: English for Speakers of Other Languages
DDS: Department of Development Services	F&R: Fire and Rescue
DEQ: Department of Environmental Quality	FAMIS: Family Access to Medical Insurance Security
DFR: Department of Fire and Rescue	FAPT: Family Assessment and Planning Team
DMAS: Department of Medical Assistance Services	FCC: Federal Communications Commission
DMV: Department of Motor Vehicles	FCM: Facilities Construction Management
DoIT: Department of Information Technology	FICA: Federal Insurance Contributions Act
DOJ: Department of Justice	FirstNet: First Responder Network Authority
DORM: Drug Offender Rehabilitation Module	FOIA: Freedom of Information Act
DOT: Department of Transportation	FRA: Fire and Rescue Association
DPRT: Department of Parks, Recreation and Tourism	FRS: Fire and Rescue System
DSS: Department of Social Services	FSS: Family Self-Sufficiency
E-911: Emergency 911	FTE: Full-Time Equivalent
EBDM: Evidence Based Decision Making	FY: Fiscal Year
EBP: Evidenced Based Practices	GAAP: Generally Accepted Accounting Principles

Abbreviation

GASB: Government Accounting Standards Board

GDC: General District Court

GED: General Equivalency Diploma

GFOA: Government Finance Officers Association

GIS: Geographic Information System

GPS: Global Positioning System

GRIT: Gang Response Intervention Team

GSHF: Good Shepherd Housing Foundation

H&CB: Home & Community Based

HAP: Homeownership Assistance Program

HAZMAT: Hazardous Materials

HCMP: Human Capital Management Payroll

HCVP: Housing Choice Voucher Program

HIDTA: High Intensity Drug Trafficking Area

HIPAA: Health Insurance Portability and Accountability Act

HIV: Human Immunodeficiency Virus

HOA: Homeowners Association

HOC2: Home Occupation Certificate – Family Day Home (Child Care)

HOPWA: Housing Opportunities for Persons with AIDS

HOV: High Occupancy Vehicle

HPAC: Hylton Performing Arts Center

HPC: Homeless Prevention Center

HPDF: Housing Preservation and Development Fund

HRIS: Human Resources Information System

HUD: Department of Housing and Urban Development

HVAC: Heating, Ventilation and Air Conditioning

ICMA: International City/County Management Association

ICT: Intensive Community Treatment

ID: Intellectual Disability

IDA: Industrial Development Authority

IEC: Independence Empowerment Center

IEP: Individualized Educational Plan

IFB: Invitation for Bid

IFSP: Individualized Family Service Plan

I-Net: Institutional Network

IPE: Intervention, Prevention and Education

IRM: Information Resource Management

ISF: Internal Service Fund

ISN: Information Systems Network

IT: Information Technology

IVR: Interactive Voice Response

JARC: Joint Admissions Review Committee

JCSU: Juvenile Court Service Unit

JDC: Juvenile Detention Center

JDRC: Juvenile and Domestic Relations Court

JJAT: Juvenile Justice Action Team

JJPP: Juvenile Justice Parenting Program

Abbreviation

KPWB: Keep Prince William Beautiful	NCIC: National Crime Information Center
LAN: Local Area Network	NCR: National Capital Region
LCI: Local Composite Index	NFPA: National Fire Protection Association
LEOS: Law Enforcement Officers' Supplement	NG911: Next Generation 911
LEPC: Local Emergency Planning Commission	NR: Not Reported
LGBTQ: Lesbian, Gay, Bisexual, Transgender, Questioning	NVCC: Northern Virginia Community College
LIS: Land Information System	NVFS: Northern Virginia Family Service
LMS: Learning Management System	NVRC: Northern Virginia Regional Commission
LNSS: Library Network Support Services	NVTA: Northern Virginia Transportation Authority
LODA: Line of Duty Act	NVTC: Northern Virginia Transportation Commission
LSNV: Legal Services of Northern Virginia	OCJS: Office of Criminal Justice Services
LVA-PW: Literacy Volunteers of America – Prince William, Inc.	OEM: Office of Executive Management
MAT: Medication Assisted Treatment	OHCD: Office of Housing and Community Development
MDC: Mobile Data Computer	OMB: Office of Management & Budget
MDT: Mobile Data Terminal	OMD: Operation Medical Director
MH: Mental Health	OPEB: Other Post-Employment Benefits
MHz: Megahertz	OSHA: Occupational Safety and Health Administration.
MIS: Management Information System	OT: Office of Tourism
MOU: Memorandum of Understanding	OWL: Occoquan-Woodbridge-Lorton (Volunteer Fire Department)
MPTC: Multi-Purpose Transit Center	PAF: Personnel Action Form
MS4: Municipal Separate Storm Sewer System	PATH: Projects for Assistance in Transitioning the Homeless
NA: Not Available	PCE: Property Code Enforcement
NACO: National Association of Counties	PCN: Position Control Number
NADA: National Automobile Dealers Association	

Abbreviation

PCP: Position Classification Plan	SERVE: Securing Emergency Resources through Volunteer Efforts
PHNST: Potomac Heritage National Scenic Trail	SF: Square Feet
PMAH: Project Mend-A-House	SMI/SED: Seriously Mentally Ill/Seriously Emotionally Disturbed
PPTRA: Personal Property Tax Relief Act	SNAP: Supplemental Nutrition Assistance Program
Prop: Property	SRO: School Resource Officer
PRTC: Potomac and Rappahannock Transportation Commission	STD: Sexually Transmitted Disease
PSAP: Public Safety Answering Point	STEP: Systematic Training for Effective Parenting
PSCC: Public Safety Communications Center	STI: Sexually Transmitted Infection
PSFM: Principles of Sound Financial Management	SUP: Special Use Permit
PSSF: Promoting Safe and Stable Families	SWM: Storm Water Management
PSTC: Public Safety Training Center	TANF: Temporary Assistance to Needy Families
PWC: Prince William County	TB: Tuberculosis
PWHD: Prince William Health District	TBD: To Be Determined
PWSI: Prince William Soccer, Inc.	TIP: Technology Improvement Plan
PWSIG: Prince William Self-Insurance Group	TMDL: Total Maximum Daily Load
QC: Quality Control	TRIP: Transportation and Roadway Improvement Program
QSCB: Qualified School Construction Bonds	UOSA: Upper Occoquan Service Authority
REZ: A formal rezoning action pertaining to land use	USDA: United States Department of Agriculture
RFP: Request for Proposal	USPS: United States Postal Service
RMS: Records Management System	VaCMS: Virginia Case Management System
SA: Substance Abuse	VACO: Virginia Association of Counties
SAC: School Age Care	VCE: Virginia Cooperative Extension
SAVAS: Sexual Assault Victims Advocacy Service	VCIN: Virginia Criminal Information Network
SCBA: Self-Contained Breathing Apparatus	VDH: Virginia Department of Health

Abbreviation

VDOT: Virginia Department of Transportation

VFD: Volunteer Fire Department

VIEW: Virginia Initiative for Employment not Welfare

VLEPSC: Virginia Law Enforcement Professional Standards Commission

VMT: Vehicle Miles Traveled

VPRAI: Virginia Pre-trial Risk Assessment Instrument

VPW: Volunteer Prince William

VRE: Virginia Railway Express

VRS: Virginia Retirement System

WFGA: When Families Get Angry

WIC: Women, Infants, and Children

WMATA: Washington Metropolitan Area Transit Authority

YAS: Young Adult Services

ZTA: Zoning Text Amendment

Index

A

Adult Detention Center	268
All Funds Expenditure Budget.....	33
Appendix.....	497
Area Agency on Aging.....	214

B

Board of County Supervisors.....	160
Bond Rating	406
Budget Development	15
Budget Highlights	6
Budget Process	15
Budget Development Process Calendar.....	24
Five Year Plan	16

C

Capital Improvement Program (CIP).....	416
Debt Service Impacts.....	433
Functional Area Summary.....	429
General Debt and Cash Investment by Project Category	405
Operating Impacts	432
Proffer Integration	431
Circuit Court Judges	278
Clerk of the Circuit Court	282
Commonwealth's Attorney	288
Community Development.....	75
Community Partners	367
Funding Provided	371
In-Kind Donations.....	377
Community Services.....	221
Compensation	65
County Attorney.....	164
Courts	
Circuit Court Judges	278
Clerk of the Circuit Court.....	282
General District Court	312
Juvenile & Domestic Relations Court.....	315
Juvenile Court Service Unit	318
Criminal Justice Services.....	294

D

Debt Services	405
Existing Debt Service on County Project.....	411
Funded Projects in the CIP	405
Management Policy Statement.....	407
New Debt by Project	405
Development Services	76

E

Economic Development.....	82
Education, PWC Public Schools.....	349
Elections.....	168
Executive Management.....	173
Expenditures	55
All Funds	55
General Fund	56
Expenditure Summary	56

F

Finance.....	180
Fire & Rescue	299
Five Year Plan	6
FTE Position Summary.....	41

G

General District Court.....	312
General Fund	
Expenditures.....	56
Revenue and Resource Summary.....	52
General Government.....	159
Glossary	510

H

Housing & Community Development	233
Human Resources	191
Human Rights	197
Human Services	213

I

Information Technology.....	201
-----------------------------	-----

Index

J

Juvenile & Domestic Relations Court.....	315
Juvenile Court Service Unit.....	318

L

Library.....	89
--------------	----

M

Magistrate	323
Management & Budget.....	209

N

Non-Departmental.....	359
-----------------------	-----

O

Operating Impacts of the CIP.....	432
Organization Chart (countywide).....	1

P

Parks, Recreation & Tourism.....	97
Planning	107
Police.....	325
Position Summary.....	41
Potomac & Rappahannock Transportation Commission (PRTC).....	133
Proffer Integration in the CIP.....	431
Public Health.....	239
Public Safety	267
Public Safety Communications.....	336
Public Works	115

R

Revenue	
General Fund Revenue & Resource Summary	43

S

Sheriff's Office	341
Social Services.....	247
Strategic Planning in PWC	17

T

Transient Occupancy Tax.....	362
Transit	133
Transmittal Letter.....	3
Transportation	151

U

Users Guide: Agency Page Information	69
--	----

V

Virginia Cooperative Extension.....	259
-------------------------------------	-----