



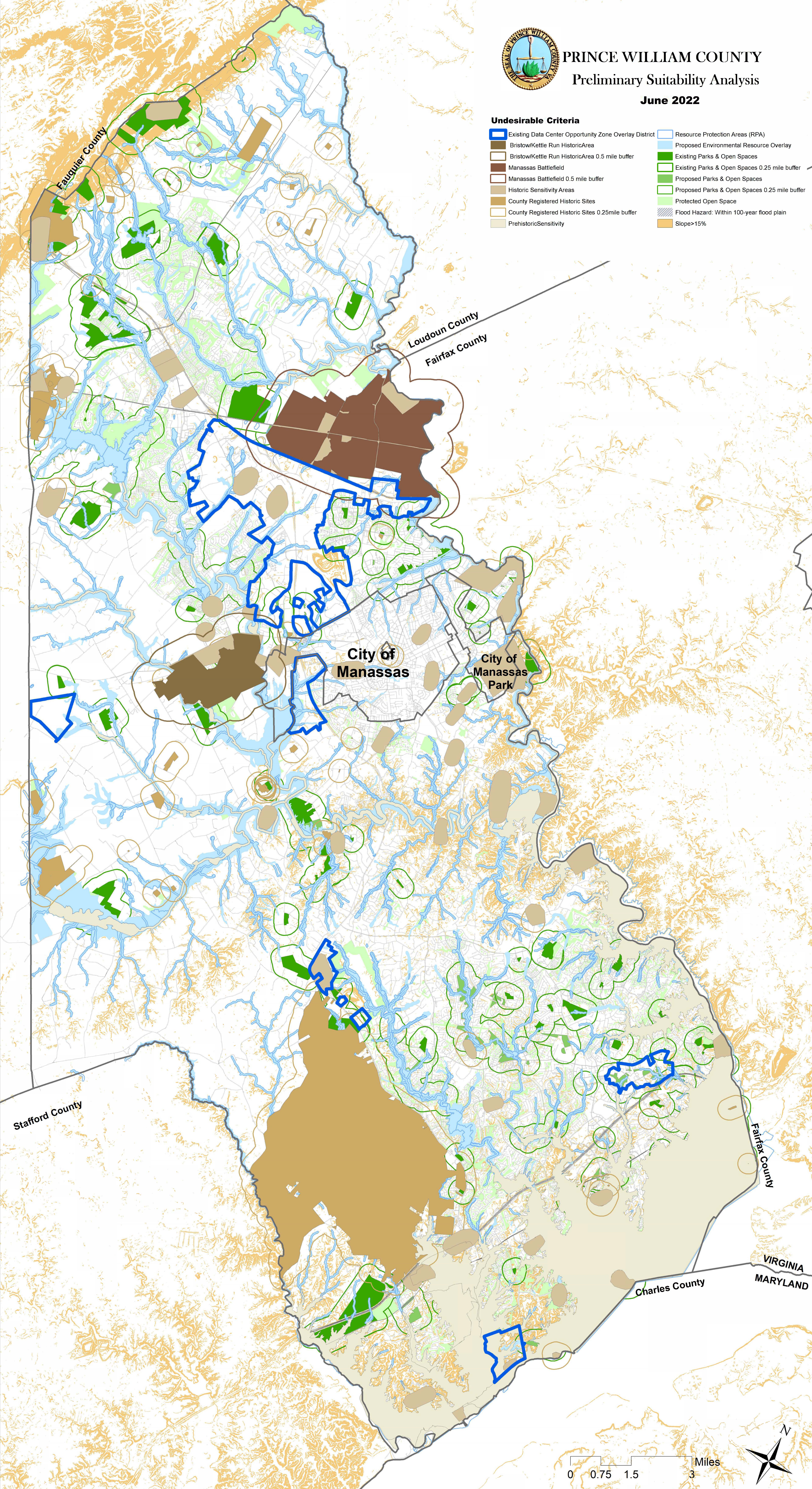
# PRINCE WILLIAM COUNTY

## Preliminary Suitability Analysis

June 2022

### Undesirable Criteria

- |  |   |
|--|---|
| Existing Data Center Opportunity Zone Overlay District | Resource Protection Areas (RPA)               |
| Bristow/Kettle Run Historic Area                       | Proposed Environmental Resource Overlay       |
| Bristow/Kettle Run Historic Area 0.5 mile buffer       | Existing Parks & Open Spaces                  |
| Manassas Battlefield                                   | Existing Parks & Open Spaces 0.25 mile buffer |
| Manassas Battlefield 0.5 mile buffer                   | Proposed Parks & Open Spaces                  |
| Historic Sensitivity Areas                             | Proposed Parks & Open Spaces 0.25 mile buffer |
| County Registered Historic Sites                       | Protected Open Space                          |
| County Registered Historic Sites 0.25 mile buffer      | Flood Hazard: Within 100-year flood plain     |
| Prehistoric Sensitivity                                | Slope > 15%                                   |



0 0.75 1.5 3 Miles

