

Prince William County Demographic Fact Sheet

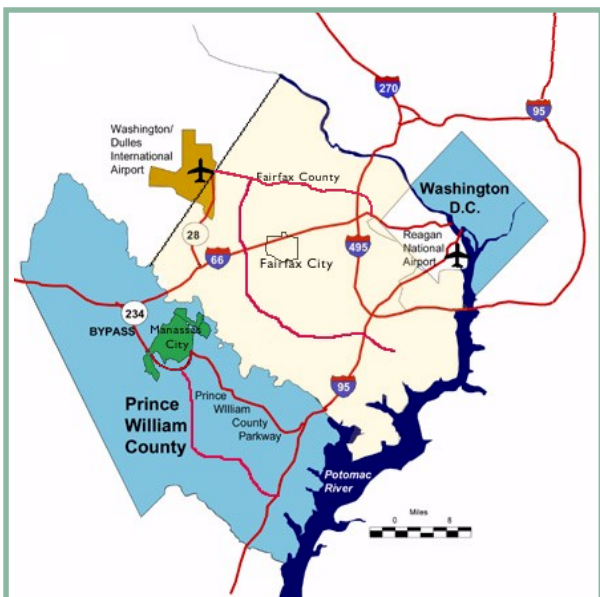
Third Quarter 2005

September 15, 2005

OVERVIEW

Prince William County is located in Northern Virginia approximately 35 miles southwest of Washington, DC. It is bounded on the north by Fairfax and Loudoun Counties, on the east by the Potomac River (Maryland), on the south by Stafford County and on the west by Fauquier County.

Prince William County encompasses a **total area of 348 square miles** (222,615 acres) and a **total land area of 338 square miles**. Prince William County includes within its boundaries the independent cities of Manassas and Manassas Park. The combined area of Prince William County and the independent cities is 360 square miles (230,594 acres). Federal land accounts for approximately 41,600 acres or 18.7% of the total area, and includes Quantico Marine Corps Base, Manassas National Battlefield Park, Prince William Forest Park, Occoquan Bay National Wildlife Refuge, and Featherstone National Wildlife Refuge. Prince William County includes four incorporated towns and fourteen census designated places (CDPs), that is, unincorporated population centers designated by the U.S. Census Bureau for data collection purposes.



POPULATION

According to Census 2000, the population of Prince William County was **280,813 persons** as of April 1, 2000. This equates to a population density of approximately **831 persons per square mile** of land area. Between 1990 and 2000, the population of the County increased by 65,127 persons (30.2%). Even though this represents relatively rapid growth, it is not as fast as in some previous decades.

Prince William County Population 1950-2000

Year	Population	Growth Over Previous Decade (number)	Growth Over Previous Decade (percent)
1950	22,612	4,874	27.5%
1960	50,164	27,552	121.8%
1970	111,102	60,938	121.5%
1980	144,703	33,601	30.2%
1990	215,686	70,983	49.1%
2000	280,813	65,127	30.2%

Source: U.S. Department of Commerce, Bureau of the Census, *Census 1950 - Census 2000*.

Population of PWC, Cities, and Incorporated Towns April 1, 2000

Prince William County	280,813
Manassas City	35,135
Manassas Park City	10,290
Town of Dumfries	4,937
Town of Haymarket	879
Town of Quantico	561
Town of Occoquan	759

Source: U.S. Department of Commerce, Bureau of the Census, *Census 2000*.
 Note: The population of Prince William County includes the towns of Dumfries, Haymarket, Quantico, and Occoquan, but does not include the independent Cities of Manassas and Manassas Park.

POPULATION (Continued)

Census Designated Places, or CDPs, are unincorporated population centers that are designated by the Census Bureau for data collection purposes. There are fourteen CDPs in Prince William County. Most of these population centers showed population increases during the 1990's:

**Population of Places
1990 and 2000**

Place	1990 Population	2000 Population	Change
Bull Run	5,525	11,337	105.2%
Dale City	47,170	55,971	18.7%
Gainesville*	1,776	4,382	146.7%
Lake Ridge**	26,220	30,404	16.0%
Linton Hall*	1,149	8,620	650.2%
Loch Lomond	3,292	3,411	3.6%
Montclair	11,399	15,728	38.0%
Nokesville*	1,309	1,236	-5.6%
Quantico Station	7,425	6,571	-11.5%
Sudley	7,321	7,719	5.4%
Triangle	4,740	5,500	16.0%
West Gate	6,565	7,493	14.1%
Woodbridge	26,401	31,941	21.0%
Yorkshire	5,699	6,732	18.1%

Sources: U.S. Department of Commerce, Bureau of the Census, *1990 Census of Population and Housing, STF 1A; Census 2000.*

* Gainesville, Linton Hall, and Nokesville did not exist as CDPs in 1990. The 1990 population of these places is given according to how they were defined for the 2000 Census.

** The Lake Ridge CDP was a smaller area in 1990 than in 2000. The 1990 population of Lake Ridge is given according to how it was defined for the 2000 Census.

For more information, including maps showing detailed demographic information for specific areas of the County, visit the demographics pages on the PWC web site at <http://www.pwcgov.org/demographics>.

According to the 2000 Census, Prince William County is the third most populous jurisdiction in Virginia, behind Fairfax County and the City of Virginia Beach. Nearly 4% of Virginia's total population is located in Prince William County. More than 65,000 people were added to the County's population during the 1990's, once again ranking it third in Virginia (behind Fairfax and Loudoun Counties) for most population added during that time period.

POPULATION (Continued)

**Population for 10 Largest Jurisdictions in Virginia:
1990 and 2000**

Rank	Jurisdiction	2000 Population	1990 Population	Change (number)	Change (percent)
1	Fairfax County	969,749	818,584	151,165	18.5%
2	Virginia Beach City	425,257	393,069	32,188	8.2%
3	Prince William County	280,813	215,686	65,127	30.2%
4	Henrico County	262,300	217,881	44,419	20.4%
5	Chesterfield County	259,903	209,274	50,629	24.2%
6	Norfolk City	234,403	261,229	-26,826	-10.3%
7	Chesapeake City	199,184	151,976	47,208	31.1%
8	Richmond City	197,790	203,056	-5,266	-2.6%
9	Arlington County	189,453	170,936	18,517	10.8%
10	Newport News City	180,150	170,045	10,105	5.9%

Source: U.S. Department of Commerce, Bureau of the Census, *Census 2000.*

POPULATION ESTIMATES AND FORECASTS

The current estimated population of Prince William County is **359,042 persons** (as of September 15, 2005), which is approximately **1,062 persons per square mile** of land area. The County population has **grown by 78,229 persons (27.9%)** since 2000 when the population was 280,813 persons. The average annual increase since 2000 is approximately 14,332 persons and the average annual growth rate is **4.50%**. This rate is calculated using a formula that accounts for the continuous compounding of the population as it grows. The County is projected to grow to 536,994 persons by 2030.

1990 Population (actual)	215,686
2000 Population (actual)	280,813
September 15, 2005 population (estimate)	359,042
2010 population (forecast)	416,783
2015 population (forecast)	463,198
2020 population (forecast)	489,349
2025 population (forecast)	516,173
2030 population (forecast)	536,994

Sources:

1990 and 2000 figures: U.S. Department of Commerce, Bureau of the Census, *1990 Census of Population and Housing* and *Census 2000*.
2005 estimate: Prince William County Office of Information Technology.
2010-2030 forecasts: Prince William County Round 7.0 Version III
Forecasts, July 2005.

RACE AND ETHNICITY

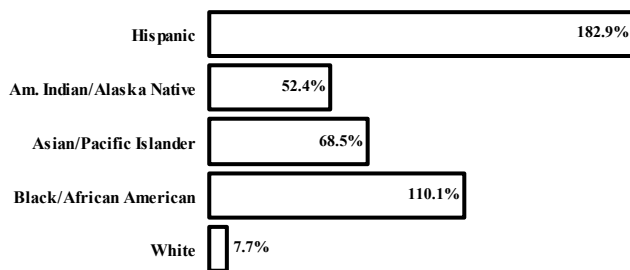
Results from the Census Bureau's 2004 American Community Survey indicated that 69.4% of the County's population was white, 18.5% was African American, 6.3% was Asian or Pacific Islander, 2.7% were of other races, and 2.7% were of two or more races. Approximately 16.5% of the population was of Hispanic Origin (any race).

	1990 % of Total	2000 % of Total	2004 % of Total
RACE			
Reporting One Race			
White	83.3%	68.9%	69.4%
Black / African American	11.6%	18.8%	18.5%
Am. Indian / Alaska Native	0.3%	0.4%	0.5%
Asian / Pacific Islander	3.0%	3.9%	6.3%
Other	1.7%	4.3%	2.7%
Reporting Two or More Races	N/A	3.6%	2.7%
ETHNICITY			
Hispanic Origin (any race)	4.5%	9.7%	16.5%
Non-Hispanic Origin (any race)	95.5%	90.3%	83.5%

Sources: U.S. Department of Commerce, Bureau of the Census, 1990 Census of Population and Housing, STF 1A; Census 2000 Summary File 1; 2004 American Community Survey.

In recent decades, the population of Prince William County has become increasingly racially and ethnically diverse. Between 1990 and 2000, the population of African Americans in the County more than doubled (from 25,078 persons to 52,691 persons) and the population of persons of Hispanic Origin nearly tripled (from 9,662 persons to 27,338 persons).

**Population by Race and Ethnicity
Percent Change 1990 - 2000**



Sources: U.S. Department of Commerce, Bureau of the Census, 1990 Census of Population and Housing, STF 1A; Census 2000.

For more information, including maps showing detailed demographic information for specific areas of the County, visit the demographics pages on the PWC web site at <http://www.pwcgov.org/demographics>.

NATIVITY, PLACE OF BIRTH, AND LANGUAGE

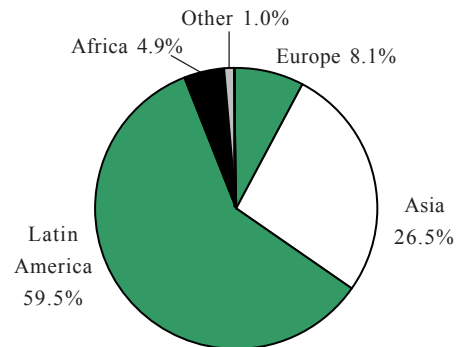
The percentage of the County's population that was born outside of the U.S. rose significantly during the 1990's and continues to rise significantly in the 2000's. The 2004 American Community Survey indicated that 17.6% of Prince William County's population was foreign-born in 2004, compared to 6.2% of the population in 1990. As can be seen in the pie chart below, the largest proportion of foreign-born residents is from Latin America.

Birth Place and Citizenship 2004

Native to U.S.	82.4%
Foreign born	17.6%
Naturalized citizen	6.7%
Not a citizen	10.9%

Source: U.S. Department of Commerce, Bureau of the Census, 2004 American Community Survey.

**Region of Birth of PWC
Foreign Born Population, 2004**



Source: U.S. Department of Commerce, Bureau of the Census, 2004 American Community Survey.

The 2004 American Community Survey revealed that 28.6% of Prince William County's population speaks a language other than English at home. This figure has risen significantly from 9.0% in 1990 and 16.3% in 2000. Furthermore, in 2004, 12.2% of the population indicated that they speak English less than "very well." This figure has increased significantly from 3.1% in 1990 and 6.7% in 2000.

**Language Spoken at Home, 2004
Ages 5 years and older**

English	71.4%
Spanish	17.2%
Other Indo-European languages	4.8%
Asian/Pacific Island languages	4.7%
Other	2.0%

Source: U.S. Department of Commerce, Bureau of the Census, 2004 American Community Survey.

AGE AND GENDER

According to the Census Bureau's 2004 American Community Survey, **29.7%** of the total County population is under 18 years of age. Approximately **5.5%** is aged 65 and over. The median age of the population is **32.0 years**. Reflecting similar nationwide trends, Prince William County's population has aged slightly over the last decade. In 1990, the County's median age was 29.1 years.

Age Group	1990 Percent of Total Pop.	2000 Percent of Total Pop.	2004 Percent of Total Pop.
Under 18 years	30.5%	30.4%	29.7%
18-64 years	66.4%	64.8%	64.8%
65 years and over	3.0%	4.8%	5.5%

Sources: U.S. Department of Commerce, Bureau of the Census, *1990 Census, Census 2000, and 2004 American Community Survey.*

The 2004 American Community Survey also indicated that **49.5%** of the County's population is male and **50.5%** is female.

HOUSING

The 2000 Census found that Prince William County had **98,052 housing units** as of April 1, 2000. This is an increase of over 23,000 units (31%) in the past decade.

Year	Housing Units	Growth Over Previous Decade (number)	Growth Over Previous Decade (percent)
1950	5,755	2,325	62.3%
1960	13,207	7,452	129.5%
1970	29,885	16,678	126.3%
1980	46,490	16,605	55.6%
1990	74,759	28,269	60.8%
2000	98,052	23,293	31.2%

Source: U.S. Department of Commerce, Bureau of the Census, *Census 1950 - Census 2000.*

2000 Housing Occupancy and Tenure

Total Housing Units	98,052	100.0%
Occupied housing units	94,570	96.4%
Owner-occupied units	67,787	71.7%
Renter-occupied units	26,783	28.3%

Source: U.S. Department of Commerce, Bureau of the Census, *Census 2000.*

HOUSING (Continued)

As of September 15, 2005, there were an estimated **125,059 housing units** in Prince William County. This represents an additional 27,007 units since April 2000.

Of the total number of housing units in the County, it is estimated that 71,265 (57.0%) are single-family detached; 32,611 (26.1%) are townhouses; and 21,183 (16.9%) are units in multi-family structures.

According to the Census Bureau's 2004 American Community Survey, the median value of owner-occupied housing units in Prince William County was approximately **\$302,316** in 2004.

Median Value of Owner-Occupied Housing Units, 2004

Prince William County	\$302,316
Virginia	\$179,191
United States	\$151,366

Source: U.S. Department of Commerce, Bureau of the Census, *2004 American Community Survey.*

HOUSEHOLD COMPOSITION

As of June 15, 2005, there are an estimated **120,563 households** in Prince William County. According to the Census Bureau's 2004 American Community Survey, more than 77% of the County's households are occupied by families. Approximately 43% of the County's households are family households occupied by parents with their own children under 18 years.

Household Types: 1990, 2000, and 2004

Household Type	1990 (% of total)	2000 (% of total)	2004 (% of total)
Family Households	80.7%	76.9%	77.7%
Family with own children	50.6%	44.2%	43.4%
Married couple with own children	42.6%	34.2%	33.3%
Single female with own children	6.0%	7.5%	8.3%
Single male with own children	1.9%	2.5%	1.8%
Other Family	30.2%	32.8%	34.3%
Non-Family Households	19.3%	23.1%	22.3%

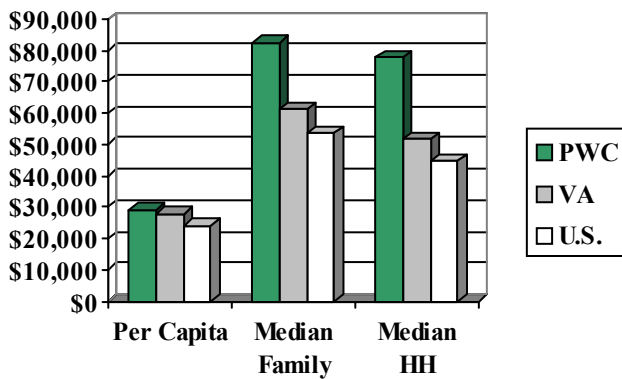
Sources: U.S. Department of Commerce, Bureau of the Census, *1990 Census of Population and Housing, STF 1A; Census 2000; 2004 American Community Survey.*

Prince William County's average household size, according to the Census 2000, is **2.94 persons**, which is down from 3.04 persons per household in 1990.

INCOME AND POVERTY

According to the Census Bureau's 2004 American Community Survey, the 2004 median household income in Prince William County was **\$77,678**. Below is a chart that compares the 2004 per capita income, median family income, and median household income of Prince William County with that of the State of Virginia and the United States.

Per Capita Income, Median Family Income, and Median Household Income Prince William, Virginia, and Nation, 2004



Source: U.S. Department of Commerce, Bureau of the Census, 2004 American Community Survey.

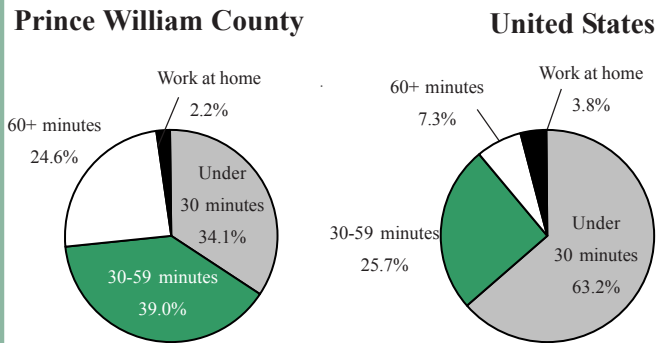
The 2004 American Community Survey reported that Prince William County's **poverty rate was 6.3%** in 2004, which is well below the Virginia rate of 9.5% and the U.S. rate of 13.1%.

For more information, including maps showing detailed demographic information for specific areas of the County, visit the demographics pages on the PWC web site at <http://www.pwcgov.org/demographics>.

JOURNEY TO WORK

Results from the Census Bureau's 2004 American Community Survey indicate that 24.6% of all workers in Prince William County travel 60 or more minutes one way to work. This figure is approximately three times the national average. The 2004 American Community Survey indicated that the average travel time to work for Prince William County commuters **39.4 minutes**. This is up from 36.9 and 36.0 minutes in 2000 and 1990 respectively.

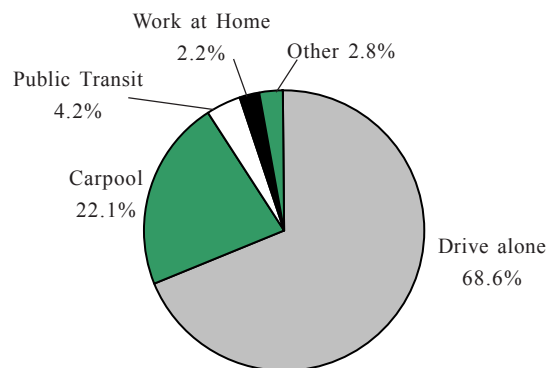
Estimated Travel Time to Work for Workers 16 Years and Over, 2004



Source: U.S. Department of Commerce, Bureau of the Census, 2004 American Community Survey.

The 2004 American Community Survey also indicated that 68.6% of Prince William County's workers drive to work alone. About 22.1% carpool to work, which is up from 18.8% in 2000. About 4.2% use public transportation, which is slightly lower than the national average of 4.6% and slightly higher than the Virginia average of 3.5%.

Prince William County, Virginia Means of Transportation to Work for Workers 16 Years and Over, 2004



Source: U.S. Department of Commerce, Bureau of the Census, 2004 American Community Survey.

EMPLOYMENT

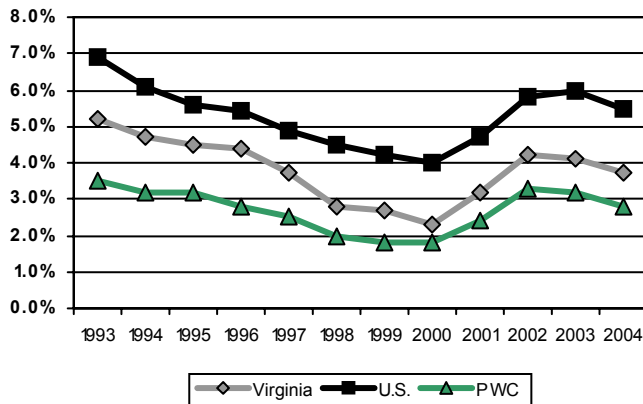
The number of jobs located in Prince William County, or at-place employment, has increased steadily since the early 1990's. There were an average **98,332 jobs in the County** during the fourth quarter of 2004, according to the Virginia Employment Commission.

Year	At-Place Employment (Annual Averages)	Change from Previous Year
1990	55,192	N/A
1991	53,491	-1,701
1992	54,904	1,413
1993	59,372	4,468
1994	63,676	4,304
1995	65,549	1,873
1996	68,030	2,481
1997	69,785	1,755
1998	71,283	1,498
1999	74,673	3,390
2000	78,084	3,411
2001	83,034	4,950
2002	85,907	2,873
2003	88,836	2,929
2004	95,925	7,089

Source: Virginia Employment Commission, ES-202 data, Sept. 15, 2005.

Throughout the past decade, Prince William County unemployment rates have mirrored the State and U.S. rates, however at consistently lower levels. In July 2005, Prince William County had a civilian labor force of 187,926 and an **unemployment rate of 2.6%**.

Unemployment Rates
Prince William, Virginia, and USA
1993 to 2004



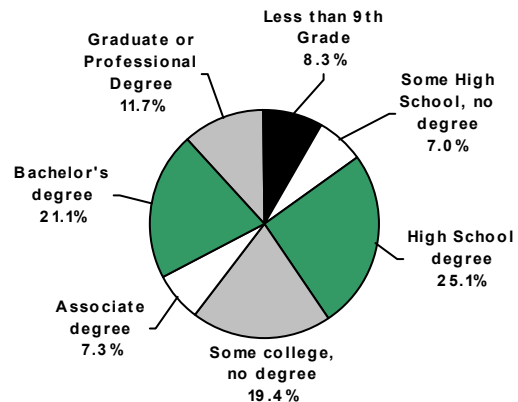
Source: Virginia Employment Commission, LAUS data, Sept. 15, 2005.

EDUCATION

The Prince William County Public School System reported that as of June 22, 2005, there were a **total of 65,930 students** enrolled in public schools in the County. Of those, 31,165 students were enrolled in elementary schools; 15,269 students were enrolled in middle schools; 18,852 students were enrolled in high schools; and 644 students were enrolled in special schools.

According to the Census Bureau's 2004 American Community Survey, **32.8% of adults** in Prince William County had bachelor's degrees or higher, compared to 27.0% in the United States as a whole.

Educational Attainment
in Prince William County, 2004
(Persons 25 years and over)



Source: U.S. Department of Commerce, Bureau of the Census, 2004 American Community Survey.

ADDITIONAL INFORMATION

The information presented in this report is an overview of the data that are available from various data sources to date.

For more information, including maps showing detailed demographic information for specific areas of the County, visit the demographics pages on the PWC web site at <http://www.pwcgov.org/demographics>.