

# Prince William County Demographic Fact Sheet

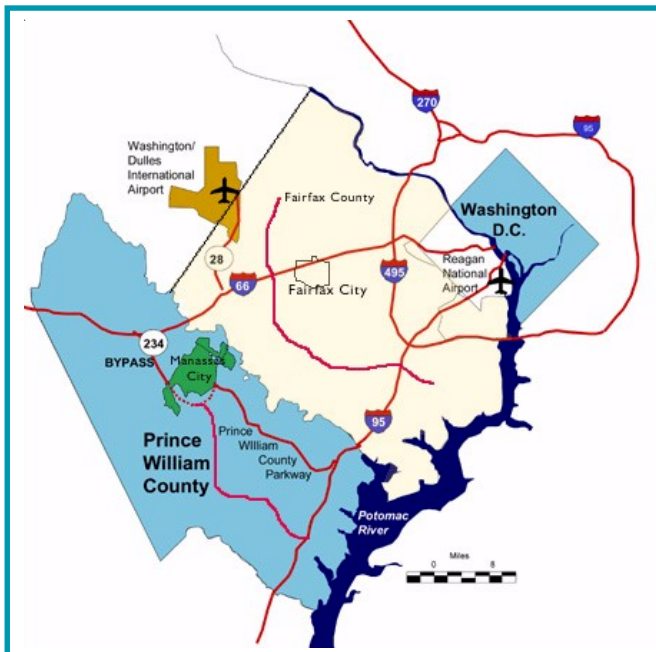
## Second Quarter 2003

June 15, 2003

### OVERVIEW

Prince William County is located in Northern Virginia approximately 35 miles southwest of Washington, DC. It is bounded on the north by Fairfax and Loudoun Counties, on the east by the Potomac River (Maryland), on the south by Stafford County and on the west by Fauquier County.

Prince William County encompasses a **total area of 348 square miles** (222,684 acres) and a **total land area of 338 square miles** (216,269 acres). Prince William County includes within its boundaries the independent cities of Manassas and Manassas Park. The combined area of Prince William County and the independent cities is 360 square miles (230,595 acres). Federal land accounts for 41,671 acres or 18.8% of the total area, and includes Quantico Marine Corps Base, Manassas National Battlefield Park and Prince William Forest Park. Prince William County includes four incorporated towns and fourteen census designated places (CDPs), that is, unincorporated population centers designated by the U.S. Census Bureau for data collection purposes.



### POPULATION

According to Census 2000, the population of Prince William County was **280,813 persons** as of April 1, 2000. This equates to a population density of approximately **831 persons per square mile** of land area. Between 1990 and 2000, the population of the County grew by 30.2%. Even though this represents relatively rapid growth, it is not as fast as in some previous decades.

**Prince William County Population 1950-2000**

Year	Population	Growth Over Previous Decade
1950	22,612	27.5%
1960	50,164	121.8%
1970	111,102	121.5%
1980	144,703	30.2%
1990	215,686	49.1%
2000	280,813	30.2%

Source: U.S. Department of Commerce, Bureau of the Census, *Census 1950 - Census 2000*.

### Population of PWC, Cities, and Incorporated Towns April 1, 2000

Prince William County .....	280,813
Manassas City .....	35,135
Manassas Park City .....	10,290
Town of Dumfries .....	4,937
Town of Haymarket .....	879
Town of Quantico .....	561
Town of Occoquan .....	759

Source: U.S. Department of Commerce, Bureau of the Census, *Census 2000*.  
 Note: The population of Prince William County includes the towns of Dumfries, Haymarket, Quantico, and Occoquan, but does not include the independent Cities of Manassas and Manassas Park.

POPULATION (Continued)

Census Designated Places, or CDPs, are unincorporated population centers that are designated by the Census Bureau for data collection purposes. There are fourteen CDPs in Prince William County. Most of these population centers showed population increases during the 1990's:

Population of Places  
1990 and 2000

Place	1990 Population	2000 Population	Change
Bull Run	5,525	11,337	105.2%
Dale City	47,170	55,971	18.7%
Gainesville*	1,776	4,382	146.7%
Lake Ridge**	26,220	30,404	16.0%
Linton Hall*	1,149	8,620	650.2%
Loch Lomond	3,292	3,411	3.6%
Montclair	11,399	15,728	38.0%
Nokesville*	1,309	1,236	-5.6%
Quantico Station	7,425	6,571	-11.5%
Sudley	7,321	7,719	5.4%
Triangle	4,740	5,500	16.0%
West Gate	6,565	7,493	14.1%
Woodbridge	26,401	31,941	21.0%
Yorkshire	5,699	6,732	18.1%

Sources: U.S. Department of Commerce, Bureau of the Census, *1990 Census of Population and Housing, STF 1A; Census 2000.*

\* Gainesville, Linton Hall, and Nokesville did not exist as CDPs in 1990. The 1990 population of these places is given according to how they were defined for the 2000 Census.

\*\* The Lake Ridge CDP was a smaller area in 1990 than in 2000. The 1990 population of Lake Ridge is given according to how it was defined for the 2000 Census.

For more information, including maps showing detailed demographic information for specific areas of the County, visit the PWC Demographics web site at <http://www.pwcgov.org/demographics>.

According to the 2000 Census, Prince William County is the third most populous jurisdiction in Virginia, behind Fairfax County and the City of Virginia Beach. Nearly 4% of Virginia's total population is located in Prince William County. More than 65,000 people have been added to the County's population in the past decade, once again ranking it third in Virginia (behind Fairfax and Loudoun Counties) for most population added during the 1990's.

POPULATION (Continued)

Population for 10 Largest Jurisdictions in Virginia:  
1990 and 2000

Rank	Jurisdiction	2000 Population	1990 Population	Change (number)	Change (percent)
1	Fairfax County	969,749	818,584	151,165	18.5%
2	Virginia Beach City	425,257	393,069	32,188	8.2%
3	Prince William County	280,813	215,686	65,127	30.2%
4	Henrico County	262,300	217,881	44,419	20.4%
5	Chesterfield County	259,903	209,274	50,629	24.2%
6	Norfolk City	234,403	261,229	-26,826	-10.3%
7	Chesapeake City	199,184	151,976	47,208	31.1%
8	Richmond City	197,790	203,056	-5,266	-2.6%
9	Arlington County	189,453	170,936	18,517	10.8%
10	Newport News City	180,150	170,045	10,105	5.9%

Source: U.S. Department of Commerce, Bureau of the Census, *Census 2000.*

POPULATION ESTIMATES AND FORECASTS

The current estimated population of Prince William County is **321,570 persons** (as of June 15, 2003), which is approximately **951 persons per square mile** of land area. The County population has **grown by 49%** since 1990 when the population was 215,686 persons. The average annual increase since 1990 is approximately 8,016 persons and the average annual growth rate is **3.02%**. This rate is calculated using a formula that accounts for the continuous compounding of the population as it grows. The County is projected to grow to over 400,000 persons by 2020.

1990 Population (actual)	215,686
2000 Population (actual)	280,813
June 15, 2003 population (estimate)	321,570
2005 population (forecast)	328,400
2010 population (forecast)	363,300
2015 population (forecast)	384,300
2020 population (forecast)	400,900
2025 population (forecast)	416,700

Sources: 1990 and 2000 figures: U.S. Department of Commerce, Bureau of the Census, *1990 Census of Population and Housing* and *Census 2000*.  
2003 estimate: Prince William County Office of Information Technology.  
2005-2025 forecasts: Round 6.3 (Staff) Forecasts, Prince William County Staff, March 2002.

**RACE AND ETHNICITY**

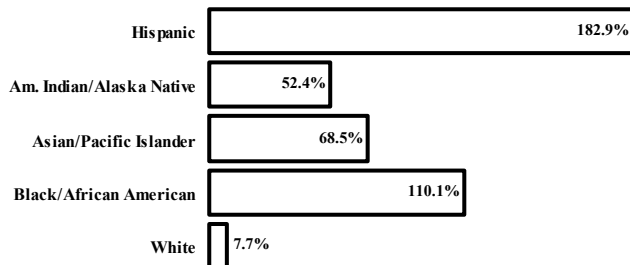
Results from the Census Bureau's 2001 Supplementary Survey indicated that 67.9% of the County's population was white, 19.6% was African American, 4.2% was Asian or Pacific Islander, 4.0% were of other races, and 4.3% were of two or more races. Approximately 11.2% of the population was of Hispanic Origin (any race).

	1990 % of Total	2000 % of Total	2001 % of Total
<b>Reporting One Race</b>			
White	83.3%	68.9%	67.9%
Black / African American	11.6%	18.8%	19.6%
Am. Indian / Alaska Native	0.3%	0.4%	0.1%
Asian / Pacific Islander	3.0%	3.9%	4.2%
Other	1.7%	4.3%	4.0%
<b>Reporting Two or More Races</b>			
	N/A	3.6%	4.3%
<b>Hispanic Origin (any race)</b>			
	4.5%	9.7%	11.2%

Sources: U.S. Department of Commerce, Bureau of the Census, *1990 Census of Population and Housing, STF 1A*; *Census 2000 Summary File 1*; *2001 Supplementary Survey*.

In recent decades, the population of Prince William County has become increasingly racially and ethnically diverse. Between 1990 and 2000, the population of African Americans in the County more than doubled (from 25,078 persons to 52,691 persons) and the population of persons of Hispanic Origin nearly tripled (from 9,662 persons to 27,338 persons).

**Population by Race and Ethnicity  
Percent Change 1990 - 2000**



Sources: U.S. Department of Commerce, Bureau of the Census, *1990 Census of Population and Housing, STF 1A*; *Census 2000*.

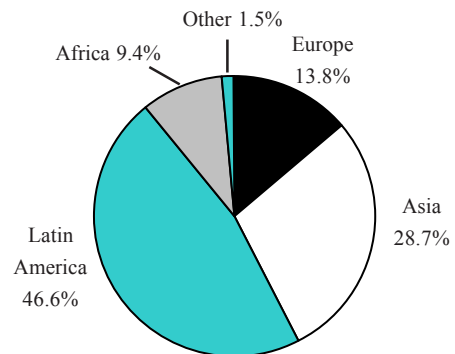
For more information, including maps showing detailed demographic information for specific areas of the County, visit the PWC Demographics web site at <http://www.pwcgov.org/demographics>.

**NATIVITY, PLACE OF BIRTH, AND LANGUAGE**

The percentage of the County's population that was born outside of the U.S. rose significantly during the 1990's. The 2000 Census indicated that **11.5%** of Prince William County's population (32,186 persons) was foreign-born in 2000, compared to 6.2% of the population (13,447 persons) in 1990. As can be seen in the pie chart below, the largest proportion of foreign-born residents is from Latin America.

<b>Total Population</b> .....	<b>280,813</b> .....	<b>100.0%</b>
Native to U.S. ....	248,627 .....	88.5%
Foreign born .....	32,186 .....	11.5%
Naturalized citizen .....	13,391 .....	4.8%
Not a citizen .....	18,795 .....	6.7%

**Region of Birth of PWC  
Foreign Born Population, 2000**



Source: U.S. Department of Commerce, Bureau of the Census, *Census 2000 Summary File 3*.

Census 2000 data revealed that **16.3%** of Prince William County's population speaks a language other than English at home. This figure rose significantly from 9.0% in 1990. Furthermore, **6.7%** of the population indicates that it speaks English less than "very well." This figure has more than doubled from 3.1% in 1990.

**Language Spoken at Home, 2000  
Ages 5 years and older**

English .....	215,173 .....	83.7%
Spanish .....	23,246 .....	9.0%
Other Indo-European languages .....	9,853 .....	3.8%
Asian/Pacific Island languages .....	5,845 .....	2.3%
Other .....	2,921 .....	1.1%

Source: U.S. Department of Commerce, Bureau of the Census, *Census 2000 Summary File 3*.

AGE AND GENDER

According to the 2000 Census, **30.4%** of the total County population is under 18 years of age. Approximately **4.8%** is aged 65 and over. The median age of the population is **31.9 years**. Reflecting similar nationwide trends, Prince William County's population has aged slightly over the last decade. In 1990, the County's median age was 29.1 years.

Census 2000 also indicated that **49.9%** of the County's population is male and **50.1%** is female.

Age Group	1980		1990		2000	
	Population	Percent of Total	Population	Percent of Total	Population	Percent of Total
Under 18 years	52,505	36.3%	65,863	30.5%	85,449	30.4%
18-64 years	88,673	61.3%	143,289	66.4%	181,891	64.8%
Over 65 years	3,525	2.4%	6,534	3.0%	13,473	4.8%

Source: U.S. Department of Commerce, Bureau of the Census, *Census 1980 - Census 2000*.

HOUSING

The 2000 Census found that Prince William County had **98,052 housing units** as of April 1, 2000. This is an increase of over 23,000 units (31%) in the past decade.

Year	Housing Units	Growth Over Previous Decade
1950	5,755	62.3%
1960	13,207	129.5%
1970	29,885	126.3%
1980	46,490	55.6%
1990	74,759	60.8%
2000	98,052	31.2%

Source: U.S. Department of Commerce, Bureau of the Census, *Census 1950 - Census 2000*.

2000 Housing Occupancy and Tenure

**Total Housing Units** ..... **98,052** ..... **100.0%**  
 Occupied housing units ..... 94,570 ..... 96.4%  
 Owner-occupied units ..... 67,787 ..... 71.7%  
 Renter-occupied units ..... 26,783 ..... 28.3%

Source: U.S. Department of Commerce, Bureau of the Census, *Census 2000*.

HOUSING (Continued)

As of June 15, 2003, there were an estimated **111,945 housing units** in Prince William County. This represents an additional 13,893 units since April 2000.

Of the total number of housing units in the County, it is estimated that 62,906 (56.2%) are single-family detached; 30,031 (26.8%) are townhouses; and 19,008 (17.0%) are units in multi-family structures.

According to the Census Bureau's 2001 Supplementary Survey, the median value of owner-occupied housing units in Prince William County was approximately **\$158,198** in 2001.

Median Value of Owner-Occupied Housing Units, 2001

Prince William County ..... \$158,198  
 Virginia ..... \$134,931  
 United States ..... \$127,692

Source: U.S. Department of Commerce, Bureau of the Census, *2001 Supplementary Survey*.

HOUSEHOLD COMPOSITION

As of April 1, 2000, there were 94,570 households in Prince William County. More than 76% of these were family households and more than 44% were households with children under 18 years old living in them.

Prince William County's average household size is **2.94 persons**, which is down from 3.04 persons per household in 1990.

Household Types: 1990 and 2000

Household Type	1990	1990 (% of total)	2000	2000 (% of total)
<b>Total Households</b>	<b>69,709</b>	<b>100.0%</b>	<b>94,570</b>	<b>100.0%</b>
<b>Family Households</b>	<b>56,289</b>	<b>80.7%</b>	<b>72,737</b>	<b>76.9%</b>
Family with children	35,258	50.6%	41,765	44.2%
Married couple with children	29,712	42.6%	32,310	34.2%
Single female with children	4,197	6.0%	7,133	7.5%
<b>Non-Family Households</b>	<b>13,420</b>	<b>19.3%</b>	<b>21,833</b>	<b>23.1%</b>

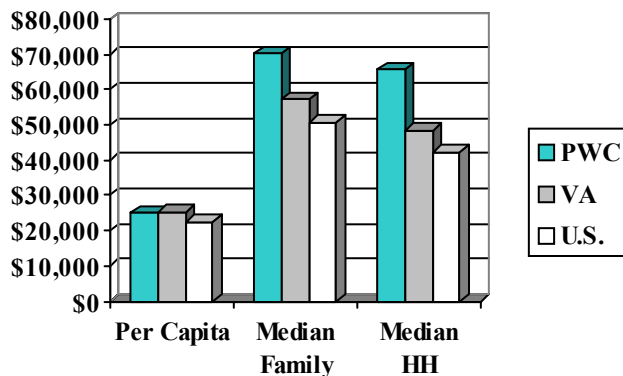
Sources: U.S. Department of Commerce, Bureau of the Census, *1990 Census of Population and Housing, STF 1A; Census 2000*.

As of June 15, 2003, there are an estimated **107,925 households** in Prince William County.

**INCOME AND POVERTY**

According to the Census Bureau's 2001 Supplementary Survey, the 2001 median household income in Prince William County was **\$65,758**. Below is a chart that compares the 2001 per capita income, median family income, and median household income of Prince William County with that of the State of Virginia and the United States.

**Per Capita Income, Median Family Income, and Median Household Income Prince William, Virginia, and Nation, 2001**



Source: U.S. Department of Commerce, Bureau of the Census, 2001 Supplementary Survey.

The 2001 Supplementary Survey reported that Prince William County's **poverty rate was 3.0%** in 2001, which is well below the Virginia rate of 9.3% and the U.S. rate of 12.1%.

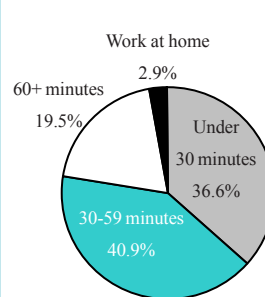
For more information, including maps showing detailed demographic information for specific areas of the County, visit the PWC Demographics web site at <http://www.pwcgov.org/demographics>.

**JOURNEY TO WORK**

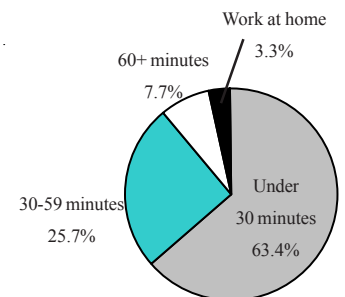
Results from Census 2000 indicate that 19.5% of all workers in Prince William County travel 60 or more minutes one way to work. This figure is more than two and a half times the national average. Census 2000 also indicated that the average travel time to work for Prince William County commuters is **36.9 minutes**. This is up from 36.0 minutes in 1990.

**Estimated Travel Time to Work for Workers 16 Years and Over, 2000**

**Prince William County**



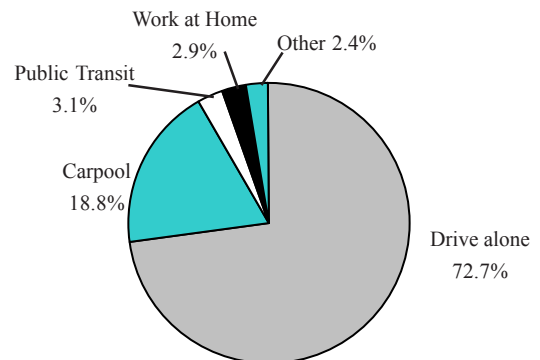
**United States**



Source: U.S. Department of Commerce, Bureau of the Census, *Census 2000 Summary File 3*.

Census 2000 also indicated that nearly 73% of Prince William County's workers drive to work alone. About 18.8% carpool to work, which is down from 22.8% in 1990. About 3.1% use public transportation, which is lower than the national average of 4.7% and the Virginia average of 3.6%.

**Prince William County, Virginia Means of Transportation to Work for Workers 16 Years and Over, 2000**



Source: U.S. Department of Commerce, Bureau of the Census, *Census 2000 Summary File 3*.

EMPLOYMENT

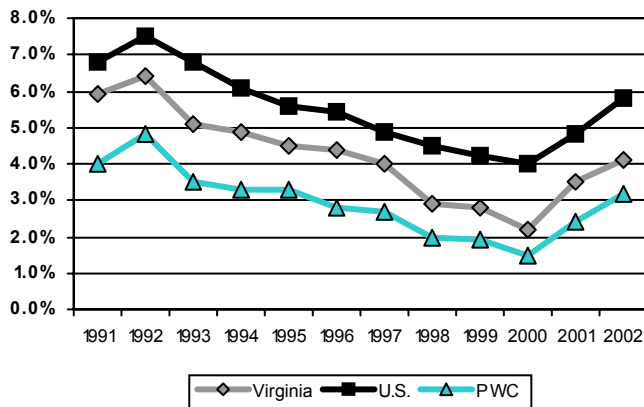
The number of jobs located in Prince William County, or at-place employment, steadily increased throughout the 1990's. There were **86,913 jobs in the County** during the second quarter of 2002, according to the Virginia Employment Commission.

Year	At-Place Employment (Annual Averages)	Change from previous year
1990	55,222	NA
1991	53,491	-1,731
1992	54,904	1,413
1993	59,369	4,465
1994	63,677	4,308
1995	65,559	1,882
1996	68,201	2,642
1997	69,785	1,584
1998	71,283	1,498
1999	74,673	3,390
2000	78,084	3,411
2001	83,037	4,953

Source: Virginia Employment Commission, ES-202 data.

Throughout the past decade, Prince William County unemployment rates have mirrored the State and U.S. rates, however at consistently lower levels. In March 2003, Prince William County had a civilian labor force of 162,456 and an **unemployment rate of 3.7%**.

Unemployment Rates  
Prince William, Virginia, and Nation  
1991-2002



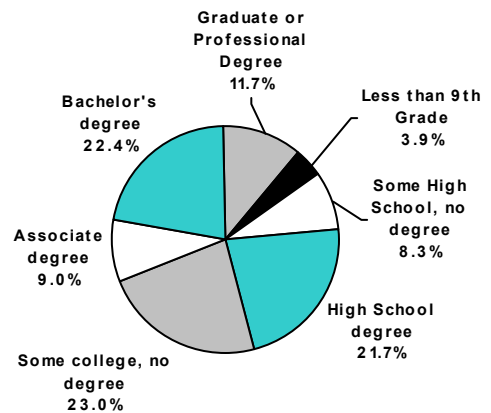
Source: Virginia Employment Commission, LAUS data.

EDUCATION

The Prince William County Public School System reported that as of May 30, 2003, there were a **total of 60,600 students** enrolled in public schools in the County. Of those, 28,866 students were enrolled in elementary schools; 14,238 students were enrolled in middle schools; 16,960 students were enrolled in high schools; and 536 students were enrolled in special schools.

According to the results of Census Bureau's 2001 Supplementary Survey, in 2001, **34.1% of adults** in Prince William County had bachelor's degrees or higher, compared to 25.5% in the United States as a whole.

Educational Attainment  
in Prince William County, 2001  
(Persons 25 years and over)



Source: U.S. Department of Commerce, Bureau of the Census, 2001 Supplementary Survey.

ADDITIONAL INFORMATION

The information presented in this report is an overview of the data that are available from various data sources to date.

For more information, including maps showing detailed demographic information for specific areas of the County, visit the PWC Demographics web site at <http://www.pwcgov.org/demographics>.